

Bowers & Wilkins



**AVAILABLE AT
DIGITAL CINEMA**

C5 Series 2 In-Ear Headphones

Welcome to Bowers & Wilkins C5 Series 2

In-Ear Headphones

Thank you for choosing Bowers & Wilkins. When John Bowers first established our company he did so in the belief that imaginative design, innovative engineering and advanced technology were keys that could unlock the enjoyment of audio. His belief is one that we continue to share and it inspires every product we design.

The C5 Series 2 is a very high quality in-ear headphone that enables the best possible quality audio performance to be achieved on the move. This manual will tell you everything you need to know to get the most from your C5 Series 2 in-ear headphones.

1. C5 Series 2 carton contents

1. C5 Series 2 in-ear headphones
2. Extra-small, medium and large ear tips
3. Storage pouch

2. Fitting your C5 Series 2 in-ear headphones

Fitting your in-ear headphones correctly will help ensure that their performance reaches its full potential. First, identify the left and right headphones. Identification legends are engraved on the body of each one. This is illustrated in Diagram 1.

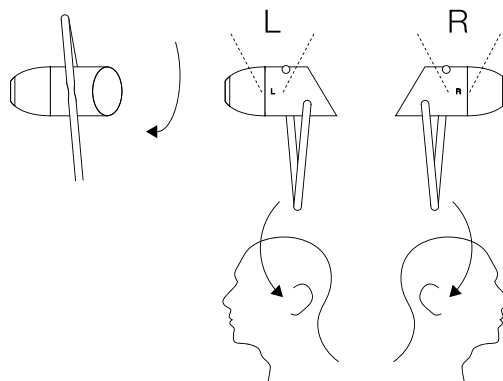


Diagram 1
Left/right identification

2.1 Selecting headphone tips

The performance of your C5 Series 2 headphones will only be realised by using the ear tips that most closely match the size of your ear canals. The headphones are supplied with extra small, small (pre-fitted), medium and large ear tips. Ear tips are removed by gently pulling them away from the headphone body and fitted simply by pushing them in to place. Experiment with the ear tips to find the tightest seal in your ear canals. Diagram 2 illustrates removal and fitting of ear tips.

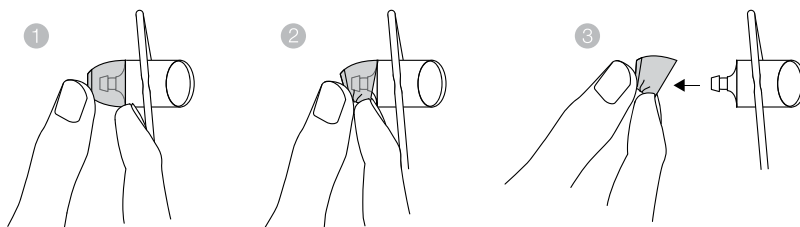


Diagram 2
Removal and replacement of ear tips

2.2 Adjusting the cable loops

Headphone fit can be adjusted by lengthening or shortening the Secure Loop so that it presses against the inner part of the ear to help retain the headphone in place. This is illustrated in Diagram 3.

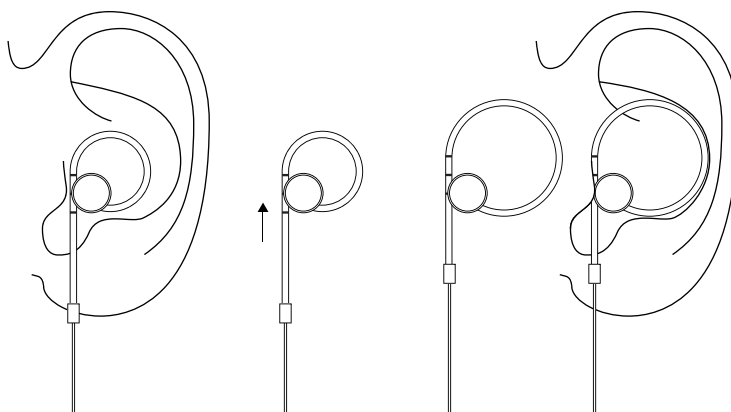


Diagram 3
Using and adjusting the cable loops

2.3 Removing the cable loops

If desired, your C5 Series 2 headphones can be used without the Secure Loop. To remove the loops, slide the stopper down the cable, opening up the end of the sleeve. Then pass the cable through the circular slot on the side of the headphone until the thinner section of cable enables its release. Reverse this procedure to re-establish the loops. Diagram 4 illustrates removal and re-establishment of the Secure Loop design cable loops.

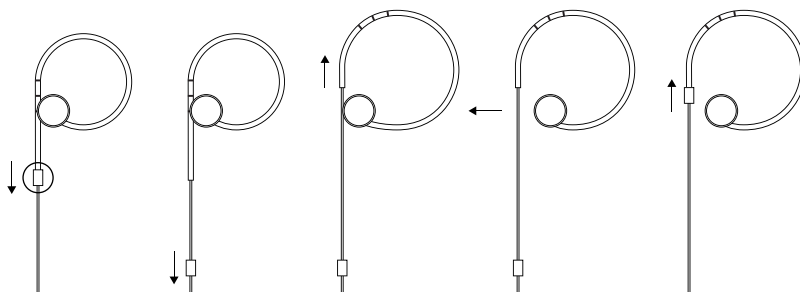


Diagram 4
Removing and replacing the cable loops

3. Using your C5 Series 2 in-ear headphones

Your C5 Series 2 headphones are Made for iPhone and incorporate a combined microphone and audio control, integrated within the connection cable, that enables you to make or answer iPhone calls while wearing the headphones. The control also enables you to play, pause and skip songs. The microphone and control is illustrated in Diagram 5. The control incorporates three click switches, one in the middle and one at either end, and operates as follows:

- Click the end switch engraved "+" to increase phone or song volume.
- Click the end switch engraved "-" to decrease phone or song volume.
- Click the middle switch once to answer a call.
- Click the middle switch a second time to end a call.
- Click the middle switch once to play or pause a song.
- Click the middle switch twice to skip to the next song.
- Click the middle switch three times to skip to the previous song.

Note: Mobile devices other than compatible iPod and iPhone models will not necessarily offer audio control and phone functionality with C5 Series 2 headphones.

4. Cleaning your C5 Series 2 in-ear headphones

Your headphones may require periodic cleaning. Clean only with a dry, soft cotton swab or equivalent. Never insert any cleaning tool into the ear tips.

5. Trouble shooting

No or intermittent audio

- Make sure that the headphone plug is securely connected to the source headphone socket (not a "line out" socket).
- Try an alternative audio source.

Excessive bass

- Disable any audio enhancement features on the audio source.

Integrated control not functioning correctly

- Disconnect and re-connect the headphones to ensure the connection is secure.
- Test on another compatible product if available.

Low volume or poor audio quality

- Try a different sized ear tip – see section 2.1
- Disconnect and re-connect the headphones to ensure the connection is secure.
- Disable any audio enhancement features on the audio source.
- Make sure the headphones are clear of any debris or wax build-up.
- Make sure the volume level of the audio source is turned up.
- Try an alternative audio source.

Sound is only coming from one earpiece

- Disconnect and re-connect the headphones to ensure the connection is secure.
- Try another audio source.
- Make sure the headphones are clear of any debris or wax build-up.

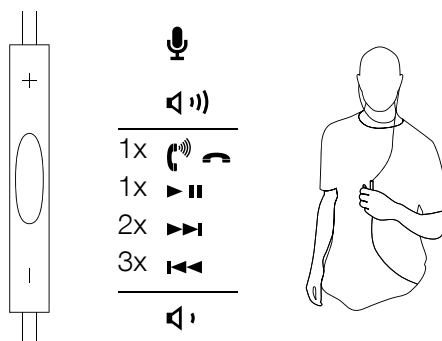


Diagram 5
Using the MFI control

6. Safety warnings

Contains small parts which may be a choking hazard. Not suitable for children under age 3.

- This product contains magnetic material.
- When unplugging the headphones never pull on the cable. Always grasp and pull the connector.
- Long-term exposure to loud music may cause hearing damage. It is best to avoid high volume levels when using headphones, especially for extended periods.
- Use caution when using your headset/headphones while operating a vehicle or engaging in any activity that requires your full attention. Check and follow local laws regarding mobile phone and headset/headphones use. Some jurisdictions impose specific limitations, such as single earpiece configuration, on the use of such products while driving.
- Sounds that you rely on as reminders or warnings may have an unfamiliar character when using headphones. Be aware of how these sounds may vary in character so you can recognise them as needed.
- Do not drop, sit on, or allow the headphones to become wet.

Compatibility

The remote and mic are supported by iPhone 3GS and later, iPod Touch 2nd generation & later, iPad all models. The remote is supported by iPod Classic all models, iPod Nano 4th generation & later, iPod Shuffle 3rd generation & later.

Technical Specifications

Model	C5 Series 2
Description	In-Ear Headphone
Technical features	Secure loop Micro porous filter CCA W coil
Drive units	2x ø9.2mm (0.4in) full range
Impedance	32 ohms
Frequency range	10Hz to 20kHz
Distortion (THD)	<0.2% (1KHz/1mW)
Max. input power	3mW
Sensitivity	115dB/V at 1kHz
Inputs	3.5mm stereo mini jack
Cable length	1.2m
Weight	20g
Apple compatibility	The remote and mic are supported by iPhone 3GS and later, iPod Touch 2nd generation & later, iPad all models. The remote is supported by iPod Classic all models, iPod Nano 4th generation & later, iPod Shuffle 3rd generation & later.

Trademark acknowledgements

Apple, iPad, iPhone, iPod, iPod classic, iPod nano, iPod shuffle, and iPod touch are trademarks of Apple Inc., registered in the U.S. and other countries.