

In-Wall speakers



**AVAILABLE AT
DIGITAL CINEMA**

WARNING: Improper installation of the speaker could result in amplifier damage. Read all instructions before installation.

Jamo[®]
Let's get personal

Placement

Make certain the speaker is located between wall studs to avoid cutting into studs. Place the supplied template a minimum of 5/8" from any studs. Level it and draw a line around it to mark the cutout. Take care when cutting the hole to avoid cutting into pipes or electrical conduits. If you encounter pipes, electrical conduits or other obstacles you may have to select another location for the speaker.

Installation

First install the frame. Loosen screws A (fig. 1) by turning them counter clockwise. Loosen all 4 screws until the „Dog ears“ B (fig. 2) can move freely. Do not remove the screws. Install the frame into the wall and level it (notice TWEETER and WOOFER markings on the frame). Turn screws A clockwise until they are tightened and the frame is firmly installed.

Next install the speaker into the frame. Before installing the speaker connect the speaker wires as described under „Hookup“ and set the impedance switch to the desired position (see „Adjustments“). Remove the grill from the speaker. Place the speaker into the frame and secure with the 6 screws supplied.

Before reinstalling the grill on the speaker make tweeter level adjustments as described under „Adjustments“. Reinstall the grill. If the grill has a loose fit and/or is vibrating when the speaker is playing remove the grill, install the supplied non-curing glue strips at locations C (fig. 1) and reinstall the grill.

Hookup

The receiver/amplifier must be turned OFF before you connect the speaker or it may cause damage to the amplifier.

Connect the speaker wires from the receiver/amplifier to the speakers. When connecting the speaker wires make sure that LEFT (L) is connected to LEFT (L), RIGHT (R) to RIGHT (R), POSITIVE (+) to POSITIVE (+) and NEGATIVE (-) to NEGATIVE (-). If terminals are color coded, RED is POSITIVE (+) and BLACK is NEGATIVE (-).

Adjustments

The tweeter can be tilted towards the listening area, due to high frequencies being more directional than low frequencies. The impedance of the speaker and the level of the tweeter are adjustable.

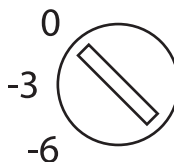
IMPEDANCE:

Located on the crossover on the back. The factory setting is 8 ohm. If the receiver/amplifier specifies a minimum impedance of 4 ohm, the speaker may be switched to the 4 ohm position. This will make the speaker play louder. When installing more than 1 pair of speakers to a receiver/amplifier special care should be taken to impedance matching the speakers to the receiver/amplifier. This may require impedance matching devices. Consult your dealer for information regarding impedance matching.



TWEETER LEVEL:

Located on the front baffle. The factory setting is 0 dB. The level of the tweeter can be lowered by 3 or 6 dB to suite individual tastes in different room environments. Experiment with the settings to find the preferred sound.



Custom painting

The grill and frame may be painted to match your decor. Paint the grill and frame separately before mounting to the wall. After painting the grill blow air through the holes to prevent clogging. The speaker is supplied with a sheet of acoustically transparent foam. This may be inserted behind the grill so the holes look less dark.

Maintenance

All Jamo loudspeakers are made of modern thoroughly tested materials, which will usually require no maintenance, other then dusting or drying with a soft, dry cloth. If the loudspeakers have become greasy, the grease may be removed by moistening the cloth with water and possible using a mild detergent.

NOTE:

Never use any scouring powder, household cleansers or any other solvents for cleaning the loudspeaker.

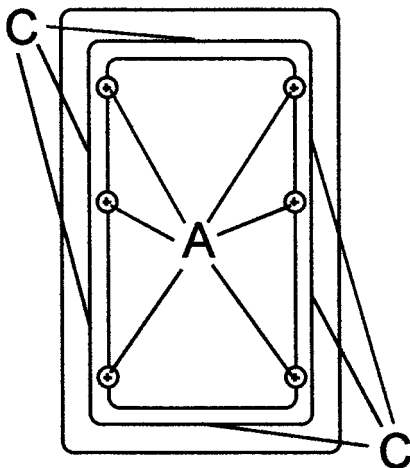


Fig. 1

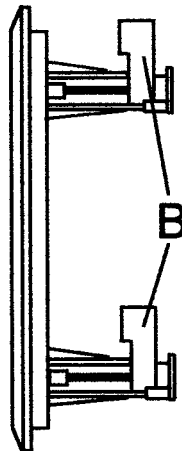


Fig. 2

The scope of the warranty

The warranty period will come into force as from the purchase date stated on the invoice. The warranty will apply for the following period of time:

- 2 years for electronics (power supply, amplifier, etc.)
- 7 years for other parts (cabinet, speaker units, etc.)

In case of warranty inquiries, please contact your dealer.

In case of request for service under warranty, please enclose your original receipt.

Defects covered by the warranty:

Except for the defects stated below, the warranty covers any production and material defects of the product.

Defects not covered by the warranty:

- Defects arising from accidents, misuse, normal wear and tear, mis-maintenance, voltage variation, overloading, stroke of lightning, and other force majeure events
- Defects arising from incorrect installation or operation
- Defects arising from modification/repair/attempt of repair by a non-authorized service centre
- Defects arising from the use of non-original spare parts
- Defects on products with altered or lacking series number
- Other defects due to conditions or circumstances beyond the supplier's control

Transportation costs for servicing are not covered by the warranty.

The supplier is liable only to repair or replace defective parts or products. A replacement cannot exceed the value of the product under warranty.