

# Vanishing™ S E R I E S

---



**AVAILABLE AT  
DIGITAL CINEMA**

## ***LS Models***

*Modèles LS*

*Modelos LS*

***900-LS***

***700-LS***

***500-LS***

## ***RT Models***

*Modèles RT*

*Modelos RT*

***90-RT***

***70-RT***

***50-RT***

**polkaudio®**

the speaker  
specialists®

## ENGLISH

### IMPORTANT SAFETY INSTRUCTIONS READ BEFORE OPERATING EQUIPMENT

1. Read these instructions.
2. Keep these instructions.
3. Heed all warnings.
4. Follow all instructions.
5. Do not use this apparatus near water.
6. Clean only with dry cloth.
7. Do not block any ventilation openings. Install in accordance with the manufacturer's instructions.
8. Do not install near any heat sources such as radiators, heat registers, stoves, or other apparatus (including amplifiers) that produce heat.
9. Refer all servicing to qualified service personnel. Servicing is required when the apparatus has been damaged in any way, liquid has been spilled or objects have fallen into the apparatus, the apparatus has been exposed to rain or moisture, does not operate normally, or has been dropped.
10. **WARNING:** To reduce the risk of fire or electric shock, this apparatus should not be exposed to rain or moisture and objects filled with liquids, such as vases, should not be placed on this apparatus.



**Product Disposal**—Certain international, national and/or local laws and/or regulations may apply regarding the disposal of this product. For further detailed information, please contact the retailer where you purchased this product or the Polk Audio Importer/

Distributor in your country. A listing of Polk Audio Importer/Distributors can be found on the Polk Audio website [www.polkaudio.com](http://www.polkaudio.com) or by contacting Polk Audio at 5601 Metro Drive, Baltimore, Maryland 21215, USA—Phone: +1 410 358-3600.

### WARNING: Listen Carefully

Polk Audio loudspeakers and subwoofers are capable of playing at extremely high volume levels, which could cause serious or permanent hearing damage. Polk Audio, Inc. accepts no liability for hearing loss, bodily injury or property damage resulting from the misuse of its products.

Keep these guidelines in mind and always use your own good judgment when controlling volume:

- You should limit prolonged exposure to volumes that exceed 85 decibels(dB).

For more about safe volume levels, go to the Occupational Health and Safety Administration (OSHA) guidelines at [http://www.osha.gov/dts/osta/otm/noise/standards\\_more.html](http://www.osha.gov/dts/osta/otm/noise/standards_more.html)

### TAKE INVENTORY

Inside each speaker container, you should find the following:

1. One In-Ceiling Loudspeaker
2. One Sheer-Grille™
3. Mounting Template
4. Owner's Manual
5. Registration Card

**Important Note:** If anything is missing or damaged, or if your speaker fails to operate, notify Polk Audio Customer Support Services immediately at 800-377-7655.

### INSTALLATION RECOMMENDATION FOR OPTIMUM PERFORMANCE

**Important Note:** Vanishing Series Loudspeakers are not magnetically shielded and should not be placed closer than 1' (30cm) from a CRT (tube) television or video monitor.

**Important Note:** You should have a thorough understanding of and adhere to all local building and fire codes. Also, you should be familiar with the area behind the wall or ceiling into which you plan to install your speakers. Always use wire that meets appropriate building and fire codes. Wiring is best performed by an experienced professional.

When installing your loudspeakers, be aware of the weight of your particular model and the sturdiness of the material into which you are installing the speakers. Be aware of any concealed studs, electrical wiring or plumbing in the wall or ceiling into which you are installing the speakers.

If you doubt that you possess the necessary skills or tools, consult your Polk Audio dealer or a professional installer.

### WIRE RECOMMENDATIONS

(minimum recommended)

Runs	Gauge
Lengths up to 25'	18 or 16
Lengths greater than 25' but less than 50'	16 or 14
Lengths greater than 50' but less than 75'	14 or 12
Lengths greater than 75'	12

### IMPORTANT INFORMATION BEFORE YOU INSTALL YOUR LOUDSPEAKERS

#### Wall Or Ceiling Surface Preparation

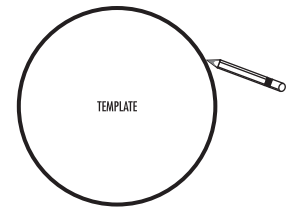
If you're installing your Vanishing Series speaker into a heavily textured wall or ceiling (e.g. stucco or popcorn finish), **you must prepare the wall surface immediately around the speaker cutout.** Sanding and smoothing the wall or ceiling surface will ensure the speaker and grille both seat properly and flat to the surface.

### LOUDSPEAKER INSTALLATION

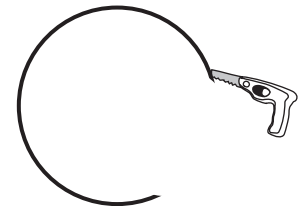
You will need:

- Pencil for marking the location of installation.
- Keyhole saw, utility knife or material-appropriate tool for cutting drywall or other wall material.
- Screwdriver, preferably powered, with Phillips Head bit.
- Power drill with appropriate bit (optional, for starting wall cut).

Trace around the template.

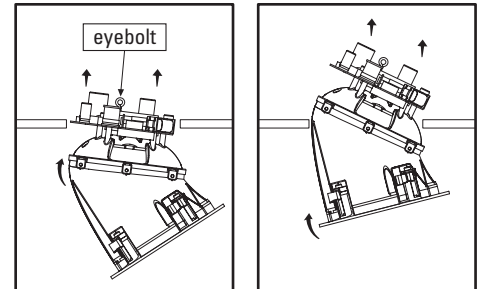


Cut the hole with the appropriate tool.



### CROSSOVER WARNING

Exercise extreme caution when installing this loudspeaker so you do not damage the crossover.



### SECURITY EYEBOLT

Your Vanishing Series in-ceiling loudspeaker has an eyebolt on the back of the speaker that can be used for an extra measure of installation security. Follow standard building code installation procedures in your area.

## IMPORTANT INFORMATION SHOULD YOU CHOOSE TO PAINT YOUR GRILLES

Because of its ultra-thin profile, the Vanishing Series Sheer-Grille™ requires a specific painting procedure to ensure smooth, even coverage.

**Important Note:** Do not remove the grille scrim before painting.

### Paint Recommendation

We highly recommend you use a can of spray paint matched to the ceiling color you want the Sheer-Grilles to blend with.

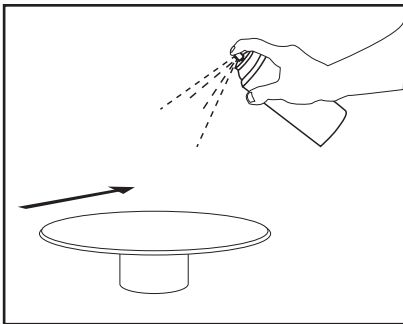
**Important Note:** Never use a brush or roller to paint the grilles, as this will clog the perforated holes.

### To paint the Sheer-Grille

1. Elevate the Sheer-Grille off of a flat surface. This will ensure even coverage of the grille frame and make it easier to pick up.

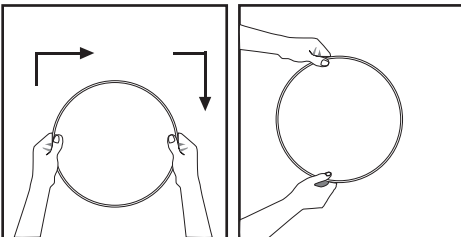
**Mounting Idea:** A single spray can cap will raise the grille high enough.

2. Hold the spray paint about 12" from the grille and at a 45° angle.



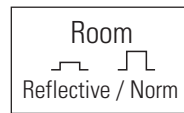
3. Apply one light, thin coat, moving evenly side to side over the grille, then work your way around the perimeter of the grille to ensure you cover the grille frame.
4. After each application of paint, wait approximately 1 minute, rotate the grille 90°, and apply the next thin coat.

**Important Note:** You must rotate the grille 90°. Use your hands to define the next 90° rotation and always rotate the grille in the same direction of travel.



5. Three light, even applications should cover the grille and frame adequately. Remember to work your way around the grille frame to cover it evenly and completely.

## ROOM ENVIRONMENT CONTROLS

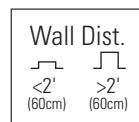


### Room Switch

If your listening room is very reflective, with smooth sheetrock walls, hardwood floors and non-cushioned furniture, the sound will be overly "bright" and unnatural.

Engaging the Room Switch (Reflective) compensates for the effect of reflectivity in a "hard room" by attenuating only the portion of the tweeter response that can cause harshness resulting in listener fatigue. This flattens room response without hindering higher frequency response, for warmer, more realistic sound and more accurate imaging.

If your listening room is not highly reflective, that is it has curtains, carpeting, and cushioned furniture, leave the Room Switch in its Normal setting (Norm).



### Wall Distance Switch (LS models only)

In-ceiling loudspeakers excel when placed more than 2' (60cm) from side walls. If position limitations demand that in-ceiling loudspeakers be installed closer than 2' (60cm) from side walls, the proximity of the surface can result in a response "bump" between 50Hz and 200Hz. This can cause in-ceiling speakers to sound "boomy." The "Wall Distance" switch flattens response and eliminates "boominess" without sacrificing deep bass response, for more lifelike sound.

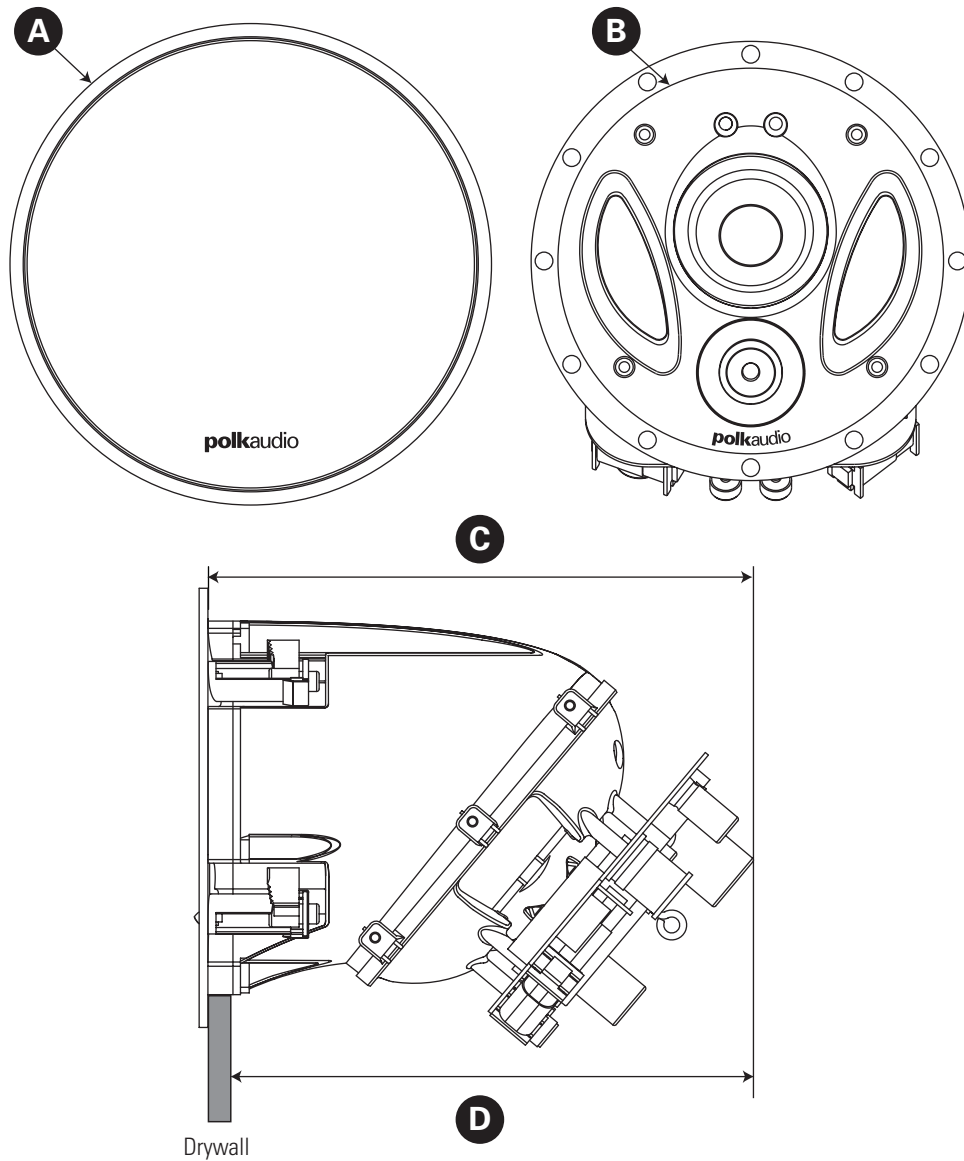
## DIMENSIONS

LS Models	900-LS	700-LS	500-LS
<b>A.</b> Overall Diameter	9 5/8" (244.48mm)	8 1/8" (206.38mm)	7 3/4" (195.58mm)
<b>B.</b> Cutout Diameter	8 3/16" (207.95mm)	6 1/2" (165.1mm)	6" (152.4mm)
<b>C.</b> Product Depth	9 1/2" (241.3mm)	8 1/2" (215.9mm)	8 5/8" (219.08mm)
<b>D.</b> Mounting Depth (using 1/2" drywall)	9" (228.6mm)	8" (203.2mm)	8 1/8" (206.38mm)

RT Models	90-RT	70-RT	50-RT
<b>A.</b> Overall Diameter	9 5/8" (244.48mm)	8 1/8" (206.38mm)	7 3/4" (195.58mm)
<b>B.</b> Cutout Diameter	8 3/16" (207.95mm)	6 1/2" (165.1mm)	6" (152.4mm)
<b>C.</b> Product Depth	9 1/2" (241.3mm)	8 1/2" (215.9mm)	8 5/8" (219.08mm)
<b>D.</b> Mounting Depth (using 1/2" drywall)	9" (228.6mm)	8" (203.2mm)	8 1/8" (206.38mm)

## SPECIFICATIONS

For complete Vanishing Series specifications, visit [www.polkaudio.com](http://www.polkaudio.com).



**polkaudio**<sup>®</sup> | the speaker  
specialists<sup>®</sup>

5601 Metro Drive  
Baltimore, Maryland 21215  
800-377-7655 (outside usA & CANADA: 410-358-3600)  
[www.polkaudio.com](http://www.polkaudio.com)



HBP2221