



BY PRO-JECT AUDIO SYSTEMS

INSTRUCTIONS FOR USE  
Pro-Ject MaiA DS



**AVAILABLE AT**  
**DIGITAL CINEMA**

Dear music lover,

Thank you for purchasing an integrated amplifier from Pro-Ject Audio Systems.

In order to achieve maximum performance and reliability you should study these instructions for use carefully.



Warning of a hazard for the user, the unit or possible misuse



Important notice

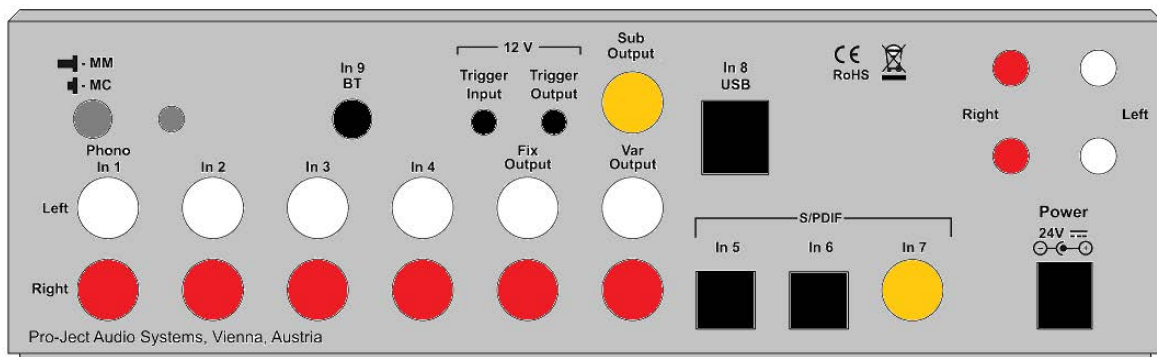
## Safety instructions

AC outlet voltages vary from country to country. Before connecting to the mains, make sure that the voltage in your area meets the voltage requirements printed on the power supply.



The power supply is used to connect/disconnect the unit from the mains. Make sure that the power supply is easily accessible at all times. Never handle the device, the power supply while your hands are wet or damp. Avoid letting liquids enter the device or the power supply. Never place any item containing liquid, such as a flower vase on or near the device. Never spill any liquid on the device or the power supply. Never place any naked flame sources, such as lighted candles on or near the device. The product shall not be used in damp or wet locations, next to a bathtub, sink, swimming pool or any other similar conditions.

## Connectors



1. Make all connections except the connection to the headphone and USB whilst the unit is disconnected from the mains.
2. Never connect or disconnect the power supply to or from the unit whilst the power supply is connected to the mains. Never use any other power supply than the supplied one, with the exception of dedicated Power Boxes which can replace original power supplies.
3. Take care to connect the left and right channels of RCA inputs correctly. The right channel is usually marked red, the left channel black or white.
4. Speaker connections for the left speaker are located on the right hand side of rear view above, connections to right speaker are located on the left side. Speaker connectors marked red represent + according indicators on speaker terminal.

## Trigger connections

Use **Trigger Input** to connect MaiA DS to Power Box MaiA DS. MaiA DS will turn on/off once Power Box MaiA DS is turned on/off.

**Trigger Output** allows to turn on/off any other Pro-Ject product which is equipped with **trigger input**.

## Line output

A power amplifier or active loudspeakers can be connected to the output sockets marked **Var Output**.

## Record output, connecting a headphone amplifier

**Fix Output** connects an analogue record device or a Pro-Ject Head Box headphone amplifier.

## Connection to the speakers

The output terminals accept loudspeaker cables terminated with 4mm Ø Banana plugs, spades connectors or naked wire.

## Phono input

Connect the tonearm signal lead to the **Phono** input of the amplifier. The MM/MC switch on the back panel allows to adapt to connected cartridge type. The earthing wire may be connected to the screw terminal if you encounter hum problems when using the turntable.

## Line inputs

Line level sources such as CD player, radio or TV can be connected to the input sockets marked **In2**, **In3** or **In4**.

## Digital inputs

Sources with a digital output such as TV satellite/cable receiver or a game console can be connected to the digital inputs. Optical to **In5** and **In6** and coaxial to **In7**.

## Subwoofer output

An active subwoofer may be connected to the output sockets marked **Sub Output**.

## Connecting to a Computer

Connect the USB-input **In8 USB** of the MaiA DS (unit must be switched on) to a free USB-socket on your computer and turn it on/make sure it is powered on. Select input **8**.

\* For Windows® operating systems an USB Class 2 driver (supplied on CD) has to be installed. For MaiA DS with Windows® version 1.61.2 or higher is needed.

Mac OS® operating systems do not need an additional driver or setup.

Linux operating systems include an USB Audio Class 2 driver from Linux Kernel 2.6.35 and higher.



*Please note: Connection should be made to an USB-socket of your computer directly. Connecting to USB-hubs or switches can cause problems.*

## 24Bit/192kHz playback with Windows® operating systems

\* For Windows® operating systems a 24Bit/192kHzUSB driver (supplied on CD) has to be installed. Insert the included CD into the drive of your PC and follow the instructions.

**After installing the driver, some settings have to be checked/done.**

For example - Windows 7® operating system:

→ Control Panel → Hardware and Sound → Sound → Playback:  
select **Speaker/MaiA USB 2.0 Audio Out**

→ Properties → Supported formats: **make sure nothing is assigned**

→ Level → Sound: setting must be **100**

→ Enhancements: **disable all enhancements** → Advanced → Default Format: set to **studio quality 24/192**

## DSD playback

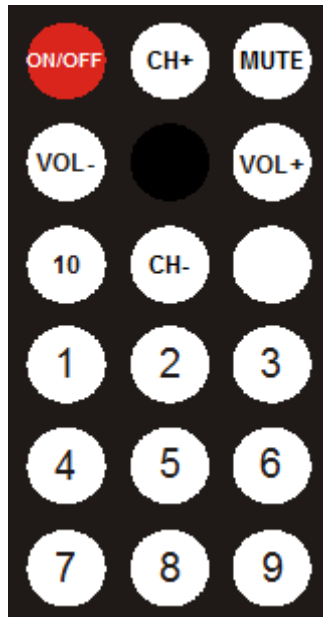
Playback of DSD files (.dff, .dsf) is possible over USB. Player capable of playing DSD files is required in your computer. Setup guide is available on our website <http://www.box-designs.com>

On the front panel are LED's which indicate sample rate of DSD playback.

## Mains power connection

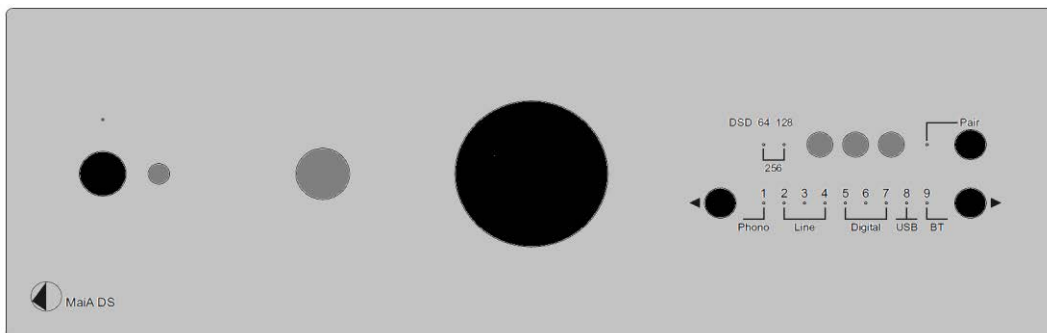
Connect the low voltage plug from the power supply to the **24V DC Power** socket before connecting the power supply to the mains.

## Remote control



- turns the unit on or back into standby
- and adjust the sound volume
- and select the inputs
- Blank button confirms Bluetooth pairing
- Activate/deactivate mute

## Front panel controls



### To switch on from standby or to standby

The push button on the left side of the front panel turns the unit on or back into standby. The blue LED above the stand-by push button shows that the unit is switched on. Mute is active when LED is blinking.

### Input selector

After the unit is powered on, pressing the buttons ◀ and ▶ next to the LEDs inputs indicators select desired input.

### Volume

Adjust the volume to the desired level, using the large knob on the front panel.

### Connecting a headphone

Connect the headphones to the 1/4" (6,3mm Ø) jack socket on the front of the unit.

## Bluetooth connection

Make sure the antenna is attached to its connector **In9 BT** on the back panel prior using Bluetooth. If the **Pair** LED is on, active audio connection with Bluetooth device is established.

### Pairing with Android devices

Open **Settings** and tap on **Bluetooth**. Turn on Bluetooth and tap on **Scan**. Searched devices will show up. Tap on **MaiA DS** and confirm presented pairing code on your Android device. Then press **Pair** button on **MaiA DS** (alternatively **Blank** button on remote control) when the blue **Pair** LED starts blinking. When paired with **MaiA DS**, your Android device will show "Connected to media Audio". Now you can play music from your Android device over Bluetooth to **MaiA DS**.



*Older devices may request a pairing code. Enter "0000" and confirm. No more confirmation on **MaiA DS** is then needed.*

### Bluetooth pairing with Apple devices

Tap on **Settings**, tap on **Bluetooth**, turn on Bluetooth. Your device will automatically start searching for available devices. Tap on **MaiA DS** and confirm by pressing **Pair** button on **MaiA DS** (alternatively **Blank** button on remote control) when the blue **Pair** LED of is blinking.

### Bluetooth pairing with Windows smartphones

Open **Settings** and tap on **Bluetooth**. Turn on Bluetooth and a scan for available devices starts automatically. Searched devices will show up. Tap on **MaiA DS** and confirm presented pairing code on your Windows device. Then press **Pair** button on **MaiA DS** (alternatively **Blank** button on remote control) when the blue **Pair** LED is blinking. When paired with **MaiA DS**, your Windows device will show "Connected to media Audio". Now you can play music from your Windows device over Bluetooth to **MaiA DS**.

### Bluetooth pairing with Windows PC

For example - Windows 7® operating system:

- Control Panel → Devices and Printers → Add device
- Select **MaiA DS** (make sure no other Bluetooth device is connected) → Confirm by pressing **Pair** button on **MaiA DS** (alternatively **Blank** button on remote control) when the blue **Pair** LED is blinking
- PC screen will display this question: "Confirm if code is identical"
- Select "Yes" and continue
- Select **MaiA DS** from list of devices with double-click
- Select "Listen to music" and make sure that "Bluetooth Audio" is selected as standard device



*A new connection is only possible if the **Pair** LED is off (it indicates that no device is connected). If a problem with Bluetooth connection occurs, it is necessary to reset memory and to delete all paired devices. For reset turn off the unit > disconnect power supply > press & hold power button > connect power supply > still hold power button for another 5 seconds > release power button. The blue LED above the power button will blink for few seconds. When the LED stops blinking, memory is erased and you can turn on the unit.*

### Bluetooth remote control function (Android application only)

IR emitting diodes are located on the front panel of the product. Free view has to be ensured for reliable use of remote control function.

*Bluetooth connection must be established prior using **MaiA DS** remote control function over Box control app.*

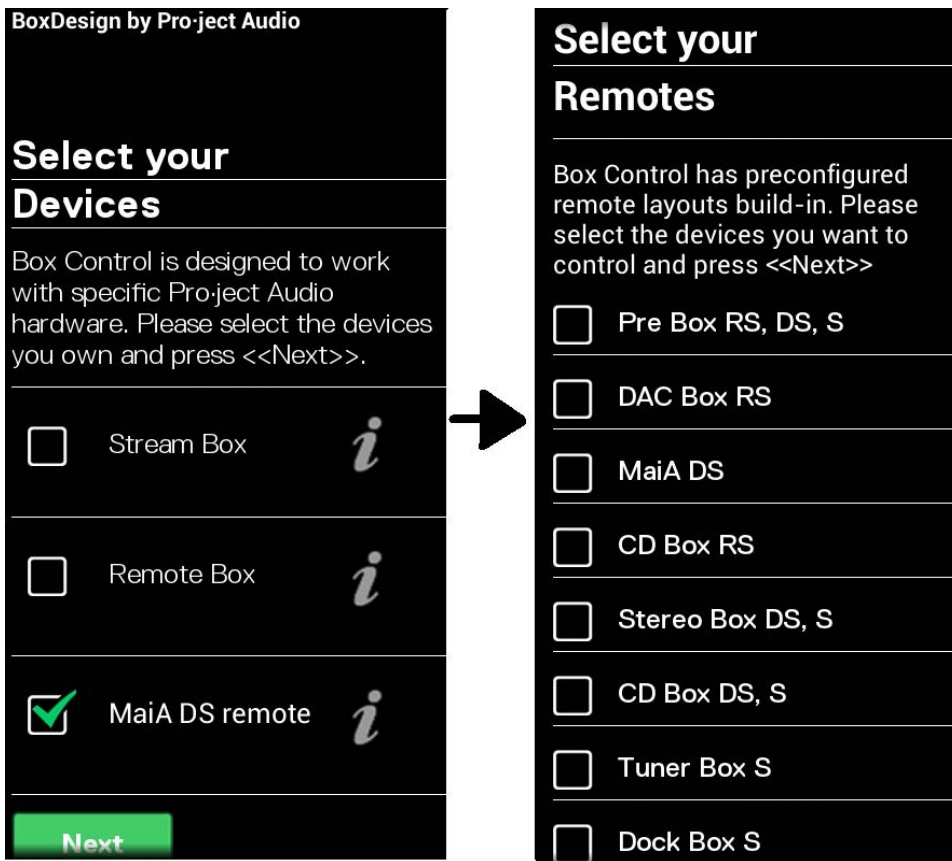


*Only one **MaiA DS** can be in the list of paired devices*

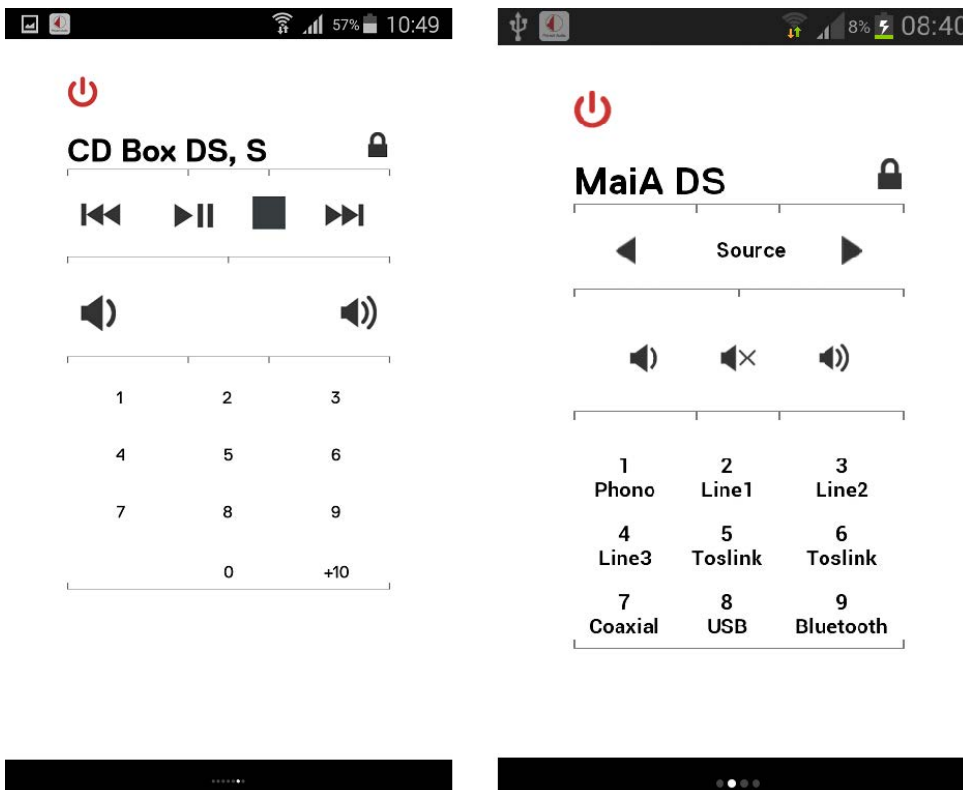
*Bluetooth remote control function is available in Box control app version 1.5 and higher.*

- Connect your Android device to **MaiA DS** over Bluetooth
- Run Box Control app

-After first start is automatically opened Setup wizard, in the first step (Select your Devices) select **MaiA DS** remote and confirm with "Next" and in second step check all the remotes you want to use and confirm your entry with "Next".



Once remotes are confirmed, you can use your Android device for IR control of the selected products.





Note: Learning other remote control commands via Box Control App is not possible with **MaiA DS**. This feature is only available with **Remote Box S**.

## Replacing batteries

Proceed as follows:

- Unlock and slide open the battery case cover
- Replace the battery.  
Make sure the battery is the right way round !
- Close the battery case cover



Battery type: 1 x CR2032 / 3V or 1 x CR2025 / 3V



Do not dispose the batteries as ordinary domestic refuse. Please dispose your exhausted batteries at the appropriate collection sites - usually located at supermarkets and drugstores.

## Technical specifications Pro-Ject MaiA DS

Power output :	2x 40W/55W at 8 ohms/4 ohms (both channels driven)
Frequency response :	20Hz - 20kHz (-0,3dB, -2,5dB)
Channel separation :	> 65dB at 20kHz
Noise floor :	> -90dB (A weighted)
THD :	< 0,07% at 15W
Gain :	34dB (measured via line level input)
Line level inputs :	3 pair RCA
Line input sensitivity :	350mV
Line input impedance :	50kohms
Phono input :	1 pair RCA
Phono input impedance MM/MC :	47kohms/100ohms
Phono input gain MM :	44dB
S/PDIF coaxial input :	up to 24bit and 192kHz
S/PDIF optical input :	up to 24bit and 96kHz
USB input :	USB Audio Class 2 requires USB 2.0 or higher on computer
USB data transfer :	Asynchronous with DSD DoP 64/128/256 support
Digital to Analogue converter :	PCM1796 24bit/192kHz Multi-bit Delta Sigma type
Variable line level output :	1 pair RCA
Fixed line level output :	1 pair RCA
Subwoofer output :	1x RCA
Bluetooth version:	2.1 +EDR
Bluetooth music receiver codec :	aptX, A2DP profile, SPP for an app remote control
Bluetooth range :	10 meters in direct visibility between source and receiver
Speakers connectors:	4mm banana plugs, spades connectors or naked wire
Headphone output :	6,3mm jack (16 – 600ohms)
Trigger sockets:	2,5mm 2-pole
Outboard power supply :	24V/5A DC, suitable for your country's mains supply
Power consumption :	max. 5A DC, <1W in standby
Replacement battery remote control :	1 x CR2032 / 3V or 1 x CR2025 / 3V
Dimensions W x H x D (D with sockets) :	206 x 72 x 150 (165)mm
Weight :	1550 g without power supply

## Service

Should you encounter a problem which you are not able to alleviate or identify, please contact your dealer for further advice. Only if the problem cannot be resolved there, the unit should be sent to the responsible distributor in your country.

## Warranty



*The manufacturer accepts no responsibility for damage caused by not adhering to these instructions for use. Modification or changes to any part of the product by unauthorized persons release the manufacturer from any liability over and above the lawful rights of the customer.*

## Copyright, trademarks

Pro-Ject Audio Systems is a registered Trademark of H. Lichtenegger.

This guide was produced by: Pro-Ject Audio Systems  
Copyright © 2015. All rights reserved.

The information was correct at the time of going to press. The manufacturer reserves the right to make changes to the technical specification without prior notice as deemed necessary to uphold the ongoing process of technical development.