

Wharfedale

VISTA 100

32" Soundbar



Please read this user's guide before using your new soundbar.



**AVAILABLE AT
DIGITAL CINEMA**



Package Contents

- Soundbar
- AC-to-DC Power Adapter
- RCA Cable
- AC Power Cord
- Remote Control
- Mounting Template
- User's Guide

Features

- Provides powerful sound to enhance your listening experience
- Sonic Emotion Absolute 3D technology* produces rich, full sound that permeates every inch of your room
- Compatible with most Bluetooth®-enabled tablets, laptops, MP3 players, and smartphones with iOS or Android™ platform
- Remote for convenient controlling from a distance

*



Sonic Emotion Absolute 3D is the listening experience.

Important Safety Instructions

1. Read these instructions. Keep these instructions.
2. Heed all warnings.
3. Follow all instructions.
4. Do not use this soundbar near water.
5. Clean only with dry cloth.
6. Do not block any ventilation openings. Install in accordance with the manufacturer's instructions.
7. Do not install near any heat sources such as radiators, heat registers, stoves, or other apparatus (including amplifiers) that produce heat.
8. Protect the power cord from being walked on or pinched, particularly at plugs, convenience receptacles, and the point where they exit the soundbar.
9. Use only attachments/accessories specified by the manufacturer.
10. Use only with the cart, stand, tripod, bracket, or table specified by the manufacturer, or sold with the soundbar. When a cart is used, use caution when moving the cart/soundbar combination to avoid injury from tip-over.
11. Unplug this soundbar during lightning storms or when unused for long periods of time.
12. Refer all servicing to qualified service personnel. Servicing is required when the soundbar has been damaged in any way, such as if the power-supply cord or plug is damaged, liquid has been spilled or objects have fallen into the soundbar, it has been exposed to rain or moisture, it does not operate normally, or it has been dropped.



Warnings and Precautions

- To reduce the risk of electric shock, do not remove cover (or back). There are no user-serviceable parts inside.
- Do not expose the soundbar to dripping or splashing liquids. Do not place objects filled with liquids (such as vases) on the soundbar.
- The mains plug is used as the disconnect device. It shall remain readily operable and should not be obstructed during intended use. To completely disconnect the soundbar from supply mains, the main plug of the product shall be disconnected from the mains socket outlet completely.
- Using the soundbar near fluorescent lighting may cause interference with the remote. If the soundbar is behaving erratically, move away from any fluorescent lighting.

Mounting the Soundbar (Optional)

1. Locate a place for mounting the soundbar. Make sure you have enough room for both ends of the soundbar to present unobstructed sound transmission.
2. Use the supplied mounting template to mark two screw hole positions. Use two screws (not supplied) with heads no bigger than the soundbar's mounting holes.
3. Align the soundbar's mounting holes with the screw heads and slide down to secure the soundbar.

Connections

INPUT

Switch to *LINE*, *AUX*, *OPT* (optical), *COAX* (coaxial), or *BLUETOOTH*.

()
Power On/Off



INPUT



EQ

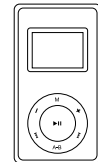
Volume Control (+/-)

EQ

3D Equalizer sound options (*MUSIC*, *MOVIE*, *GAME*, and *3DOFF*).

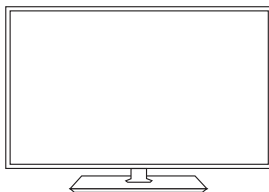


Mounting Holes (Optionally)



LINE IN Port Connection

Use a 3.5mm audio cable (not supplied) to connect to an additional audio device.

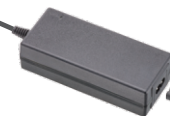


AUX IN Ports Connection

Use the RCA cable to connect to a TV, DVD player, game system, etc.

DC IN

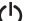
Use the AC-to-DC power adapter and AC power cord to connect to a wall outlet.



To an optical port (optical cable not supplied)

To a coaxial port (coaxial cable not supplied)

Using the Soundbar

1. Turn on your device and turn down its volume.
2. Press  to turn on the soundbar, and turn down its volume.
3. Press **INPUT** to switch to *LINE*, *AUX*, *OPT* (optical), *COAX* (coaxial), or *BLUETOOTH* mode.

You can also press **BLUETOOTH** on the remote to go to Bluetooth mode directly.

4. Press **EQ** to choose a sound option or press **MUSIC**, **MOVIE**, **GAME**, or **OFF** on the remote.

You can customize each option by adjusting the bass and treble sound levels, **BASS +/-** and **TREBLE +/-**.

5. After starting playback on your device, adjust the volume of the device and soundbar to a comfortable level.

Note: *The soundbar enters standby mode if you pause it for more than 15 minutes or if the Bluetooth connection is broken for 15 minutes.*

Using the Bluetooth Function

1. After you turn on the soundbar and switch to Bluetooth mode (*BLUETOOTH* scrolls on the display), the soundbar searches for a Bluetooth-enabled device (*BT PAIRING* scrolls on the display).
2. Activate your device's Bluetooth function (refer to your device's user's guide). If your device uses

Note: During Bluetooth connection, if you need to pair your soundbar to other Bluetooth devices, press and hold the **BLUETOOTH** button on the remote. The current Bluetooth connection is interrupted, and the soundbar starts searching for other Bluetooth devices.

Battery Notes:

- Dispose of batteries promptly and properly. Do not burn or bury them. Use only fresh batteries of the required size and type.
- Do not mix old and new batteries, different types of batteries (standard, alkaline, or rechargeable), or rechargeable batteries of different capacities.
- If you do not plan to use the remote control for a long time, remove the batteries. Batteries can leak chemicals that can damage electronic parts.

Specifications

Power InputDC 15V, 4A
 Output (RMS) 10W × 6
 Frequency Response65 Hz – 18 kHz
 Drivers 75mm × 2, 70mm × 2, 50mm × 2
 Bluetooth Connection Range..... 30 ft. (9.1m)
 Bluetooth Protocol..... V2.1 + EDR Class 2
 Dimensions (WHD)..... 32 × 4.3 × 3.8 in
 (810 × 110 × 98mm)
 Weight (soundbar) 7.4 lb (3.36kg)

Specifications are subject to change and improvement without notice. Actual product may vary from the images found in this document.

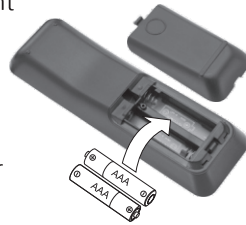
Troubleshooting

Problem	Solution
No sound and display	<ul style="list-style-type: none"> ■ Make sure the AC power cord is plugged into a working outlet and firmly connected to the soundbar. ■ Check the connection of your device to the soundbar.
Distorted sound	Check your source device to see if it is causing the distortion. Set the device and soundbar volume to a low level.
Unbalanced sound	If the volume remains low even when the soundbar's volume is turned all the way up, check the source device to make sure it is connected via a variable output. Make sure the output is not turned down too low.
Bluetooth function failure	<ul style="list-style-type: none"> ■ Avoid electromagnetic interference or interference caused by other Bluetooth devices. ■ Make sure your Bluetooth device supports audio transfer, is discoverable and has its volume turned up. ■ Disconnect power, then connect power again and turn on the soundbar. ■ If the connected device moves too far away from the soundbar, the soundbar disconnects from the device. Move the device close. The connection resumes automatically. ■ In Bluetooth mode but without Bluetooth connection, press and hold EQ on the soundbar to clear the list of devices paired to the soundbar. Then pair the soundbar to your device again.

Bluetooth 2.0 and below, enter the password 0000 for Bluetooth connection.

Using the Remote Control

1. Open the battery compartment and install two AAA batteries (not included), matching the polarity symbols (+ and -) marked inside.
2. Point the remote at the center of the soundbar to control it.



Power On/Off (⏻)
Turn sound on or off.

MUTE

Turn sound on or off.

DIM

Adjust screen brightness.

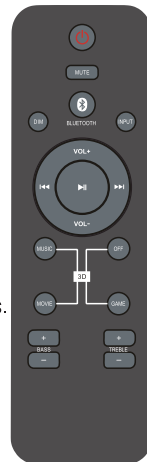
VOL +/-

MUSIC, MOVIE, GAME, OFF

3D Equalizer sound options.

BASS +/-

Adjust the bass tone.



BLUETOOTH

Go to BLUETOOTH mode.

INPUT

Switch among LINE, AUX, OPTICAL, and COAXIAL mode.



Go to previous/next track.



Play/Pause.

TREBLE +/-

Adjust the treble tone.

AUTHORISED SERVICE CENTRES

IAG House, 13/14 Glebe Road, Huntingdon, Cambridgeshire,
PE29 7DL, UK

Tel: +44(0)1480 452561 Fax: +44(0)1480 413403

For information on other authorised service centres worldwide
contact Wharfedale International in the U.K.

A worldwide distributor list is available on the Wharfedale
website: www.wharfedale.co.uk

Wharfedale has a policy of continuous product development

The name WHARFEDALE is a registered trademark of
Wharfedale International Ltd. Wharfedale is a member of the
International Audio Group

Caution: Use only power supplies listed in the user instructions

Note: AC Adapter

Mfr: Dongguan Dongsong Electronic Co., Ltd

Model No.: DYS602-150400W