

Definitive Technology's Ultimate Performance Architectural Speakers

"Truly outstanding!"
—Home Theater Magazine

**DIGITAL
CINEMA**

**AVAILABLE AT
DIGITAL CINEMA**

Definitive Technology[®]
The Leader in High-Performance Loudspeakers[®]

Definitive's Grand Prix Award-W

D

efinitive Technology's total commitment to uncompromised sonic superiority has made us the leader in high performance loudspeakers. We are pleased to introduce our architectural loudspeakers. This extensive line of reference-quality loudspeakers offers the highest level of sonic performance and construction quality. They are designed for easy in-wall/in-ceiling installation in homes as well as commercial spaces. Sound quality, of course, is extraordinary and the speakers have been voiced for warm, rich sonic reproduction by Definitive engineers to the same state-of-the-art, high-end standards as all Definitive loudspeakers.

These Remarkable Systems Feature:

- Absolute State-of-the-Art Sonic Performance for Music and Home Theater Perfection
- Low Diffraction Driver/Baffle Interface
- Easy-to-Install Metal Pivoting Dog Mounting System
- Ultra-Wide Dispersion for a Huge, Rich, Lifelike Soundfield Throughout Your Room
- Pure Aluminum Dome Tweeters w/Silk Surrounds
- Rigid Non-Resonant Glass-Filled Low Profile Frames
- Cast-Basket Bass/Midrange Drivers (except 63/A & 83/A)
- Beautiful Decorator-Approved Designer Styling
- Mounting Templates and Paint Masks Included
- Optional New Construction Rough-In Kits Available
- Easy-to-Paint and Moisture-Resistant
- Five-Year Parts and Labor Warranty (UIWs)

We offer a wide range of ultimate performance round, rectangular, bipolar, dual-channel and outdoor speakers which are perfect to suit your every architectural need (and your decorator's too). These critically acclaimed loudspeakers have been painstakingly engineered to ensure that they achieve the same level of superior sonic performance as our flagship floor-standing speakers, which are renowned for offering the finest sound quality possible. In addition, their subtle and understated, but beautifully sculpted, upgraded styling will complement any decor. Our architectural speakers utilize the same state-of-the-art components and technologies developed for our top-of-the-line speakers including high-definition cast-basket bass/midrange drivers and pure aluminum dome tweeters. One listen and you will know they are the finest sounding architectural in-wall/in-ceiling and outdoor speakers in the world.

The Sonic Superiority of Definitive's Architectural Speakers

The most striking difference you will hear when you listen to Definitive speakers is the extremely big, open quality to the sound. Smooth natural sound is produced with a lifelike, three-dimensional character that really brings music and movies to life. It is as if the music or cinematic action is actually being performed live in your home. Of course their performance by all measurable parameters is superb, but it is their almost magical ability to suspend disbelief and recreate the illusion of a live performance which really sets our architectural speakers apart. And so does the way their velvety smooth high-definition midrange, crystal clear high frequencies, and deep, tight and impactful bass perfectly blend into an ultra-coherent wide-dispersion soundfield which will fill your home with sonic perfection.

Our High-Definition Cast-Basket Bass/Midrange Drivers

All our architectural speakers (except the UIW 63/A and UIW 83/A) utilize Definitive-developed high-definition cast-basket bass/midrange drivers for significant performance advantages in the areas of bass reproduction, lifelike midrange clarity and dynamic range. These sophisticated drivers are engineering marvels which incorporate deeply drawn mineral-filled homopolymer cones, combined with butyl rubber dustcaps and surrounds, high-temperature vented voice coils and massive magnet structures. This combination of features assures high-definition, superb transient response, high-efficiency, high-power handling and extended linear response. In addition, the aerodynamically designed, magnetically inert, non-resonant cast baskets minimize reflections of the sound radiating from the back of the cones and preserve structural and magnetic integrity.

Definitive's Moving-Coil Pure Aluminum Dome Tweeters

The accuracy of high frequency reproduction really sets apart a great loudspeaker. The Definitive-developed magnetic fluid-cooled moving-coil pure aluminum dome tweeters are of a unique design that synergistically brings together the performance advantages of metal domes (greater clarity) and soft domes (smoother sound and better dampening) in one state-of-the-art tweeter design. The pure aluminum dome is specially annealed (to "relax" the crystal structure) and acoustically loaded by a precisely configured acoustic phase plug/lens (to assure perfectly controlled, absolutely linear movement). In addition, the unique silk surround provides better dampening and wave termination. The audible benefits of all this highly advanced engineering include velvety smooth extended high frequency response (beyond 30 kHz), greatly reduced distortion, improved transient response, notably higher definition and crystal clear lifelike clarity.

Non-Resonant Low-Diffraction Baffles Maintain Sonic Purity

A speaker's baffle, as well as the driver/baffle interface, plays a large part in its sonic performance. Diffraction, or the secondary radiation of sound caused by driver and baffle edges and other protrusions and surface anomalies, can color the sound and impart a boxy coloration.

The UIWs and AW Series speakers are carefully engineered to minimize diffraction problems. In addition, the resonant vibration of a speaker baffle can also impart coloration. We engineer the baffles for maximum stiffness and mold them from a special glass-filled polymer compound in order to eliminate baffle resonance which would otherwise interfere with the pure sound produced by Definitive's high-definition drivers. Finally, a special wall clamping system was designed which uses special high-tension clamps (and more of them) in order to further stiffen the baffle and eliminate unwanted resonance.

The Sonic Benefits of our Extraordinary Bipolar UIW Speakers

Definitive Technology is famous for our high-end, floor-standing bipolar speakers. They have two complete sets of drivers which face in different directions and radiate sound in an omnidirectional pattern, the way sound is radiated in real life. We make two bipolar in-wall/in-ceiling loudspeakers, the UIW BP/A and UIW BPZ/A, which provide you with a lifelike balance of early-arrival information (giving focus, clarity and location data) and properly delayed-arrival information (enhancing spaciousness and conveying the lush three-dimensional soundstage of a live music or cinematic performance). The bipolars literally immerse you in a soundfield which is rich, warm, ultra-clear and vibrantly alive. In addition, the wide-dispersion characteristics of our bipolar speakers assure a superb panorama of lifelike sound for every listener in your room, wherever they sit or stand.

The UIW bipolars are perfect for use anywhere you want a high-performance, flush-mount architectural speaker, and they are clearly the in-wall or in-ceiling speakers of choice for side surrounds, rear surrounds or center rear surrounds for Dolby Digital*, Dolby Surround* or any home theater surround sound system.

Choose Our Ultimate Performance Architectural Speakers for a Spectacular Built-in Home Theater System

In addition to bringing music into every room in your house, Definitive UIW speakers are perfect for a spectacular-sounding, high-performance home theater system. Choosing the perfect system is easy because all Definitive speakers are engineered to have the same timbral balance and sonic signature; so they can all be used together in any combination with excellent results. The top-of-the-line signature Definitive UIW home theater system would use three matching UIW BPZ/As or UIW 75s across the front and UIW BPZ/As as rear and/or side surround speakers. This system will sound great and deliver excellent bass without a separate subwoofer. However, you can add any of Definitive's superb powered subwoofers for even higher performance. Remember: any combination of UIWs will work well together and deliver superior performance; so pick the ones that best suit your budget as well as your specific size, design, mounting and listening requirements.

Save Space with Our Unique Two-Channel DCS Speakers

With two complete channels in one (angled for proper separation) our UIW DCS speakers are the perfect space-saving solution for providing high quality stereo from a single in-wall/in-ceiling speaker anywhere in your home that you want beautiful music. The DCSs are also perfect as a single speaker two-channel rear surround for Dolby Digital, Prologic* and EX* or as a single rear plus side surround for Dolby EX (two DCSs will reproduce all four surround channels).

UIW Warranty: 5 years parts & labor. **AW100 Warranty:** 3 years parts & labor.

Winning Architectural Speakers



Reference High-Definition UIW BPZ/A Dual 6.5" Cast-Basket Two-Way Bipolar System

The remarkable UIW BPZ/A is a bipolar in-wall/in-ceiling loudspeaker. It is intended for use as a main system speaker (whose bipolar pattern gives you tremendously enhanced spaciousness plus unequaled dispersion throughout your room). In addition, it is a superb rear/side surround speaker for Dolby Digital and Dolby ProLogic systems and is also perfect for producing exceptional sounding music anywhere you want it. Creative design has resulted in a compact unit with a grille which is almost flush with the wall. A complex Linkwitz-Riley crossover seamlessly blends two 6 1/2" cast-basket drivers with two 1" pure aluminum dome tweeters for superb dynamic range and exceptional sonic performance.

Mounting Dimensions—**Outer Flange Size:** 8 1/2" W x 14 3/4" H. **Cut-Out Size:** 7 7/16" W x 13 5/8" H. **Depth from Flange**:** 3 3/4". **Frequency Response:** 26 Hz – 30 kHz. **Drivers:** Two 6 1/2" cast-basket drivers with two 1" pure aluminum dome tweeters. **Rec. Amp.:** 10 – 300 Watts per channel. **Nominal Imp.:** 4 – 8 ohms.



UIW BP/A Reference High-Definition Dual 5.25" Cast-Basket Two-Way Bipolar System

The UIW BP/A is a smaller version of the UIW BPZ/A with two 5 1/4" bass/midrange drivers plus two 1" pure aluminum dome tweeters.

Mounting Dimensions—**Outer Flange Size:** 7 1/8" W x 12 1/2" H. **Cut-Out Size:** 6 1/8" W x 11 7/16" H. **Depth from Flange**:** 3 3/8". **Frequency Response:** 2 8 Hz – 30 kHz. **Drivers:** Two 5 1/4" cast-basket drivers with two 1" pure aluminum dome tweeters. **Rec. Amp.:** 10 – 250 Watts per channel. **Nominal Imp.:** 4 – 8 ohms.



UIW 75 Reference High-Definition Dual 6.5" Cast-Basket Two-Way D'Appolito System

Definitive's UIW 75 in-wall/in-ceiling features the same dual 6 1/2" drivers and 1" pure aluminum dome tweeter as our Grand-Prix award-winning BP3000TL flagship system's front array. They are perfectly blended with a complex phase-coherent Linkwitz-Riley crossover network with user-selectable equalization. The UIW 75s are perfect for LCR use in top-of-the-line home theaters or for producing exceptional sounding music throughout your home.

Mounting Dimensions—**Outer Flange Size:** 7 1/2" W x 16 5/8" H. **Cut-Out Size:** 6 1/2" W x 15 1/2" H. **Depth from Flange**:** 3 3/16". **Frequency Response:** 26 Hz – 30 kHz. **Drivers:** Two 6 1/2" cast-basket bass/midrange drivers, 1" pure aluminum dome tweeter in a D'Appolito array. **Rec. Amp.:** 10 – 300 Watts per channel. **Nominal Imp.:** 4 – 8 ohms.



UIW 65 Reference High-Definition 6.5" Cast-Basket Two-Way System

The UIW 65 is a smaller version of the UIW 75 with one, rather than two, 6 1/2" cast-basket bass/midrange drivers and our signature 1" pure aluminum dome tweeter blended with a Linkwitz-Riley crossover network with user-selectable equalization.

Mounting Dimensions—**Outer Flange Size:** 7 1/2" W x 10 3/16" H. **Cut-Out Size:** 6 7/16" W x 9 13/16" H. **Depth from Flange**:** 3 5/16". **Frequency Response:** 28 Hz – 30 kHz. **Drivers:** 6 1/2" cast-basket bass/midrange driver, 1" pure aluminum dome tweeter in a D'Appolito array. **Rec. Amp.:** 10 – 200 Watts per channel. **Nominal Imp.:** 4 – 8 ohms.



UIW 55 Reference High-Definition 5.25" Cast-Basket Two-Way System

The UIW 55 is a more compact version of the UIW 65. It blends a 5 1/4" cast-basket bass/midrange driver with a 1" pure aluminum dome tweeter (the same basic drivers used in the Grand Prix award-winning BP2002TL) with a sophisticated phase-coherent Linkwitz-Riley crossover network with user-selectable equalization.

Mounting Dimensions—**Outer Flange Size:** 6 1/16" W x 10 3/8" H. **Cut-Out Size:** 5 1/2" W x 9 1/4" H. **Depth from Flange**:** 3 5/16". **Frequency Response:** 35 Hz – 30 kHz. **Drivers:** 5 1/4" cast-basket bass/midrange driver, 1" pure aluminum dome tweeter. **Rec. Amp.:** 10 – 175 Watts per channel. **Nominal Imp.:** 4 – 8 ohms.



UIW 94/A Reference High-Definition 9" Cast-Basket Two-Way System

The UIW 94/A is the best sound round in-wall/in-ceiling speaker available in the marketplace. It combines a long-throw signature quality cast-basket Definitive 9" bass/midrange driver with a 1" pivoting pure aluminum dome tweeter. Its 9" bass/midrange driver gives it the best bass performance of any round in-wall/in-ceiling speaker available.

Mounting Dimensions—**Outer Flange Size:** 10 3/4" diameter. **Cut-Out Size:** 9 5/8" diameter. **Depth from Flange**:** 3 7/8". **Frequency Response:** 26 Hz – 30 kHz. **Drivers:** 9" cast-basket bass/midrange driver and a 1" pure aluminum dome tweeter in a coaxial configuration. **Rec. Amp.:** 10 – 300 Watts per channel. **Nominal Imp.:** 4 – 8 ohms.



UIW 83/A High-Definition 8" Two-Way System

The UIW 83/A is a superb-sounding round 8" loudspeaker. It combines a stamped-basket 8" bass/midrange driver with a 1" pure aluminum dome tweeter. Its 8" bass/midrange driver gives it outstanding bass performance.

Mounting Dimensions—**Outer Flange Size:** 10" diameter. **Cut-Out Size:** 9" diameter. **Depth from Flange**:** 3 7/8". **Frequency Response:** 27 Hz – 30 kHz. **Drivers:** Stamped-basket 8" bass/midrange driver and a 1" pure aluminum dome tweeter in a coaxial configuration. **Rec. Amp.:** 10 – 250 Watts per channel. **Nominal Imp.:** 4 – 8 ohms.



UIW 64/A Reference High-Definition 6.5" Cast-Basket Two-Way System

The UIW 64/A is a smaller version of the UIW 94/A with a 6 1/2" rather than a 9" cast-basket bass/midrange driver and a 1" pivoting pure aluminum dome tweeter.

Mounting Dimensions—**Outer Flange Size:** 8 3/4" diameter. **Cut-Out Size:** 7 5/8" diameter. **Depth from Flange**:** 3 7/8". **Frequency Response:** 28 Hz – 30 kHz. **Drivers:** 6 1/2" cast-basket bass/midrange driver with a pivoting 1" pure aluminum dome tweeter. **Rec. Amp.:** 10 – 200 Watts per channel. **Nominal Imp.:** 4 – 8 ohms.



UIW 63/A High-Definition 6.5" Two-Way System

The UIW 63/A is a surprisingly affordable, yet superb sounding round loudspeaker. It combines a stamped-basket version of Definitive's signature 6 1/2" bass/midrange driver with a 1" pure aluminum dome tweeter.

Mounting Dimensions—**Outer Flange Size:** 8 3/4" diameter. **Cut-Out Size:** 7 5/8" diameter. **Depth from Flange**:** 3 3/4". **Frequency Response:** 30 Hz – 30 kHz. **Drivers:** stamped-basket 6 1/2" bass/midrange driver with a 1" pure aluminum dome tweeter in a coaxial configuration. **Rec. Amp.:** 10 – 200 Watts per channel. **Nominal Imp.:** 4 – 8 ohms.



UIW DCS 6 Reference High-Definition 6.5" Cast-Basket Two-Way Dual-Channel System

The UIW DCS 6 is a unique, space-saving, dual-channel in-wall/in-ceiling speaker. It contains two complete full range speaker systems on one compact baffle. The two systems are angled to radiate in two directions thus enabling the UIW DCS 6 to be used as a single stereo speaker for all architectural applications, single unit rear surround speaker for Dolby Digital or as a pair of surround speakers to handle both the rear and side channels in Dolby EX systems.

Mounting Dimensions—**Outer Flange Size:** 8 1/2" W x 14 3/4" H. **Cut-Out Size:** 7 7/16" W x 13 5/8" H. **Depth from Flange**:** 3 3/4". **Frequency Response:** 28 Hz – 30 kHz. **Drivers:** Two cast-basket 6 1/2" bass/midrange drivers with two 1" pure aluminum dome tweeters. **Rec. Amp.:** 10 – 200 Watts per channel. **Nominal Imp.:** 4 – 8 ohms.



UIW DCS 5 Reference High-Definition 5.25" Cast-Basket Two-Way Dual-Channel System

The UIW DCS 5 is a smaller version of the UIW DCS 6 with two 5 1/4" bass/midrange drivers and two 1" pure aluminum dome tweeters perfectly blended with two complex Linkwitz-Riley crossovers.

Mounting Dimensions—**Outer Flange Size:** 7 1/8" W x 12 1/2" H. **Cut-Out Size:** 6 1/8" W x 11 7/16" H. **Depth from Flange**:** 3 3/8". **Frequency Response:** 35 Hz – 30 kHz. **Drivers:** Two cast-basket 5 1/4" bass/midrange drivers with two 1" pure aluminum dome tweeters. **Rec. Amp.:** 10 – 175 Watts per channel. **Nominal Imp.:** 4 – 8 ohms.

Specifications subject to change.

* Registered trademarks. ** Including drywall thickness.

Extraordinary New Custom Installation Solutions for Your Ultimate Home Theater

“it’s really beyond amazing ... I can think of no in-wall speaker system that matches their versatility, sound quality and value”

— Brent Butterworth, *Home Entertainment*
(UIW RLS II & IWSub Reference System)

IWSub 10/10 Fully-Enclosed In-Wall Powered Sub

Definitive’s new IWSub 10/10 in-wall sub, based on our exclusive SuperCube Subwoofer Technology, is an engineering triumph. The driver system using SuperCube derived technology allows us to achieve remarkable bass performance from a cabinet enclosure of very modest internal volume. Finally a true high-performance subwoofer of moderate size which can be easily installed or retrofitted flush into a 4" deep wall in either new or existing construction. The IWSub 10/10 will deliver superb output performance when used singly, or in pairs for larger rooms or great output. The paintable bezel and grille allow you to customize your IWSub to match your home décor and virtually disappear into your room.

Mounting Dimensions—Outer Flange Size: 15 $\frac{1}{2}$ " W x 21" H. **Cut Out Size:** 14 $\frac{3}{8}$ " W x 19 $\frac{7}{8}$ " H x 3 $\frac{3}{16}$ " D. **Frequency Response:** 16Hz – 200 Hz. **Drivers:** One 10" long-excursion woofer coupled to a 10" infrasonic radiator. **Rec. Assoc. Amp.:** SubAmp 600. **Nominal Imp.:** 4 ohms.

SubAmp 600, IWSubs' Matching Amplifier

The IWSubs' matching high-power amplifier, the SubAmp 600, is a separate unit designed for shelf, cabinet or rack placement. It features two discrete high powered amplifiers to provide optimal power when driving one or two IWSub 10/10s or IWSub References in your installation, whether it is configured into multi-room systems, dedicated music or home theater applications.

Dimensions (with brackets, feet removed): 19 $\frac{1}{16}$ " W x 37 $\frac{1}{8}$ " H x 9 $\frac{5}{8}$ " D. **Dimensions** (without brackets, including feet): 17 $\frac{1}{16}$ " W x 31 $\frac{1}{16}$ " H x 9 $\frac{5}{8}$ " D. **Output:** one channel operation: 275 Watts, two channels driven: 230 Watts each, 460 Watts total.

IWSub Reference Fully-Enclosed In-Wall Powered Sub

Like Definitive’s first in-wall super sub, the IWSub 10/10, the IWSub Reference is a completely self-enclosed in-wall subwoofer for use in whole house distributed music or “stealth” home theater installations. The performance of the IWSub Reference goes well beyond the output level, impact and low frequency limits of even its superb smaller cousin the IWSub 10/10, while maintaining its fast, tight musical quality. The Reference produces musically accurate low end that’s never before been available in a compact, nearly invisible in-wall subwoofer that installs easily in new construction or existing walls. The IWSub Reference will deliver superb output performance when used singly, or in pairs for larger rooms or great output.

Mounting Dimensions—Outer Flange Size: 15 $\frac{1}{2}$ " W x 26 $\frac{3}{16}$ " H x 4" D. **Cut Out Size:** 14 $\frac{3}{8}$ " W x 25 $\frac{1}{8}$ " H x 4" D. **Rec. Assoc. Amp.:** SubAmp 600. **Frequency Response:** 14 Hz – 200 Hz. **Nominal Imp.:** 4 – 8 ohms. **Drivers:** One 13" long-excursion woofer coupled to a 13" infrasonic radiator.

UIW RLS II: Reference Line Source Ultimate In-Wall Speaker

The UIW RLS II is an enclosed full range loudspeaker engineered for flush mount vertical or horizontal in-wall installation. The sealed non-resonant mediate enclosure houses a line source array composed of two high definition bass/mid drivers with cast baskets for natural midrange, surrounding a pure aluminum dome tweeter for silky smooth high frequency response, plus two pressure-driven bass radiators for deep powerful low frequency extension. Use the UIW RLS II as a main Left, Right, Center or Surround Loudspeaker in a “stealth” high performance home theater or multichannel music system. The UIW RLS II is capable of extraordinary sonic performance, comparable to that of even the finest freestanding loudspeakers, yet it remains hidden within your walls and takes up no floor space! Add a Definitive Technology subwoofer, such as one of our IWSubs, for the addition of even more high impact perfectly blended deep bass response.

Mounting Dimensions—Outer Flange Size: 8 $\frac{1}{8}$ " W x 29 $\frac{3}{4}$ " H. **Cut Out Size:** 7" W x 28 $\frac{1}{2}$ " H x 37 $\frac{3}{8}$ " D. **Driver Complement:** two 6 $\frac{1}{2}$ " bass/midrange drivers, two 6 $\frac{1}{2}$ " pressure-driven bass radiators, one 1" pure aluminum dome tweeter. **Frequency Response:** 22 Hz – 30 kHz. **Recommended Amplification:** 10 – 350 Watts.

“They sound superb” —The Perfect Vision

UIW RLS III: Reference Line Source Ultimate In-Wall Speaker

Definitive’s latest Ultimate In-Wall, the RLS III, is the second in-wall Reference Line Source loudspeaker from Definitive. It is basically a smaller version of the RLS II, a completely enclosed full range loudspeaker engineered for flush mount vertical or horizontal in-wall installation.

Mounting Dimensions—Outer Flange Size: 7" W x 25" H. **Cut Out Size:** 5 $\frac{7}{8}$ " W x 23 $\frac{3}{4}$ " H x 37 $\frac{3}{8}$ " D. **Driver Complement:** two cast-basket 5 $\frac{1}{4}$ " high-definition bass/midrange drivers, two 5 $\frac{1}{4}$ " planar pressure coupled bass radiators, one 1" pure aluminum dome tweeter. **Frequency Response:** 24 Hz – 30 kHz. **Recommended Amplification:** 10 – 325 Watts.



“Extraordinary ...
the perfect subwoofer”

— Jeff Cherun, *HDTV ETC.*



Definitive Technology®
The Leader in High-Performance Loudspeakers®

11433 Cronridge Drive, Owings Mills, Maryland 21117, U.S.A.
(410) 363-7148 • www.definitivetech.com

Definitive Redefines Architectural Sonic Perfection!



New UIW Reference In-Ceiling Speaker (UIW RCS II)

The new UIW RCS II is a significant addition to Definitive's Reference Architectural Series of loudspeakers designed to bring the performance of the finest free-standing speakers into custom flush-mount in-wall and in-ceiling installations. The Reference Ceiling Speaker (RCS II) is intended for use as an in-ceiling front main left, center or right channel speaker, as well as a rear or side surround speaker in custom installed home theater systems of the highest quality. In addition, it can be used as a superb left or right speaker in a high quality stereo music system.

"sounded great ... I was tremendously impressed"

— Fred Manteghian, *Ultimate AV*

Like our other Reference Architectural Series speakers (IWSUB 10/10, IWSUB Reference, RLS II, RLS III and RSS II), the RCS II is a totally non-resonant sealed mediate enclosure, which in this case easily and attractively installs flush into the ceiling in either new or existing construction. It features a D'Appolito driver array angled down and aimed at the listening area (two 5.25" cast-basket bass/midrange drivers and a 1" pure aluminum tweeter) as well as two 6.5" pressure-coupled planar low bass radiators. The precisely configured dual angled baffles incorporate a uniquely effective acoustic treatment which combines a computer-optimized ribbed surface with special dampening panels in order to achieve a linear uncolored sound combined with boxless three-dimensional imaging in which acoustic events seem to effortlessly float in space. In fact, the overall sonic performance of the RCS II is truly remarkable, combining breathtaking dynamics, engrossing musical subtlety and amazingly spacious imaging that totally belies its in-ceiling configuration.

"Sound so solid and clean you'll think it's coming from a higher power"

— Peter Pachal, *Sound & Vision*

In addition, the RCS II with its active driver/bass radiator combination achieves an extended low-frequency response, which is deep and dynamic with a smooth and controlled roll-off that allows it to seamlessly blend with a subwoofer with a quality that has never been previously achieved in an in-ceiling system. Of course, our in-wall UIW Sub 10/10 or UIW Sub Reference are a perfect complement to the RCS II for unmatched performance in a stealth home theater.

New UIW Reference Surround Speaker (UIW RSS II)

The UIW RSS II is another important new addition to Definitive's Reference Architectural Series. The RSS II is intended for rear or side surround use in 5, 6, 7, 8, 9 or more channel custom-install systems of the highest quality. Like the other Reference Architectural Series speakers, the RSS II is a totally non-resonant sealed mediate enclosure, which easily installs flush into walls or ceilings in either new or existing construction. It features a curved angle bipolar array, which is perfect for movie and music surround use because it provides an ideal combination of direct sound for specificity and localization and ambient sound for enhanced spaciousness.

The RSS II delivers uniquely enveloping surround performance totally immersing the listeners in a complete 360-degree soundstage. Walls seem to disappear and the listening room will be almost magically transformed into the location of the original sonic event. The curved aspect of the bipolar array further improves dispersion into the room. When installed in the ceiling, the direction in which the driver arrays face can be rotated 90 degrees in order to optimize the performance depending on the specific location of the speakers in relation to the seating area.

Each RSS II bipolar surround speaker contains two complete 3-way full-range systems for a total of 6 driver/radiators in each speaker. The RSS II's dynamic, spacious and uncolored sonic signature has been specifically engineered to blend perfectly with any of Definitive's loudspeakers whether freestanding, in-wall or in-ceiling for an amazing lifelike sonic experience.

RCS II Specifications: Cutout Size: 14³/₈" x 14³/₈". Outer Dimensions: 15¹/₂" x 15¹/₂". Depth: 5⁷/₈". Driver Complement: Two high-definition cast-basket 5¹/₄" bass/midrange drivers, two 6¹/₂" pressure-coupled low bass radiators, one 1" pure aluminum dome tweeter. Rec. Assoc. Amplification: 10 – 250 watts. Frequency Response: 22 Hz – 30 kHz.

RSS II Specifications: Cutout Size: 11⁵/₈" H x 9⁷/₈" W. Outer Dimensions: 12³/₄" H x 11" W. Depth: 3⁷/₈". Driver Complement: Two high-definition cast-basket 4¹/₂" bass/midrange drivers, two 4¹/₂" planar pressure-coupled low bass radiators, two 1" pure aluminum dome tweeters. Rec. Assoc. Amplification: 10 – 200 watts. Frequency Response: 26 Hz – 30 kHz.

RCS III & RSS III

Built-in-Ceiling Home Theater Sonic Perfection — Two New Solutions!

Meet two hot additions to the critically acclaimed Reference line of built-in home theater loudspeakers. The Reference Ceiling Speaker III (RCS III) and Reference Surround Speaker III are more compact, less expensive versions of the revolutionary RCS II and RSS II.

Like other models in the Reference Series, both new models use integrated non-resonant sealed Medite enclosures to deliver the tight, detailed bass and uncolored midrange of audiophile free-standing speakers. Six rotating dogleg clamps and beefy wood screws make the RCS and RSS speakers easy to install and provide secure, non-resonant mounting for ultimate audiophile performance free of vibrations and buzzes.

"[The RCS IIs are] jaw-droppingly good home theater speakers that just happen to live in the ceiling...destined to shift every paradigm there is regarding ceiling speakers."

— Chris Martens, *The Perfect Vision*

The RCS IIIs are in-ceiling front main, center, or surround speakers for built-in home theater installations. They feature two 4 1/2" cast basket active drivers and a Pure Aluminum tweeter on an angled baffle aimed at the listening area. Proprietary Wave Launch (patent pending) baffle geometry and acoustic treatment materials serve to create the illusion that the speakers are directly in front of the listener rather than up in the ceiling. The active drivers are pressure-coupled to two 5 1/4" racetrack-shaped Low-Bass Radiators for exceptional bass and perfect blending with free-standing or built-in subwoofers.

The RSS III is a dedicated bipolar surround speaker that may be ceiling or wall mounted in new or existing construction. Its bipolar array produces the ideal balance of direct sound for pinpoint localization and ambient sound for enveloping spaciousness. Each of the two arrays feature a 3 1/2" mid/bass driver pressure-coupled to a 3 1/2" Low-Bass Radiator with a 1" Pure Aluminum dome tweeter between the driver and radiator.

All models in the Reference Series share the same driver and tweeter technologies and can be mixed and matched to assemble a multi-channel system with seamless channel-to-channel imaging. Add a Definitive in-wall subwoofer for a complete audiophile-grade home theater system that is practically invisible!



RCS III



RSS III

RCS III SPECIFICATIONS

Flange Dimensions: 11 1/2" W x 11 1/2" H

Cutout Dimensions: 10 3/8" W x 10 3/8" H x 5 7/8" D

Driver Complement:

- Two 4 1/2" bass/mid drivers
- Two 5 1/4" x 4 1/8" pressure-driven low-bass radiators
- One 1" Pure Aluminum dome tweeter

Frequency Response: 30 Hz – 30 kHz

Nominal Impedance: Compatible with 4 – 8 ohm outputs

Recommended Amplification: 10 – 300 Watts/channel

Sensitivity: 92 dB

RSS III SPECIFICATIONS

Flange Dimensions: 9 7/16" W x 11" H

Cutout Dimensions: 8 5/16" W x 9 7/8" H x 3 7/8" D

Driver Complement:

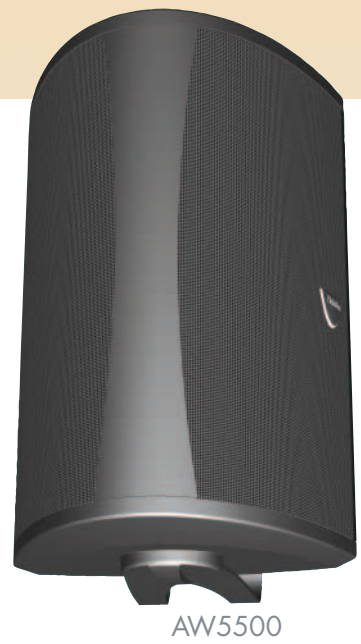
- Two 3 1/2" bass/mid drivers
- Two 3 1/2" pressure-driven low-bass radiators
- Two 1" Pure Aluminum dome tweeters

Frequency Response: 40 Hz – 30 kHz

Nominal Impedance: Compatible with 4 – 8 ohm outputs

Recommended Amplification: 10 – 300 Watts/channel

Sensitivity: 92 dB



AW5500



AW6500

- New 1" Pure Aluminum dome tweeter
- Balanced Double Surround System high definition driver with cast basket
- Racetrack Planar Low-Bass Radiator for exceptional bass output
- PolyStone non-resonant, air and water-tight enclosure
- Drainage channels (not pictured) prevent water buildup around input terminals

AW5500 & AW6500

Legendary Definitive Performance — Outdoors!

Now you can enjoy the incomparable sound of Definitive Technology anywhere around your home with the groundbreaking new AW5500 and AW6500 All-Weather loudspeakers. These technology-packed wonders feature high excursion active drivers pressure-coupled to racetrack-shaped Low-Bass Radiators to give you more than double the bass output while maintaining a weather-tight seal for ultimate placement flexibility, reliability, and performance.

With their fully sealed design, aluminum grilles, and rugged PolyStone enclosures, the AWs can be fully exposed to the elements and still reliably deliver their indoor speaker sound quality for years of outdoor listening enjoyment. Their integrated galvanized steel brackets and unique shape allow a full 360 degrees of rotation allowing the listener to orient the active drivers toward the listening area. Pointing the active driver baffle towards the listener while the Low-Bass Radiator side faces the wall or ground gives you the ideal balance of clear mids, extended highs, and thunderous bass even in the tough acoustic conditions of the great outdoors.

The AW5500 features a 5 1/4" active driver pressure-coupled to a 5" x 8" Low-Bass Radiator for a total bass radiating area greater than that of an 8" conventional woofer, while the AW6500's 6 1/2" driver and 5 1/2" x 10" Low-Bass Radiator exceeds the radiating area of a 10" woofer — imagine all that bass from speakers small enough to unobtrusively place anywhere. Both AW models use Definitive's trademark Pure Aluminum dome tweeter for unexcelled high frequency extension and detail.

Now you can have it all — the great sound of Definitive indoor speakers on the patio, deck, garden, or in the sauna.

AW5500 SPECIFICATIONS

- Dimensions (with wall bracket):** 12 1/16" L x 7 3/8" W x 8 3/16" D
- Driver Complement:**
 - One 5 1/4" BDSS cast basket bass/mid driver
 - One 5" x 8" pressure-driven Low-Bass Radiator
 - One 1" Pure Aluminum dome tweeter
- Inputs:** Gold-plated 5-way binding posts
- Frequency Response:** 45 Hz – 30 kHz
- Nominal Impedance:** Compatible with 4 – 8 ohm outputs
- Recommended Amplification:** 10 – 175 Watts/channel
- Sensitivity:** 91 dB

AW6500 SPECIFICATIONS

- Dimensions (with wall bracket):** 14 7/16" L x 8 7/8" W x 9 1/4" D
- Driver Complement:**
 - One 6 1/2" BDSS cast basket bass/mid driver
 - One 5 1/2" x 10" pressure-driven Low-Bass Radiator
 - One 1" Pure Aluminum dome tweeter
- Inputs:** Gold-plated 5-way binding posts
- Frequency Response:** 40 Hz – 30 kHz
- Nominal Impedance:** Compatible with 4 – 8 ohm outputs
- Recommended Amplification:** 10 – 200 Watts/channel
- Sensitivity:** 92 dB

Definitive Technology®
The Leader in High-Performance Loudspeakers®

11433 Cronridge Drive, Owings Mills, Maryland 21117, U.S.A.
(410) 363-7148 • www.definitivetech.com