



Ci 100QR



**AVAILABLE AT
DIGITAL CINEMA**

Information Sheet



KEF's full range Ci130.2FS and Ci130.2FR are serious speakers at an affordable price. The Ci130 is well suited for the high quality music and speech reinforcement applications where good hi-fi performance is required. Sharing KEF's versatility of flush mounting square speakers in walls or round speakers in the ceiling with ease of installation, the Ci130 is at home either installed indoors, even in bathrooms, or outside (under eaves).

There is virtually no limit to the design possibilities that these budget speakers can offer. If you want the custom installation benefits without breaking the bank look to the Ci130.2FS and Ci130.2FR.

Features and Benefits:

The Ci130.2FS and Ci130.2FR combine 50W power handling and 87dB sensitivity. A 130mm (5 1/4") full range driver providing excellent power handling and smooth response.

The Ci130.2FR is supplied with an acoustic steel back can.

The bezel and grille can be painted or covered by fabric to match the interior décor.

Ci series
custom installation speakers

KEF Audio (UK), Eccleston Road, Tovil, Maidstone, Kent, ME15 6QP U.K. Telephone: + 44 (0) 1622 672261. Fax: + 44 (0) 1622 750653

KEF America, 10 Timber Lane, Marlboro, New Jersey, 07746 USA. Telephone: + 1 732 683 2356. Fax: + 1 732 683 2358

GP Acoustics GmbH, Heinrichstraße 51, D-44536 Lünen, Deutschland. Telephone: +49 (0) 231 9860-320. Fax: +49 (0) 231 9860-330.

www.kef.com

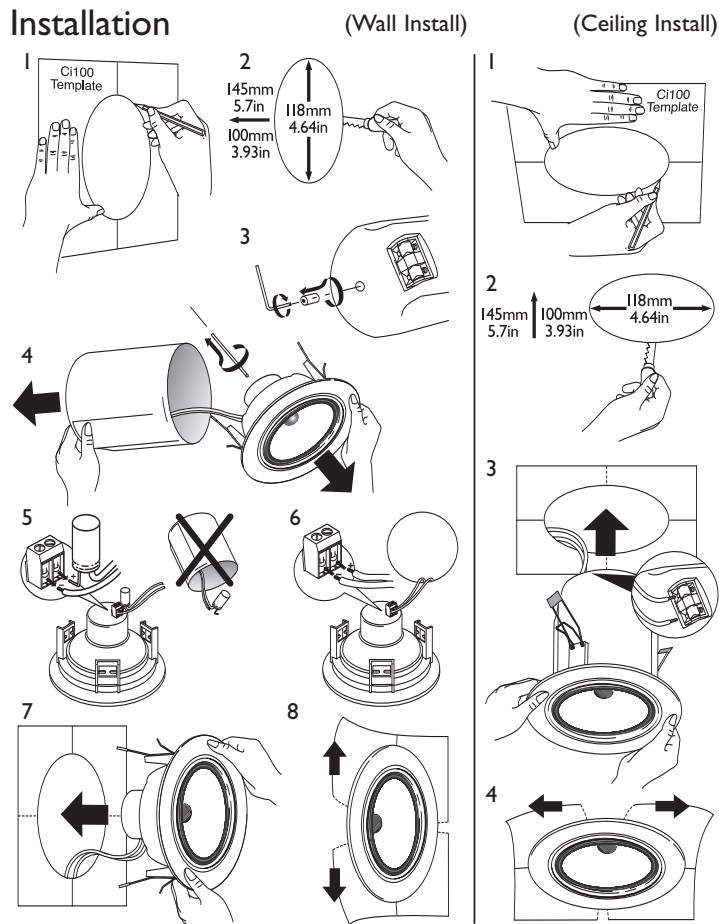
www.kefamerica.com

www.kefaudio.de



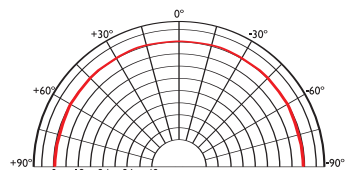
Ci 100QR

Installation

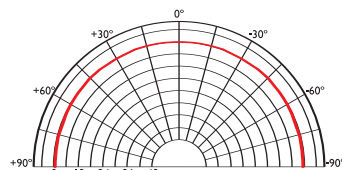


Polar graphs

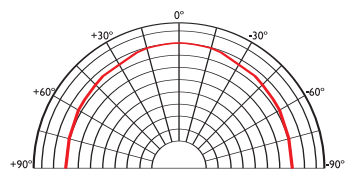
500Hz



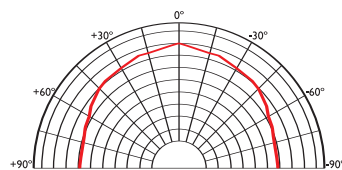
1kHz



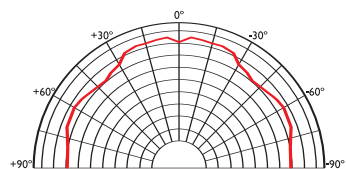
2kHz



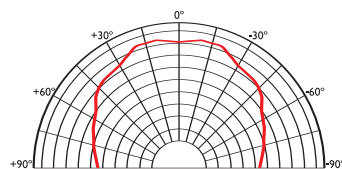
4kHz



8kHz



16kHz



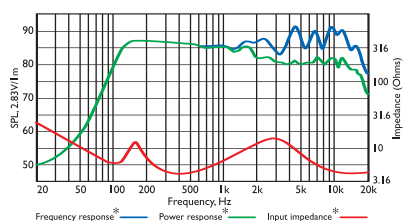
Architectural specifications:

The Ci Series Ci130.2FS and Ci130.2FR comprise a 130mm full range speaker. Performance should meet or exceed the following criteria: frequency response 1 metre on-axis with swept sinewave shall be 50Hz to 16kHz FS and 100Hz to 16kHz FR, system sensitivity shall be at least 87dB for 2.83V@1m.

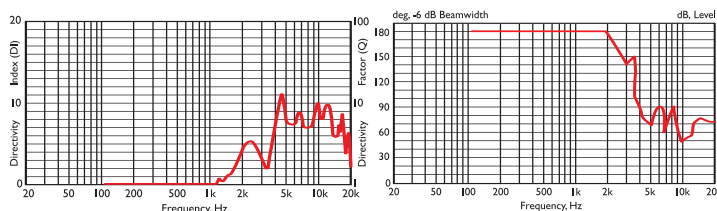
The driver impedance and maximum power handling shall be 50W at 8 ohms. The Ci Series Ci130.2FS and Ci130.2FR is best suited where high quality music and speech reinforcement applications require hi-fi performance such as:

- Multi Room systems.
- Lounges, Bars, Boutiques.
- Boardrooms & Offices.
- Airports, Convention Centres, Hotels.
- Live Theatre/Concert Hall fill-in.
- Houses of Worship.

Frequency / Power response, Input impedance



Directivity Index / Beamwidth



Specifications

Frequency range	110Hz - 27kHz*	80Hz - 27kHz**
Sensitivity (2.83v @ 1m)	88dB	
Rec. amplifier power	10 - 50W	
Nominal Impedance	4Ω (min. 4.1Ω)	
Crossover Frequency	3kHz	

*With back can **Without back can

Enclosure material	ABS
Terminals	spring terminals up to Ø2.5mm (0.1") conductor
Dimensions (Ø x depth)	Ø127 x 153 mm, 5 x 6 in.* Ø127 x 100 mm, 5 x 4 in.**
Net weight	0.8kg (1.76lbs)* 0.7kg (1.54lbs)**