



KEF LOUDSPEAKERS

DIGITAL
CINEMA

AVAILABLE AT
DIGITAL CINEMA

Ci160.2FS/FR

Information Sheet



The full range Ci160.2FS and Ci160.2FR share with the smaller Ci130FS/FR, KEF's ideal to produce serious custom installation speakers at an affordable yet competitive price.

They are perfectly suited for the high quality music and speech reinforcement applications where good hi-fi performance is required.

Add to that the versatility of flush mounting the square speaker in walls or the round speaker in the ceiling.

Easy and quick installation is provided by KEF's simple and ingenious screw down clamping system.

Designed with moisture-resistant fixings allowing placement in the harshest environments such as bathrooms or even outside (under eaves).

There is virtually no limit to the design possibilities that these custom installation speakers can offer.

The full range Ci160.2FS and Ci160.2FR. Economic on price, never on performance.

Features and Benefits:

Ci160.2FS and Ci160.2FR combines 100W power handling and 89dB sensitivity, for a maximum output of 108dB.

A 160mm (6½") full range driver provides smooth high frequency output.

The bezel and grille can be painted or covered by fabric to match the interior décor.

Ci series
custom installation speakers

KEF®

KEF Audio (UK), Eccleston Road, Tovil, Maidstone, Kent, ME15 6QP U.K. Telephone: + 44 (0) 1622 672261. Fax: + 44 (0) 1622 750653

www.kef.com

KEF America, 10 Timber Lane, Marlboro, New Jersey, 07746 USA. Telephone: + 1 732 683 2356. Fax: + 1 732 683 2358

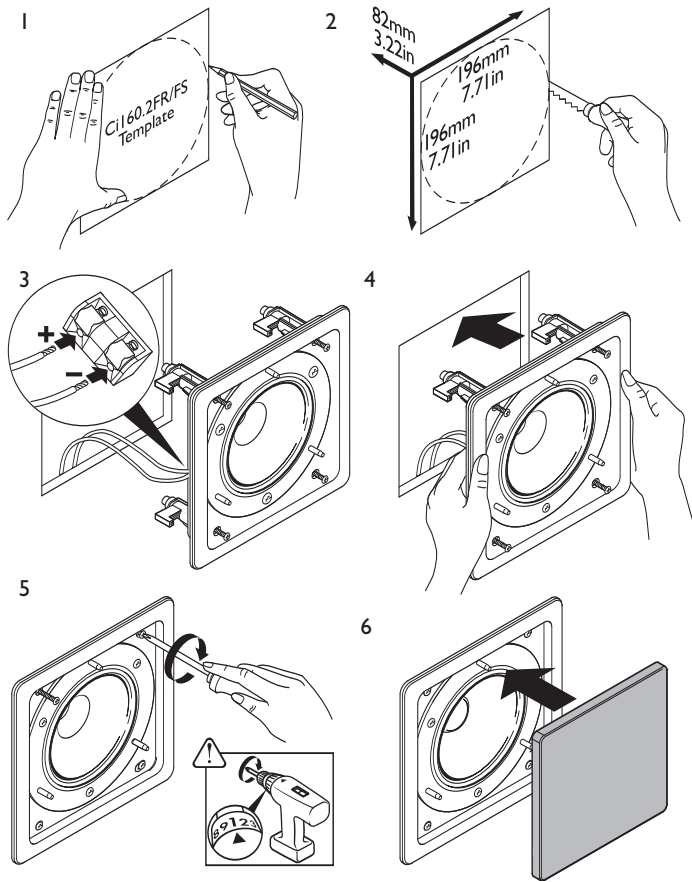
www.kefamerica.com

GP Acoustics GmbH, Heinrichstraße 51, D-44536 Lünen, Deutschland. Telephone: +49 (0) 231 9860-320. Fax: +49 (0) 231 9860-330.

www.kefaudio.de

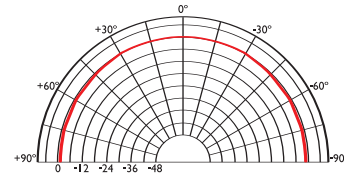
Ci160.2FS/FR

Installation

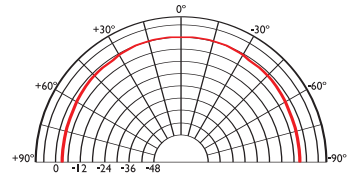


Polar graphs

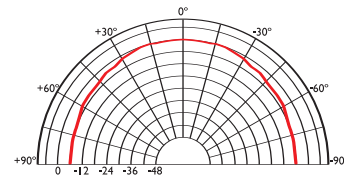
500Hz



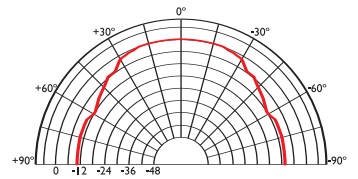
1kHz



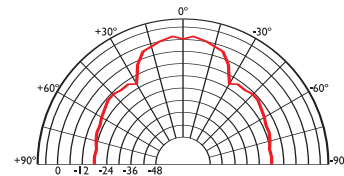
2kHz



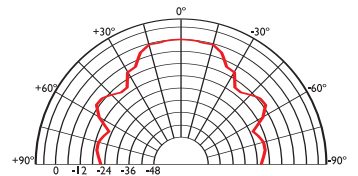
4kHz



8kHz



16kHz



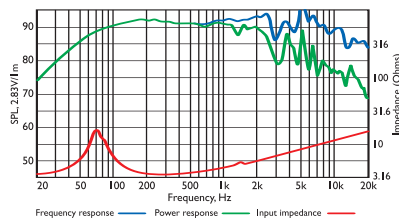
Architectural specifications:

The Ci Series Ci160.2FS and Ci160.2FR comprise a 160mm full range speaker. Performance should meet or exceed the following criteria: frequency response 1 metre on-axis with swept sinewave shall be 60Hz to 16kHz, system sensitivity shall

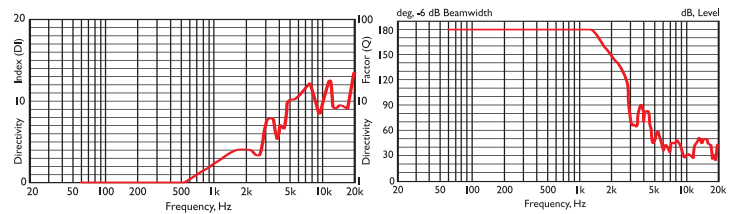
be at least 89dB for 2.83V@1m. The driver impedance and maximum power handling shall be 100W at 4 ohms. The Ci Series Ci160.2FS and Ci160.2FR is best suited where high quality music and speech reinforcement applications require hi-fi performance such as:

- Multi Room systems.
- Lounges, Bars, Boutiques.
- Boardrooms & Offices.
- Airports, Convention Centres, Hotels.
- Live Theatre/Concert Hall fill-in.
- Houses of Worship.

Frequency / Power response, Input impedance



Directivity Index / Beamwidth



Specifications

Frequency range	60Hz - 16kHz
Sensitivity (2.83v @ 1m)	89dB
Rec. amplifier power	10 - 100W
Nominal Impedance	4Ω (min. 3.5Ω)
Crossover Frequency	N/A

Enclosure material	N/A
Terminals	spring terminals up to Ø2.5mm (0.1") conductor
Dimensions (H x W x D)	220 x 220 x 89 mm, 8.7 x 8.7 x 3.5 in.
Net weight	1.3kg (2.8lbs)