



KEF UNI-Q® LOUDSPEAKERS

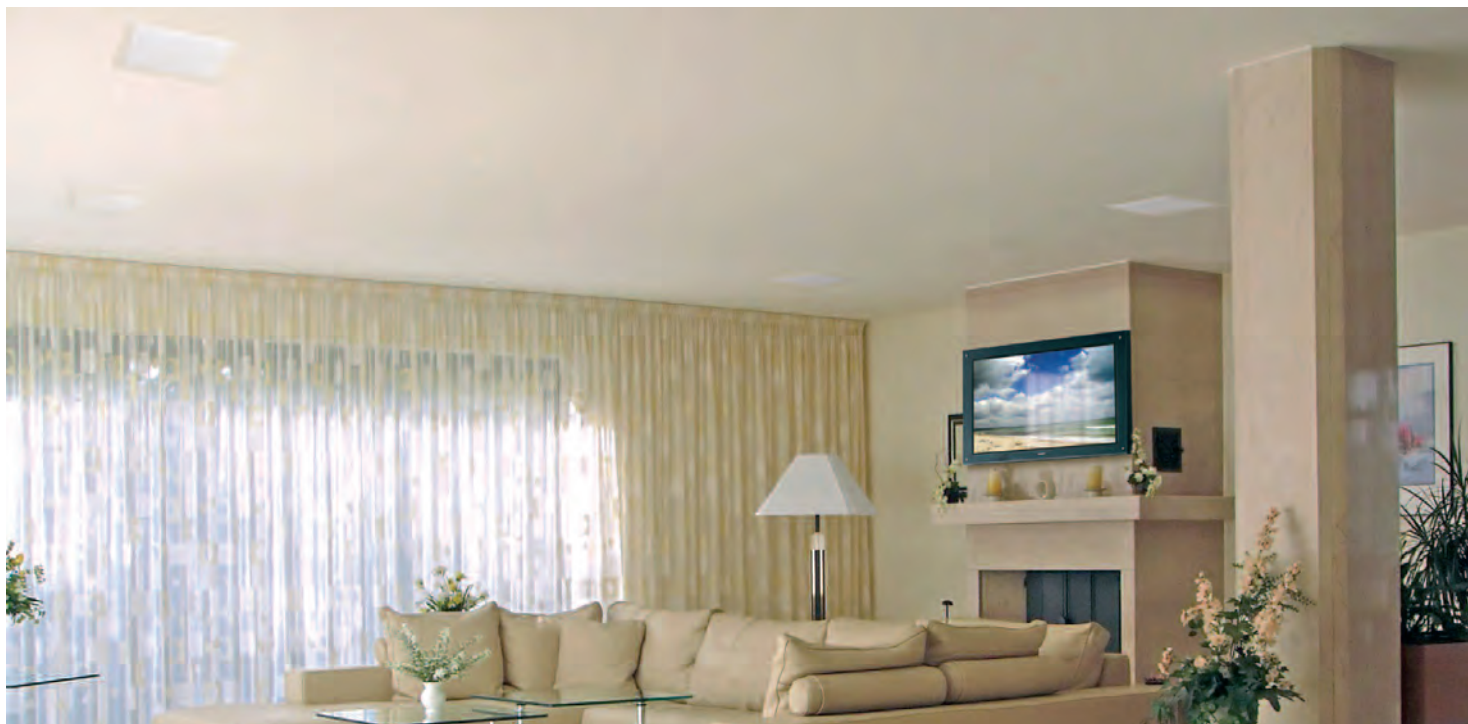


Ci200.3QS/QR



**AVAILABLE AT
DIGITAL CINEMA**

Information Sheet



These are the Ci200.3QS and Ci200.3QR flagship ceiling speakers offering outstanding performance. Audiophile quality sound is derived from KEF's Uni-Q® driver array technology, providing your room with an expansive soundscape, excellent bass extension and so creating the perfect sound stage. Deciding whether to place the Ci200.3QS and Ci200.3QR in the walls or ceiling has never been more simple. Thanks to KEF's simple and ingenious screw down clamping system you'll find them easy and quick to install.

Designed with moisture-resistant fixings allowing placement in the harshest environments such as bathrooms or kitchens.

The Ci200.3QS and Ci200.3QR offer excellent quality with no sacrifice.

Features and Benefits:

The new slender bezel and contemporary grille design of the new Ci200.3 models combine to make the finished installation less intrusive than it's predecessors.

The Uni-Q array features a new 25 mm (1 in.) aluminium dome high frequency unit mounted coincidentally into a new 200mm (8 in.) polypropylene bass/mid range unit. A new crossover design provides the new Ci200.3 models with superb off-axis dispersion characteristics.

Like all KEF Ci in-wall products, the bezel and grille can be painted to match the interior décor.

Ci series
custom installation speakers

KEF Audio (UK), Eccleston Road, Tovil, Maidstone, Kent, ME15 6QP U.K. Telephone: + 44 (0) 1622 672261. Fax: + 44 (0) 1622 750653

KEF America, 10 Timber Lane, Marlboro, New Jersey, 07746 USA. Telephone: + 1 732 683 2356. Fax: + 1 732 683 2358

GP Acoustics GmbH, Heinrichstraße 51, D-44536 Lünen, Deutschland. Telephone: +49 (0) 231 9860-320. Fax: +49 (0) 231 9860-330.

KEF®

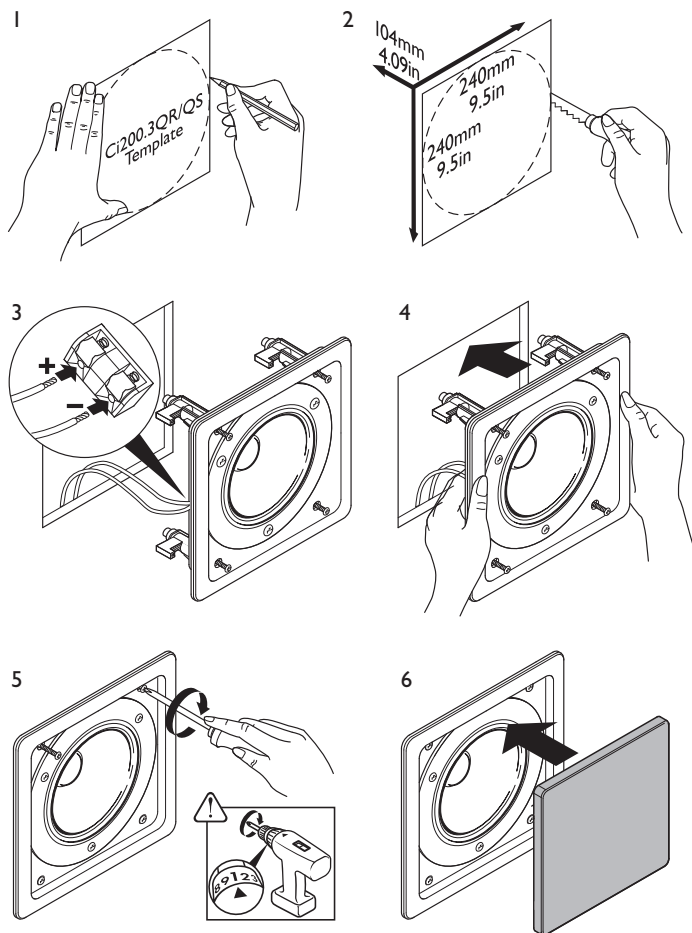
www.kef.com

www.kefamerica.com

www.kefaudio.de

Ci200.3QS/QR

Installation

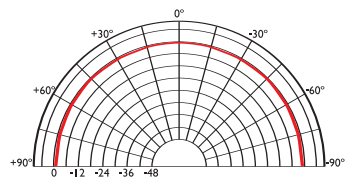


The Ci Series Ci200.3QS and Ci200.3QR is best suited where high quality music and speech reinforcement applications require hi-fi performance such as:

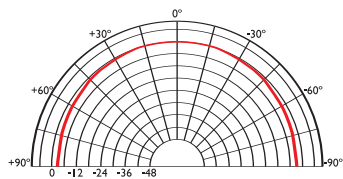
- Multi Room systems.
- Home Theatre systems.
- Lounges, Bars, Boutiques.
- Boardrooms & Offices.
- Airports, Convention Centres, Hotels.

Polar graphs

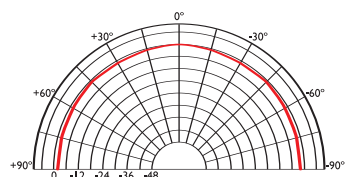
500Hz



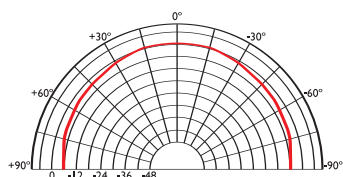
1kHz



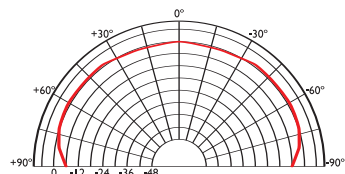
2kHz



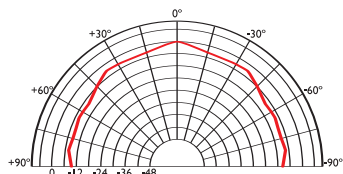
4kHz



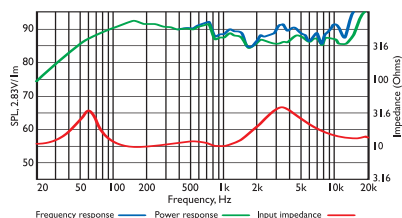
8kHz



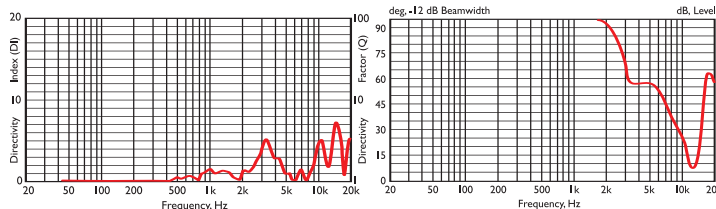
16kHz



Frequency / Power response, Input impedance



Directivity Index / Beamwidth



Specifications

Frequency range $\pm 3\text{dB}$	43Hz - 20kHz
Sensitivity (2.83v @ 1m)	89dB
Rec. amplifier power	10 - 100 W
nominal Impedance	6 Ω (min. 3,9 Ω)
Crossover Frequency	1.8kHz

Enclosure material	N/A
Terminals	spring terminals up to $\varnothing 2.5\text{mm}$ (0.1")*
Dimensions (H x W x D)	275 x 275 x 110mm QS, 275 x 110mm QR
Net weight	2.1kg