



KEF LOUDSPEAKERS



AVAILABLE AT  
DIGITAL CINEMA

# Ci500AW

Information Sheet



For a serious all-weather loudspeaker look to KEF's Ci Series Ci500AW. In the summerhouse or by the pool, this is a complete all-rounder, featuring an ABR box design with an integral, swivelling mounting bracket. Along with the drivers, both the terminals and mounting bracket are weather-resistant,

making positioning of this loudspeaker, even in the harshest environments like patios or even ocean-going yachts, extremely versatile. Imagine KEF acoustic quality in outdoor sound and think of the Ci500AW delivering a solid, richly detailed sound virtually anywhere you care to place it.

#### Features and Benefits:

The 2-way Ci500AW combines 70W power handling and 87dB sensitivity for a maximum output of 105dB.

A 130mm (5¼") polypropylene bass/mid driver working in conjunction with an Auxiliary Bass Radiator (ABR) for increased low frequency output, is partnered by a 25mm (1") soft dome tweeter.

The white, moulded ABS enclosure and stainless steel grille are easily paintable.

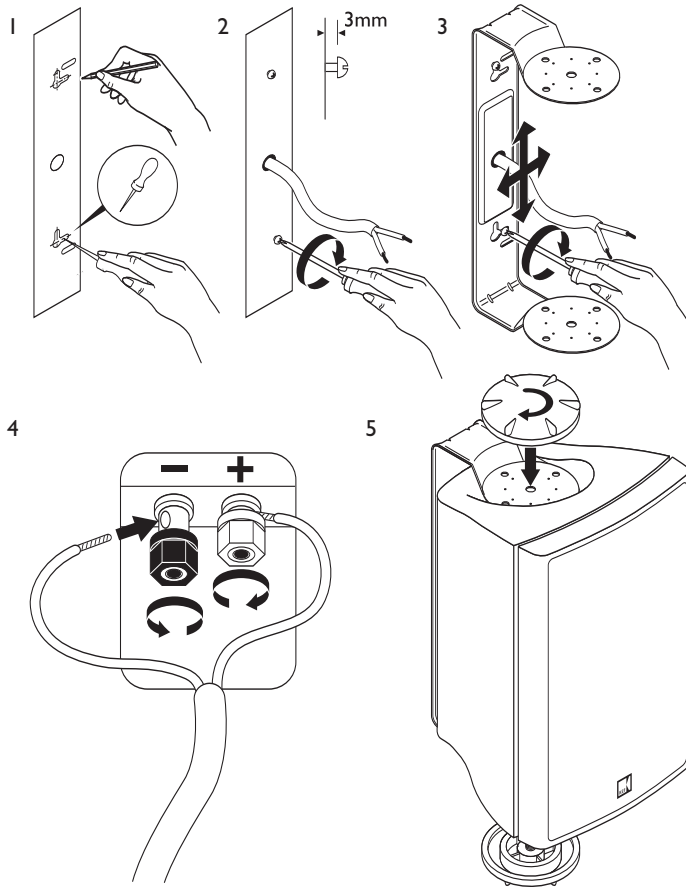
**Ci** series  
custom installation speakers

KEF Audio (UK), Eccleston Road, Tovil, Maidstone, Kent, ME15 6QP U.K. Telephone: + 44 (0) 1622 672261. Fax: + 44 (0) 1622 750653 [www.kef.com](http://www.kef.com)  
KEF America, 10 Timber Lane, Marlboro, New Jersey, 07746 USA. Telephone: + 1 732 683 2356. Fax: + 1 732 683 2358 [www.kefamerica.com](http://www.kefamerica.com)  
GP Acoustics GmbH, Heinrichstraße 51, D-44536 Lünen, Deutschland. Telephone: +49 (0) 231 9860-320. Fax: +49 (0) 231 9860-330. [www.kefaudio.de](http://www.kefaudio.de)

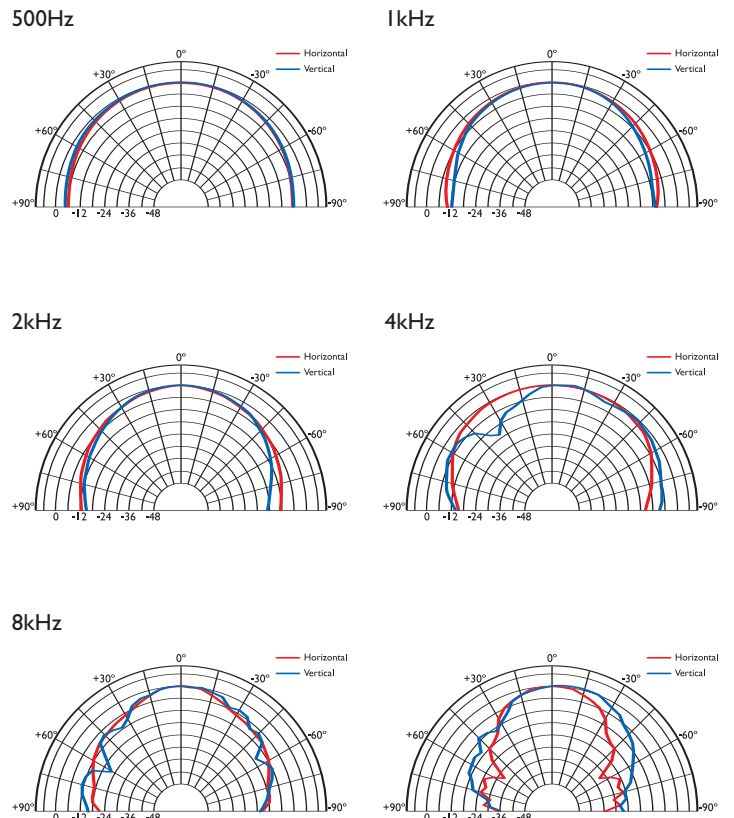
**KEF**®

# Ci500AW

## Installation



## Polar graphs



## Architectural specifications:

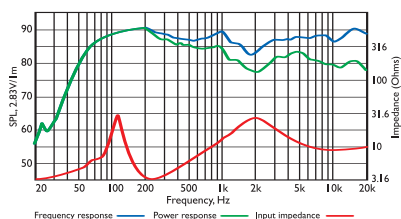
The Ci Series Ci500AW comprise a 25mm soft dome ferrofluid cooled tweeter with 130mm polypropylene bass/mid unit and Auxiliary Bass Radiator. Performance should meet or exceed the following criteria: frequency response 1 metre on-axis with swept sinewave shall

be 60Hz to 20 kHz, sensitivity shall be at least 87dB for 2.83V@1m.

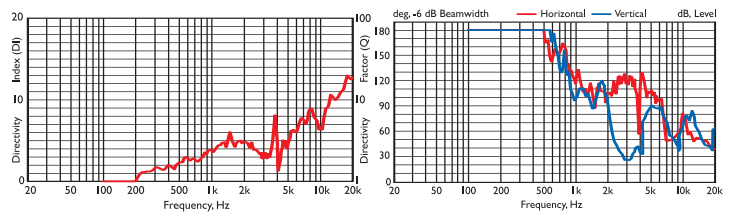
The impedance and maximum power shall be 70W at 4 ohms. The Ci Series Ci500AW is best suited where high quality music and speech reinforcement applications require hi-fi performance in all weather such as:

- Patios.
- Maritime and Sailing.
- Zoos.
- Theme Parks.
- Sports Arenas.

## Frequency / Power response, Input impedance



## Directivity Index / Beamwidth



## Specifications

Frequency range	60Hz - 20kHz
Sensitivity (2.83v @ 1m)	87dB
Rec. amplifier power	10 - 70W
Nominal Impedance	4Ω (min. 3.2Ω)
Crossover Frequency	3kHz

Enclosure material	Polycarbonate
Terminals	binding posts up to Ø5mm (0.2") conductor
Dimensions (H x W x D)	290 x 180 x 173 mm, 11.5 x 7.1 x 6.9 in.
Net weight	3.5kg (7.7lbs)