



There has never been a better time to discover the joy of being able to hear all the detail in your favourite songs. KEF's six decades of experience in acoustic excellence combined with constant innovation and the development of wireless technology has led to the creation of LSX II; a compact wireless Hi-Fi system that delivers pure, accurate sound, but with the compatibility and convenience of the very best wireless technology.

Much more than a simple upgrade from the award-winning original, LSX II combines class-leading sound with the all-encompassing W2 wireless platform from LS50 Wireless II. Connectivity options are further enhanced by the addition of both HDMI and USB-C, making this an ideal companion for both TV and desktop computer systems.

LSX II delivers room-filling, natural, accurate sound from any source thanks to the knowledge and experience of KEF's talented engineers and the iconic Uni-Q driver array. Plus it has a contemporary design courtesy of famed industrial designer Michael Young, and is available in a choice of five stylish finishes.

## CONNECTIVITY

### Play all the music in the world

At the digital heart of the LSX II sits the same cutting-edge W2 wireless platform that drives the mighty LS50 Wireless II. This ensures that no matter how you like to listen to music, you can do so with the minimum of fuss and in pristine sound quality.

The KEF Connect app lets you stream Amazon Music, Qobuz, Tidal, Deezer, Internet Radio stations and podcasts. Apple AirPlay 2 and Google Chromecast seamlessly stream audio from compatible devices, whilst Bluetooth expands the options even further. You can use native apps to stream directly from Spotify Connect, Tidal and QPlay, and it is Roon Ready. When using Airplay 2, Chromecast or Roon you can stream to multiple speakers, so you can play music all over your house.

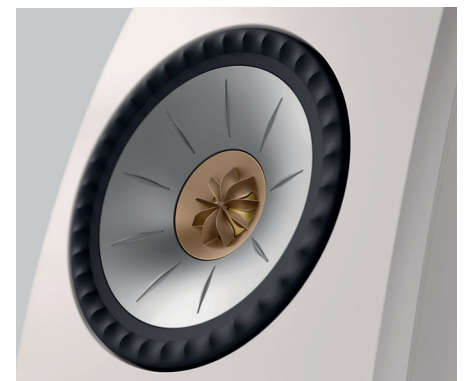
If that wasn't enough, LSX II can also play your own private music collection from a compatible NAS drive or music server. Plus, audiophiles are covered with extensive file support up to 24bit/384kHz (PCM), DSD, and full MQA rendering.

### Plug and play to TV and laptop

Alongside Wi-Fi and Bluetooth, LSX II also boasts a comprehensive collection of wired connections. These include HDMI ARC for seamless control using TV remote and a high-quality USB-C input which makes LSX II the perfect desktop system with your computer. There are also connections for your turntable, CD player, games console, and many other devices. And, if you demand your movies and music come with some extra bottom end, there's a dedicated output so you can connect a KEF subwoofer for the bass you crave.

## Summary of features

- Plays all major music services and supports all major audio formats
- DSD, MQA and PCM up to 24bit/384kHz
- Comprehensive connectivity for your TV, laptop and any other equipment: USB-C, HDMI ARC, Analogue input, subwoofer output
- 11<sup>th</sup> Generation Uni-Q driver array for accurate, pristine sound
- Music Integrity Engine for rich, full-bodied sound
- System power: LF 70W class D, HF 30W class D, Max. SPL:102dB
- Intuitive on-boarding with user-centred features
- Personalised listening experience via KEF Connect App
- Design by Michael Young
- Optimised cabinet design for best acoustic performance
- Mounting inserts to secure on P1 desk pad, S1 floor stand and B1 wall bracket
- Available in 5 finishes: Carbon Black, Mineral White, Cobalt Blue, Lava Red and Soundwave by Terence Conran Edition



## PERFORMANCE

### High-Fidelity sound

The beauty of the two-speaker box approach is that music is given space to breathe and develop, creating a three-dimensional soundstage. The speakers appear to disappear, leaving you to enjoy the immersive performance that unfolds in front of you, drawing you into the experience.

Each LSX II speaker uses a version of KEF 11<sup>th</sup> generation Uni-Q driver array specially designed for this loudspeaker. This signature technology acts as a point source, where the tweeter is placed at the precise acoustic centre of the woofer, recreating how sound is produced naturally. This design eliminates the traditional, tiny 'sweet spot,' instead delivering accurate, pristine sound to all listeners.

LSX II has a combined 200 Watts of system power. Both the tweeter and woofer are powered by their own dedicated amplifier to deliver room-filling sound in such compact cabinets.

Performance is further enhanced from the award-winning original by the Music Integrity Engine. The cutting-edge collection of bespoke Digital Signal Processing algorithms has just got an update. Optimised for the Uni-Q driver, the Music Integrity Engine enables LSX II to deliver a perfectly timed performance, for better clarity and a tighter, more accurate sound.



## USER-CENTRED

### User-focused experience

The KEF Connect app walks you through the set-up and controls the system and playback navigation, with intuitive sound settings so you can adjust LSX II to best suit your room.

With its powerful Room EQ DSP, LSX II can be fine-tuned to your room and personal taste without the need for a degree in acoustic engineering. 'Normal' mode is designed to talk you through the process with easy questions - all you might need is a tape measure. For easy integration of a KEF subwoofer with LSX II, Room EQ includes subwoofer pre-sets for the best possible system performance.

LSX II also comes with a host of other user-friendly features including volume settings, sensitivity adjustments, and the ability to select a source to wake it up when it comes on.

You can choose to connect the speakers wirelessly with 24bit/48kHz resolution for a cable-free setup, or with the supplied cable for 24bit/96kHz resolution.

## DESIGN

### Sound by KEF. Design by Michael Young.

The aesthetic design of LSX II comes courtesy of Michael Young, one of the leading lights in the world of industrial design. Famed for his sophisticated take on minimalism, Young's signature is a smart, pared down aesthetic that perfectly suits LSX II's requirement to deliver pristine, accurate sound while also looking incredible. Every single aspect of LSX II is carefully considered, with an elegant rear control panel and subtle design accents such as colour-matched finishes on the Uni-Q driver and ports. LSX II also has neat mounting inserts, for secure placement on the P1 desk pad, S1 floor stand or B1 wall bracket.

### Statement finishes

LSX II is available in a choice of five finishes: Mineral White and Lava Red models finished with satin and gloss spray, while Carbon Black and Cobalt Blue are clad in a specially designed fabric from Danish contemporary textile designer, Kvadrat. The Soundwave by Terence Conran Edition sees the 'soundwave' pattern woven into the same unique fabric for a true statement of the meeting of acoustics and design.

## IN THE BOX

- LSX II
- Power cords
- Interspeaker cable
- Remote control
- Quick Start Guide, warranty and safety information





Carbon Black

Mineral White

Cobalt Blue

Lava Red

Soundwave  
by Terence Conran Edition

## Specifications

Model	LSX II
Drive units	Uni-Q driver array: HF: 19mm (0.75in.) aluminium dome LF/MF: 115mm (4.5in.) magnesium/aluminium alloy cone
Frequency range (-6dB) measured at 85dB/1m	49Hz – 47kHz *Depends on EQ settings
Frequency response (±3dB) measured at 85dB/1m	54Hz – 28kHz *Depends on EQ settings
Amplifier output power (per speaker)	LF: 70W HF: 30W
Amplifier class (per speaker)	LF: Class D HF: Class D
Max SPL measured at 1m	102 dB
Wireless streaming features	AirPlay 2 Google Chromecast ROON Ready UPnP Compatible Bluetooth 4.2
Streaming services	Spotify via Spotify Connect Tidal via Tidal Connect Amazon Music Qobuz Deezer QQ Music via QPlay Internet Radio Podcast *Depends on services availability in different countries
Source resolution	Network up to 384kHz/24bit Optical up to 96kHz/24bit USB Type C up to 96kHz/24bit HDMI up to 48kHz/16bit *Depends on source resolution
Interspeaker connection	Wireless: all sources resampled to 48kHz/24bit PCM Wired: all sources resampled to 96kHz/24bit PCM
Supported format (network)	MQA, DSD, FLAC, WAV, AIFF, ALAC, AAC, WMA, MP3, M4A, LPCM and Ogg Vorbis
Dimensions (HWD per speaker)	240 × 155 × 180 mm (9.5 × 6.1 × 7.1 in.)
Weight (per set)	7.2kg (15.6lbs)
Power input	100 – 240VAC 50/60Hz
Power consumption	200W (operating power) <2.0W (standby power)

	Primary speaker	Secondary speaker
Inputs	HDMI ARC TOSLINK Optical USB Type C Analog 3.5mm Auxiliary RJ45 Ethernet (network) RJ45 Ethernet (interspeaker)	RJ45 Ethernet (interspeaker)
Output	RCA Subwoofer output	-
Wi-Fi network standard	IEEE 802.11a/b/g/n/ac IPv4, IPv6	-
Wi-Fi network frequency band	Dual-band 2.4 GHz / 5 GHz	-

Visit: [KEF.com](https://www.kef.com) for more about KEF and its products.

KEF reserves the right, in line with continuing research and development, to amend or change specifications. E&OE.