

COMPACT
MULTIPLE ANGLE
8" TWO-WAY
SPEAKER SYSTEM

Klipsch®

The KI-172 is a compact, two-way, high performance loudspeaker with sides slanted at 65° and 45°. Designed to be installed where placement at an angle is required and space is limited, the KI-172 is perfect for wall, ceiling or under-balcony mounting in theaters, churches, schools and clubs, or for slanted floor or shelf monitor use near altars and podiums, or in board and meeting rooms.

The 3/4" furniture grade plywood enclosure uses dado "lock-joint" and rabbet construction on CNC-fabricated panels to ensure resonance-free response and long-term reliability.

The internal high-current passive crossover features the proprietary high-power thermal overload KLIP-circuit, which limits potential damage to the high-frequency driver.

Standard five-way binding posts provide connections from full-range signal sources up to 100 watts.

Top and bottom attachments for the SB-102 "U"-shaped bracket, plus pre-drilled holes for Omnimount® 100 Series adjustable brackets, provide flexible mounting and positioning capabilities.

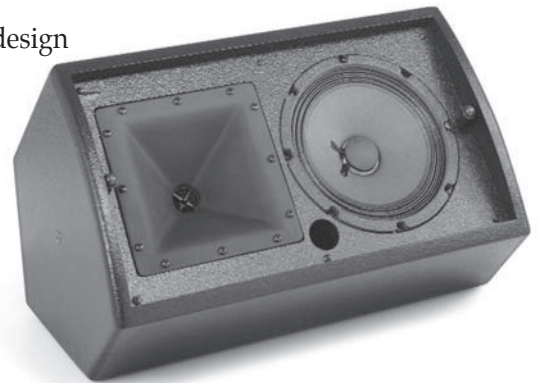
The dual texture-coated, radiused enclosure and perforated metal grille add structural integrity and provide for weather and corrosion resistance. Available in black, white or paintable raw plywood, the KI-172 is covered by the Klipsch limited five-year warranty.

KI-172



AVAILABLE AT
DIGITAL CINEMA

- Multiple angle 45° and 65° asymmetrical design
- High power 8" woofer and 1" titanium diaphragm HF compression driver
- 90° X 90° modified Tractrix® Horn
- 3/4" furniture grade plywood enclosure
- Flexible mounting options for difficult installations
- KLIP-circuit HF driver protection device



Specifications

FREQUENCY RESPONSE ¹	70Hz-17kHz±4dB, -10dB 59Hz (see graph)
POWER HANDLING ²	100 Watts (21.2V)
MAXIMUM CONTINUOUS OUTPUT ³	113dB
DISPERSION ANGLE	90° Horizontal X 90° Vertical (see graph)
DIRECTIVITY	7dB (see graph)
SENSITIVITY ⁴	96dB
NOMINAL IMPEDANCE	8 Ohms, 4.5 Ohms at 8.5kHz (see graph)
CROSSOVER FREQUENCY	3kHz
	12dB/Octave on LF
	18dB/Octave on HF
OVERLOAD PROTECTION	KLIP Overload Tweeter Protection Circuit
COMPONENTS	K-8-E 8" Woofer
	K-103-TI-KP 1" Titanium Diaphragm Compression Driver
ENCLOSURE MATERIAL	3/4" Furniture Grade Plywood
INPUT CONNECTIONS	Five-way Binding Post
DEPTH	11.25" (28.575cm)
HEIGHT	18.813" (47.785cm)
WIDTH	11.313" (28.735cm) 45/65° Asymmetrical Angled Box
NET WEIGHT	22 lbs. (9.988kg)
SHIPPING WEIGHT	27 lbs. (12.258kg)
FINISHES	Black, White and Raw Plywood
ACCESSORIES	SB-102 Mounting Bracket

¹3M, Half-space anechoic

²AES Standard, continuous pink noise 50Hz-10kHz, 6dB peaks

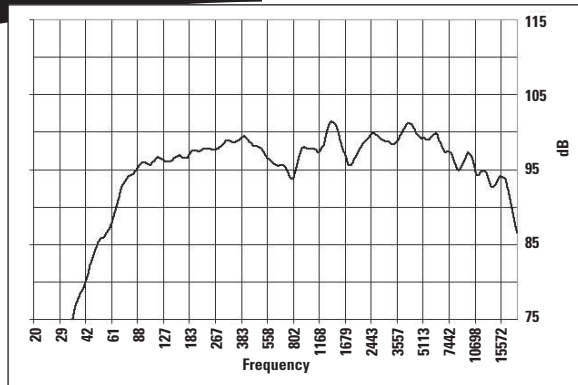
³At 1M at power handling power input

⁴SPL at 1M, half-space anechoic with 2.83V input

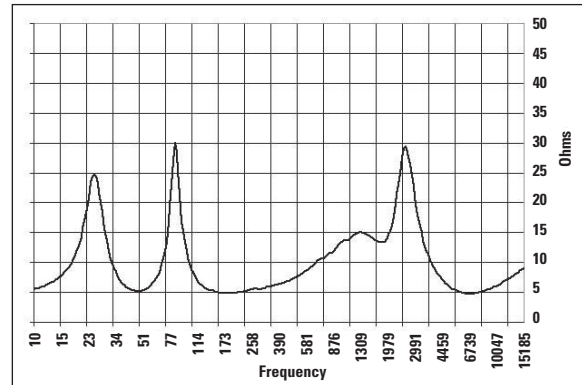
KI-172

COMPACT MULTIPLE ANGLE 8" TWO-WAY SPEAKER SYSTEM

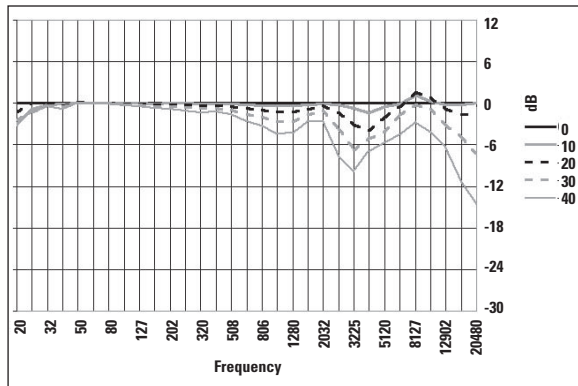
Frequency Response



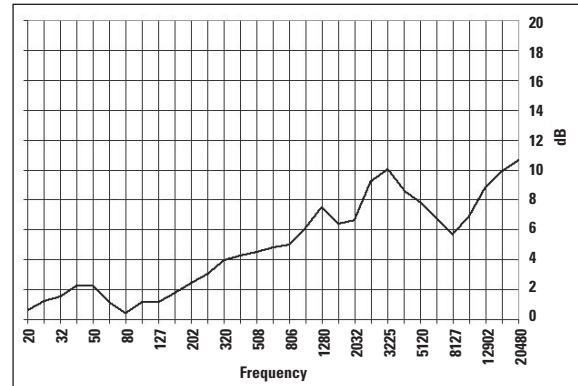
Impedance



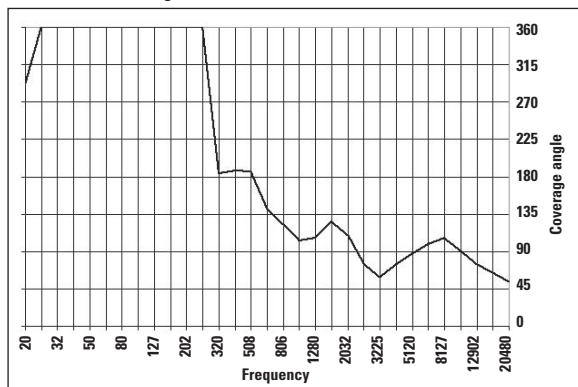
Horizontal Off-Axis Transfer Function



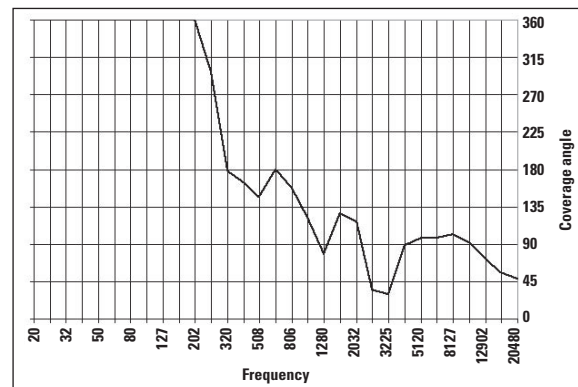
Directivity Index



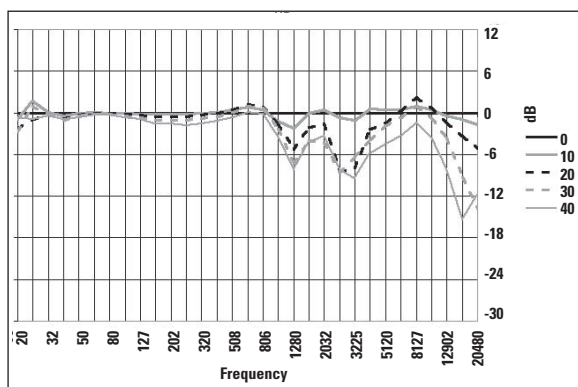
Horizontal Coverage (-6dB)



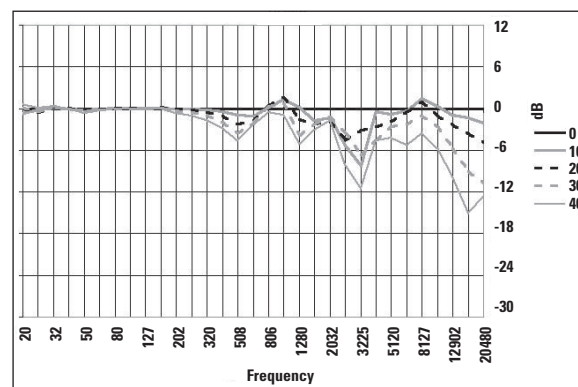
Vertical Coverage (-6dB)



Vertical Off-Axis Transfer Function UP

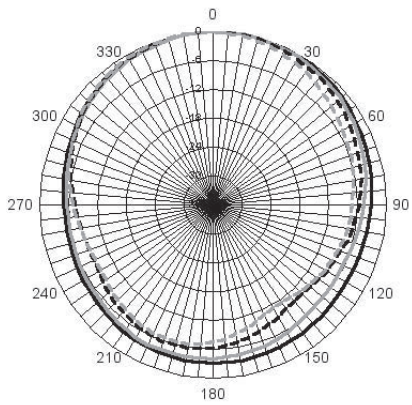


Vertical Off-Axis Function DOWN

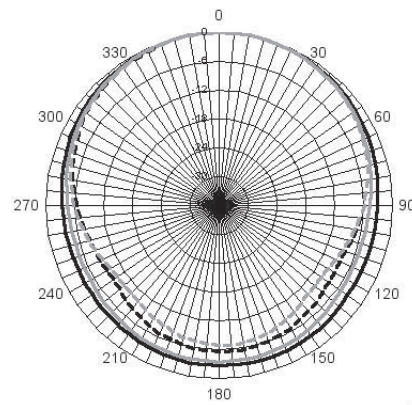


Vertical $\frac{1}{3}$ Octave Polars

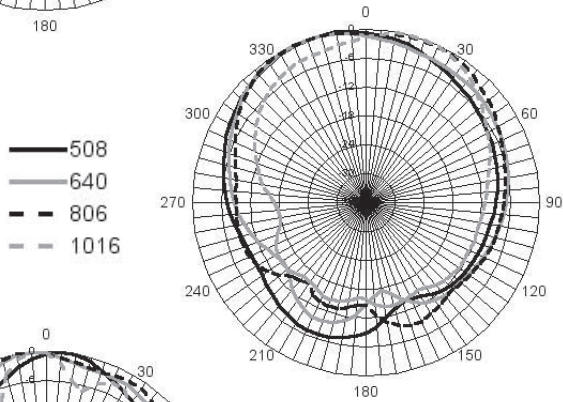
Horizontal $\frac{1}{3}$ Octave Polars



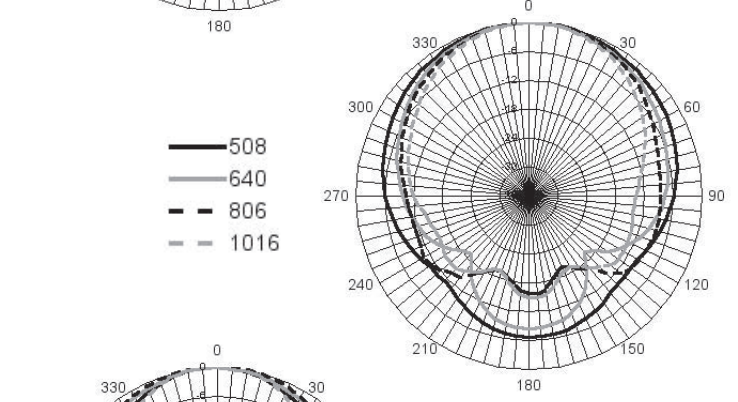
— 202
— 254
- - 320
- - 403



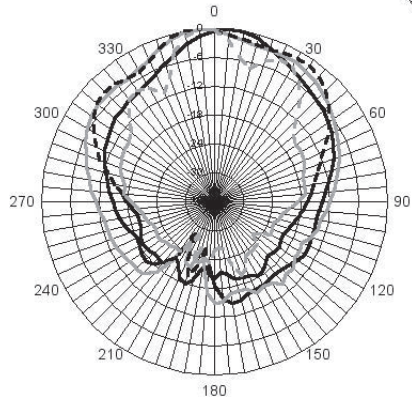
— 202
— 254
- - 320
- - 403



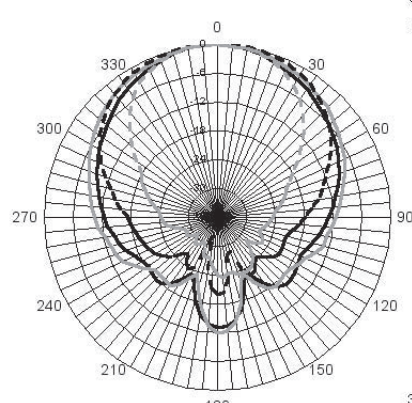
— 508
— 640
- - 806
- - 1016



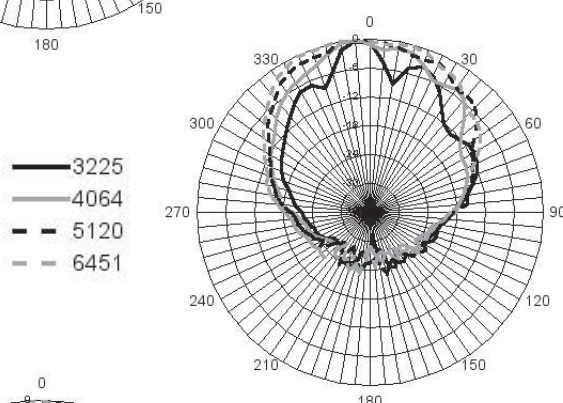
— 508
— 640
- - 806
- - 1016



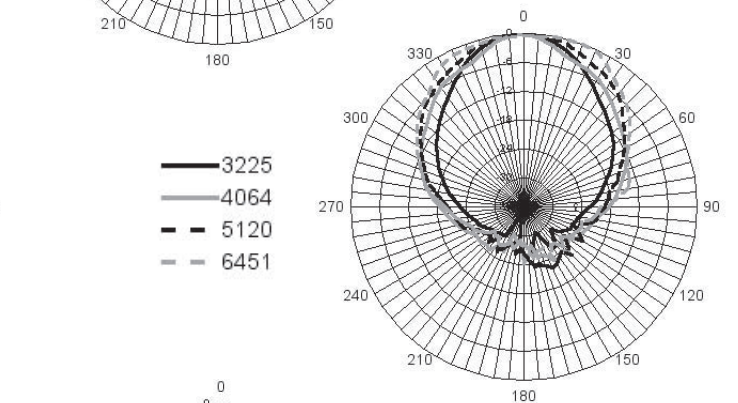
— 1280
— 1613
- - 2032
- - 2560



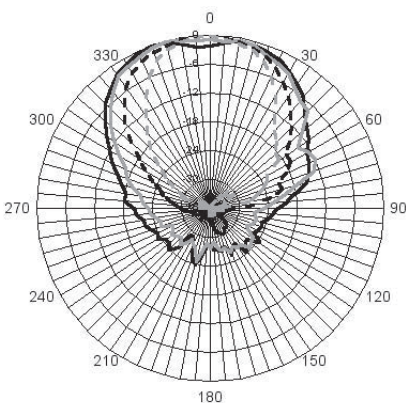
— 1280
— 1613
- - 2032
- - 2560



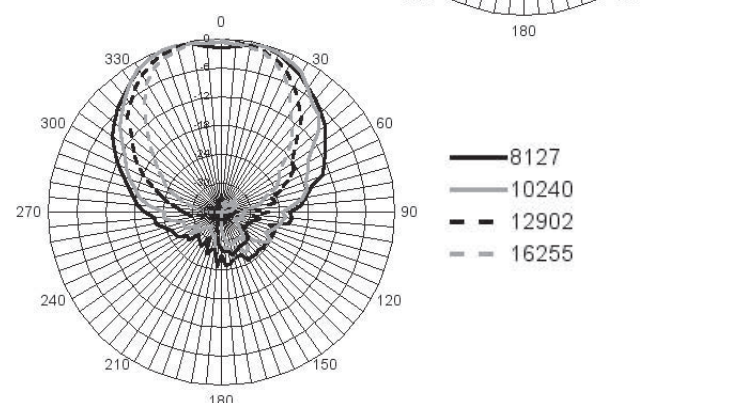
— 3225
— 4064
- - 5120
- - 6451



— 3225
— 4064
- - 5120
- - 6451



— 8127
— 10240
- - 12902
- - 16255



— 8127
— 10240
- - 12902
- - 16255

Architectural Specifications

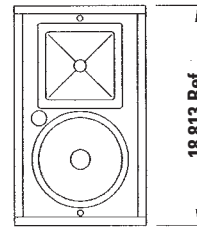
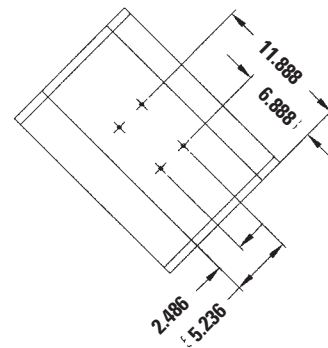
The KI-172 compact high power loudspeaker system shall include an 8" (203.2mm) K-8-E low-frequency transducer utilizing a 1.5" (38.1mm) voice coil and 20-ounce (622g) magnet, and a K-103-TI-KP 1" (25.4mm) titanium diaphragm high-frequency, five-ounce (155.5g) magnet compression driver mounted on a 90° X 90° heavy-duty, injection-molded, modified Tractrix Horn. Signal shall be applied to the transducers via a passive, internal frequency dividing network, incorporating a KLIP-circuit for signal overload protection of the high-frequency transducer. The enclosure tuning shall be of a vented design.

Frequency response shall be 70Hz to 17kHz, ±4dB, with the -10dB point at 59Hz, measured at three meters, half-space anechoic. The dispersion angle shall be 90° X 90° nominal (refer to graph). Directivity shall be 7dB (refer to graph). Sensitivity shall be 96dB SPL, measured at one meter, half-space anechoic, with a 2.83V input. Power handling shall be 100 watts (21.2 volts), to AES standards, continuous pink noise, 50Hz to 10kHz, 6dB peaks. Maximum continuous output at one meter shall be 113dB SPL. Nominal impedance shall be 8 ohms, with 4.5 ohms minimum at 8.5kHz. The internal passive crossover frequency shall be 3kHz, with slopes of 12dB/octave for the low frequency and 18dB/octave for the high frequency. Full-range connections shall be made via standard five-way binding posts, enabling direct stripped wire, lug, pin, single or dual banana plug interface.

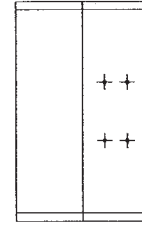
The enclosure panels shall be CNC-fabricated, 3/4" furniture grade plywood, assembled utilizing rabbet and dado joinery. Dimensions for the enclosure shall be 18.813" (47.785cm) high by 11.25" (28.575cm) deep by 11.313" (28.735cm) wide in an asymmetrical trapezoidal shape, with side panels angled at 65° and 45°. Net weight shall be 22 lbs. (9.988kg). The top and bottom panels shall be radiused, with a metal perforated grille for structural integrity and protection of the transducers from impact and tampering.

Enclosure mounting shall be via internal top and bottom T-nuts for the accessory Klipsch SB-102 "U"-shaped bracket. The enclosure shall be coated with lacquer-based primer and lacquer-based texture, with a black or white finish. The enclosure shall also be available unfinished in raw plywood. The enclosure is pre-drilled for Omnimount 100 Series adjustable brackets.

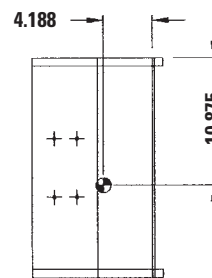
The system shall be a Klipsch KI-172 loudspeaker.



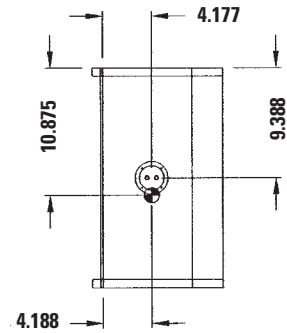
Front View



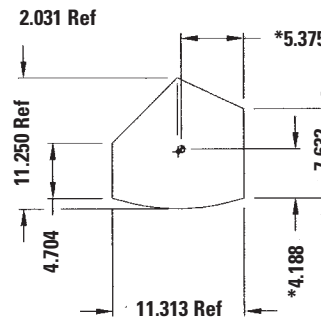
Back View



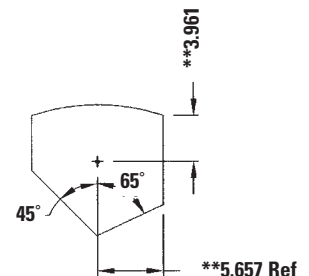
Left Side View



Right Side View



Top View



Bottom View

- * Center of gravity dimensions.
- ** Mounting point dimensions.
- ⊙ This symbol represents center of gravity.
- + This symbol indicates mounting point.

Klipsch®

3502 Woodview Trace
Indianapolis, IN 46268

1-800-KLIPSCH • www.klipsch.com