

# HU85LA

CineBeam Laser 4K UHD Ultra Short Throw

4K UHD (3840x2160)

Up To 2700 Lumen

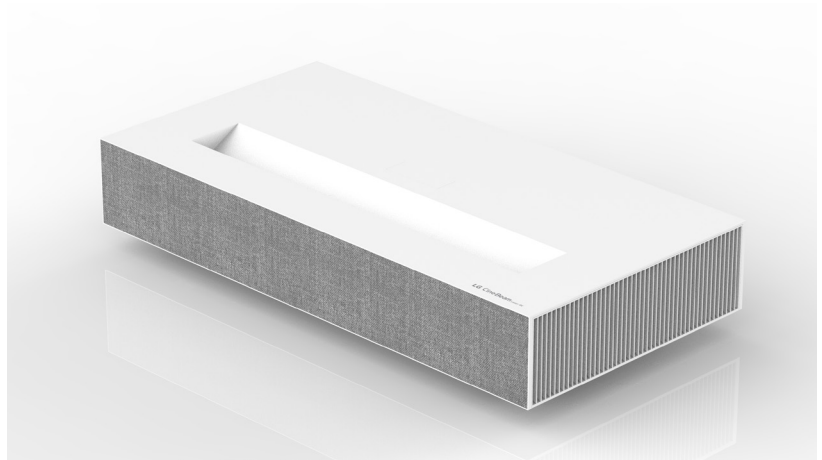
120" screen @ 7.1 inch away

LG ThinkQ - AI

IP Control

HDR10 & TruMotion

**DIGITAL  
CINEMA** AVAILABLE AT  
**DIGITAL CINEMA**



## PROJECTION SYSTEM

Display Type	DLP
Native Resolution	4K UHD (3840 x 2160)*
Screen Size	90" ~ 120"
Projection Image	120"@7.1inch 100"@3.9inch 90"@2.1inch
Aspect Ratio	16:9/Original/4:3/Vertical Zoom/ All-Direction Zoom
Brightness	Up to 2700 lumens**
Contrast Ratio	2,000,000:1
Lamp Type	Laser (B/R LD)
Lamp Life	Up to 20,000 hrs
Noise	26↓ / 28↓ / 30dB(A)↓
HDCP	HDCP2.2
TruMotion	Yes
HDR	HDR10
Digital Keystone Correction	Advanced Edge Adjustment (12 Point Warping)

## LG SMART TV

Premium content providers	Netflix, Youtube, Amazon, Channel Plus, Accuweather, Hulu, VUDU (TBD)***
Magic Remote	Yes
App Store	Yes
Web Browser	Yes (LG ThinQ + Google Assistance)

## CONNECTIVITY / WIRELESS

DTV Tuner	Yes
DLNA	Yes
USB	Yes
Bluetooth (with Speaker)	Yes
Screen Share (with Miracast, WiDi supporting device)	Yes
Wireless Contents Share (with iOS, Android devices)	Yes

## AUDIO

Bluetooth sound out	Yes
Built-in Speakers	5W + 5W Stereo
Bluetooth AV Sync Adjustment	Yes

## INPUTS/OUTPUTS

Digital TV Tuner	Yes
Audio out	1 (3.5mm), S/PDIF 1(Optical)
HDMI™	2
USB (DivX®, MP3, Photo)	2 (USB 2.0)
USB Type C	1 (Display, Data, Power Delivery to connected device)
RJ45	1
HID (Keyboard/Mouse/ GamePad Connection Thru USB)	Yes
IP Control	Yes
<b>POWER</b>	
Power Supply (Voltage/Hz)	100V – 240V @ 50-60 Hz (PSU Built-in)
Power Consumption	330W (Max)
Standby Mode	<0.5W
Quick On/Off	Yes (On in 10 seconds – Off in 2 seconds )

## ACCESSORIES / MANUAL

Remote Control	1 Magic Remote (Battery included)
Manual	Simple Book
Adaptor	PSU built-in

## DIMENSIONS/WEIGHT

Product (WxHxD)	26.8" x 5.0" x 13.7"
Shipping Dimensions (WxHxD)	33.7" x 10" x 18.1"
Weight	26.9 lbs
Shipping Weight	33.1 lbs

## WARRANTY / UPC

Limited Warranty	1 Year Parts & Labor
UPC	719192632066

\*4K UHD resolution with 8.3 million discrete pixels projected by XPR (Expanded Pixel Resolution) video processing  
 \*\*The brightness is based on the perceived brightness equivalent to the brightness of lamp projector  
 \*\*\*Some apps may be available via software update, which requires internet connection