

<b>Model</b>	<b>AW151</b>
<b>Frequency response</b>	50-22kHz
<b>Sensitivity</b>	90dB
<b>Impedance (nominal)</b>	4-8 Ohms
<b>Recommended amplifier power</b>	15-100 watts RMS
<b>Drivers</b>	(1) 130mm/5.25" aluminium CPC mid/bass (1) 25mm/1" aluminium dome tweeter
<b>X-Over type</b>	Dual value parallel
<b>Dimensions (hxwx d)</b>	335 x 210 x 101mm 13.2 x 8.5 x 4.0"
<b>Cut-out size (wxhxd*)</b>	178 x 304 x 93mm 6.9 x 11.9 x 3.7"
<b>Weight</b>	2kg 4.4lbs
<b>Magnetic shielding</b>	Yes
<b>Finish</b>	White / paintable
<b>Partition thickness range</b>	12mm - 35mm 0.5 - 1.4"
<b>Back box</b>	Available



<b>Model</b>	<b>AW161</b>
<b>Frequency response</b>	40-22kHz
<b>Sensitivity</b>	91dB
<b>Impedance (nominal)</b>	4-8 Ohms
<b>Recommended amplifier power</b>	15-150 watts RMS
<b>Drivers</b>	(1) 165mm/6.5" aluminium CPC mid/bass (1) 25mm/1" aluminium dome tweeter
<b>X-Over type</b>	Dual value parallel
<b>Dimensions (hxwx d)</b>	385 x 235 x 112mm 15.0 x 9.0 x 4.5"
<b>Cut-out size (wxhxd*)</b>	204 x 354 x 102mm 8.0 x 13.9 x 4.0"
<b>Weight</b>	2.5kg 5.5lbs
<b>Magnetic shielding</b>	Yes
<b>Finish</b>	White / paintable
<b>Partition thickness range</b>	12mm - 35mm 0.5 - 1.4"
<b>Back box</b>	Available



<b>Model</b>	<b>AW152</b>
<b>Frequency response</b>	45-22kHz
<b>Sensitivity</b>	92dB
<b>Impedance (nominal)</b>	4-8 Ohms
<b>Recommended amplifier power</b>	15-120 watts RMS
<b>Drivers</b>	(2) 130mm/5.25" aluminium CPC mid/bass (1) 25mm/1" aluminium dome tweeter
<b>X-Over type</b>	Switchable AVH™ (Adjustable Vertical Horizontal) dual value parallel
<b>Dimensions (hxwx d)</b>	530 x 210 x 101mm 21.0 x 8.5 x 4.0"
<b>Cut-out size (wxhxd*)</b>	178 x 500 x 93mm 6.9 x 19.6 x 3.7"
<b>Weight</b>	4kg 8.8lbs
<b>Magnetic shielding</b>	Yes
<b>Finish</b>	White / paintable
<b>Partition thickness range</b>	12mm - 35mm 0.5 - 1.4"
<b>Back box</b>	Available



<b>Model</b>	<b>AW162</b>
<b>Frequency response</b>	38-22kHz
<b>Sensitivity</b>	93dB
<b>Impedance (nominal)</b>	4-8 Ohms
<b>Recommended amplifier power</b>	15-180 watts RMS
<b>Drivers</b>	(2) 165mm/6.5" aluminium CPC mid/bass (1) 25mm/1" aluminium dome tweeter
<b>X-Over type</b>	Switchable AVH™ (Adjustable Vertical Horizontal) dual value parallel
<b>Dimensions (hxwx d)</b>	555 x 235 x 112mm 22.0 x 9.0 x 4.5"
<b>Cut-out size (wxhxd*)</b>	204 x 524 x 102mm 8.0 x 20.5 x 4.0"
<b>Weight</b>	5kg 11lbs
<b>Magnetic shielding</b>	Yes
<b>Finish</b>	White / paintable
<b>Partition thickness range</b>	12mm - 35mm 0.5 - 1.4"
<b>Back box</b>	Available



<b>Model</b>	<b>AW153</b>
<b>Frequency response</b>	45-22kHz
<b>Sensitivity</b>	92dB
<b>Impedance (nominal)</b>	4-8 Ohms
<b>Recommended amplifier power</b>	15-120 watts RMS
<b>Drivers</b>	(2) 130mm/5.25" aluminium CPC mid/bass (1) 25mm/1.0" aluminium dome tweeter
<b>X-Over type</b>	Dual value parallel
<b>Dimensions (hxwx d)</b>	284 x 349 x 101mm 11 x 14 x 4"
<b>Cut-out size (wxhxd*)</b>	317 x 252 x 93mm 12.4 x 9.9 x 3.7"
<b>Weight</b>	4kg 8.8lbs
<b>Magnetic shielding</b>	Yes
<b>Finish</b>	White / paintable
<b>Partition thickness range</b>	12mm - 35mm 0.5 - 1.4"
<b>Back box</b>	Available



<b>Model</b>	<b>AC161</b>
<b>Frequency response</b>	65-22kHz
<b>Sensitivity</b>	89dB @ 2.83V
<b>Impedance (nominal)</b>	4-8 Ohms
<b>Recommended amplifier power</b>	15-100 watts
<b>Drivers</b>	(1) 165mm/6.5" aluminium CPC mid/bass (1) 25mm/1.0" pivoting aluminium dome tweeter
<b>X-Over type</b>	Damped 2nd Order/DVP
<b>Dimensions (diameter x depth)</b>	280 x 175mm 11.0 x 6.9"
<b>Cut-out size (diameter)</b>	250mm 9.9"
<b>Weight</b>	3.2kg 5.5lbs
<b>Magnetic shielding</b>	No
<b>Finish</b>	White / paintable
<b>Partition thickness range</b>	7 - 30mm 0.8" - 1.2"
<b>RIK (Roughing-in-kit) available</b>	Yes



<b>Model</b>	<b>AC261</b>
<b>Frequency response</b>	65-22kHz
<b>Sensitivity</b>	89dB @ 2.83V
<b>Impedance (nominal)</b>	4-8 Ohms
<b>Recommended amplifier power</b>	15-150 watts
<b>Drivers</b>	(1) 165mm/6.5" aluminium CPC mid/bass (1) 25mm/1.0" pivoting aluminium dome tweeter
<b>X-Over type</b>	Damped 2nd Order with switchable Mid/HF level/DVP
<b>Dimensions (diameter x depth)</b>	280 x 175mm 11 x 6.9"
<b>Cut-out size (diameter)</b>	250mm 9.9"
<b>Weight</b>	3.2kg 6.6lbs
<b>Magnetic shielding</b>	No
<b>Finish</b>	White / paintable
<b>Partition thickness range</b>	7 - 30mm 0.8" - 1.2"
<b>RIK (Roughing-in-kit) available</b>	Yes



<b>Model</b>	<b>AC361</b>
<b>Frequency response</b>	65-22kHz
<b>Sensitivity</b>	89dB @ 2.83V
<b>Impedance (nominal)</b>	4-8 Ohms
<b>Recommended amplifier power</b>	15-100 watts
<b>Drivers</b>	(1) 165mm/6.5" Performance technologies CPC mid/bass (1) 25mm/1" pivoting aluminium dome tweeter
<b>X-Over type</b>	Damped 2nd Order with switchable Mid/HF level/DVP
<b>Dimensions (diameter x depth)</b>	280 x 175mm 11.0 x 6.9"
<b>Cut-out size (diameter)</b>	250mm 9.9"
<b>Weight</b>	3.8kg 6.6lbs
<b>Magnetic shielding</b>	No
<b>Finish</b>	White / paintable
<b>Partition thickness range</b>	7 - 30mm 0.8" - 1.2"
<b>RIK (Roughing-in-kit) available</b>	Yes



**DIGITAL  
CINEMA**

**AVAILABLE AT  
DIGITAL CINEMA**

**MORDAUNT-SHORT**

Mordaunt-Short's policy is one of continuous improvement. Design and specifications are therefore subject to change without prior notice. In addition, some models are specific to certain countries - please check with your dealer for details.

Mordaunt-Short, Gallery Court, Pilgrimage Street, London SE1 4LL, England

www.mordaunt-short.com

## SmartLoc™

SmartLoc is unique to Avant architect™. This patent-pending clamping system enables quick and easy mounting with minimal disruption to existing décor. The entire range can be accommodated in virtually all partition walls without the need for fitting



Avant architect in-wall SmartLoc™

accessories or a separate mounting kit. A mechanical isolation system prevents re-radiation from the mounting wall – so often a problem with custom install designs – allowing the drivers to operate to their full potential whatever their situation.



Our in-ceiling SmartLoc™ system offers quick and easy installation

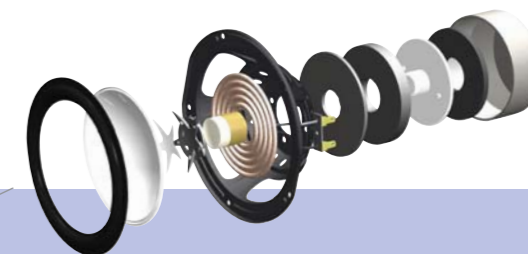
## Décormatch™


To ensure Avant architect is equally at home in any setting, the mounting bezel and grille can be spray painted to match any décor. Protective templates are supplied to prevent overspray and step-by-step instructions mean customisation is extremely straight-forward.



## Avant architect technologies

Like all Mordaunt-Short designs, Avant architect features a host of groundbreaking technologies to ensure they sound every bit as good as they look.



-  **CPC (Continuous Profile Cone)**  
New 6.5" (130mm) CPC™ drivers featuring Mordaunt-Short's Variable V-Form™ technology offer truly predictable driver performance by ensuring controlled pistonic movement at low frequencies and minimal break-up at higher frequencies. Lightweight, rigid anodised aluminium cones are used for faithful dynamics.
  -  **The AC361** also uses drive units derived directly from the award-winning Performance range for improved sound.
  -  **Aluminium dome tweeters**  
Give excellent dynamics and astonishing detail over a wide frequency range. A high temperature voice coil with liquid cooling and damping guarantees the perfect performance.
  -  **Infinitely adjustable tweeter**  
All in-ceiling models incorporate an infinitely adjustable tweeter to meet demanding dispersion requirements created by the disparity in ceiling height/floor ratios
  -  **Optimised tweeter flare**  
Smooth and wide dispersion characteristics are essential in permanently installed speakers. Avant architect's tweeter flare is designed to give an even response across all frequencies.
  -  **Neodymium and premium Y30 magnets**  
High flux density, self shielding neodymium magnet assemblies offer improved sensitivity and better dynamics than conventional tweeter magnets. Powerful Y30 magnets further enhance the Avant architect's woofer.
  -  **24k gold plated hi-fi specification quick-release binding posts**  
A quick-release terminal design facilitates swift installation and enables single action release whilst allowing maximum wiring permutations.
  -  **Audiophile grade crossover featuring AVH**  
The AVH™ (Adjustable Vertical Horizontal) switching system enables vertical or horizontal mounting (selected models) for greater flexibility and optimal system dispersion.
- These and many other critically-acclaimed Mordaunt-Short technologies come together to form Avant architect, a revolutionary custom install loudspeaker.**

Since 1967 Mordaunt-Short has consistently produced ground-breaking loudspeaker designs and this spirit of innovation continues with the introduction of Avant architect™ – a stunning stereo and multi-channel in-ceiling and in-wall speaker range.

Developed from the ground-up, Avant architect utilises SmartLoc™ a patent pending state-of-the-art mounting system for hassle-free installation and consistently excellent performance wherever it's installed. To bring you as close as possible to the original performance, Avant architect plays host to all the latest generation Mordaunt-Short driver technologies.

Designed to ensure minimal disruption to existing décor, Avant architect is supplied in white and Mordaunt-Short's Décormatch™ system means the mounting bezel and grille can be over-painted to seamlessly blend into any environment. Now you can appreciate true hi-fi around the home without the need for intrusive speaker cabinets.

# Avant architect™

# MORDAUNT-SHORT