

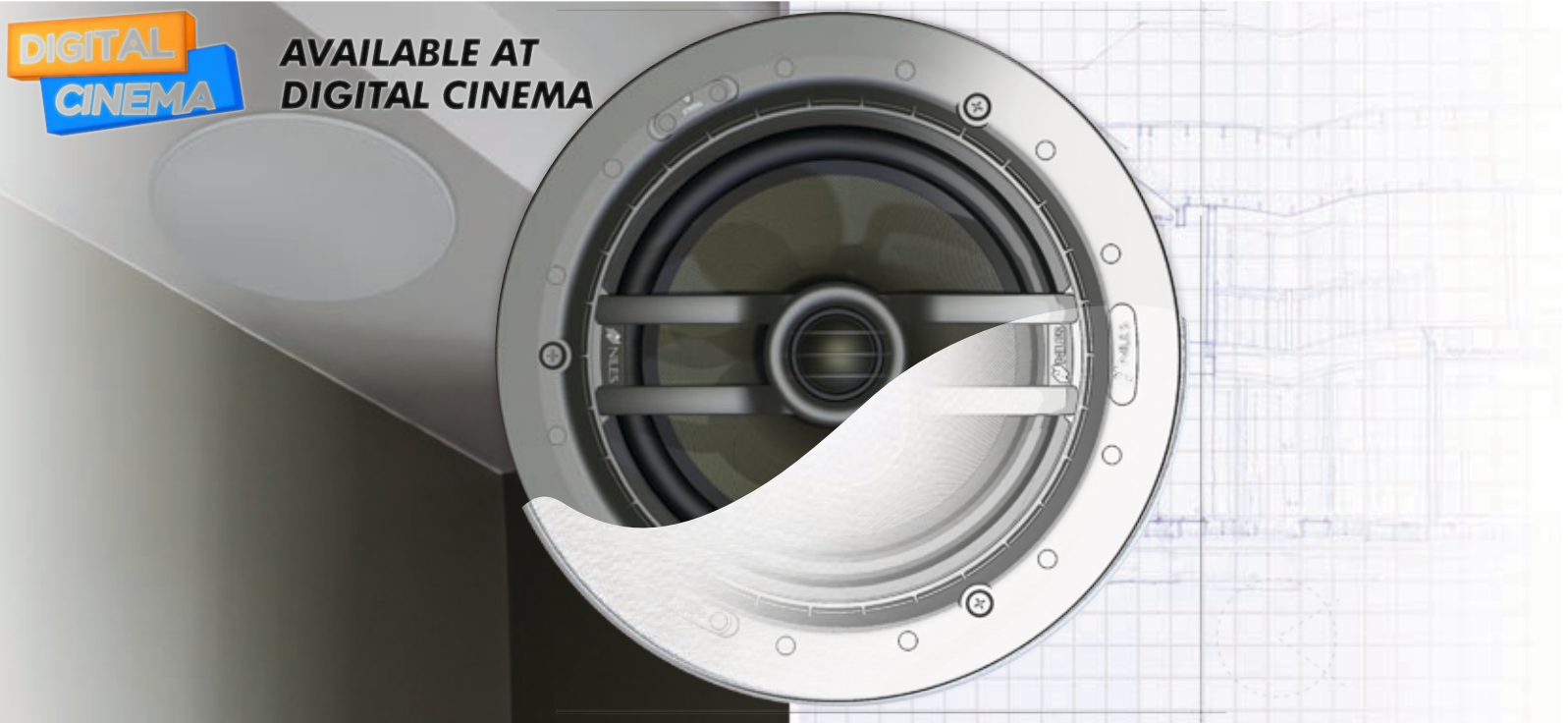


Designer Aesthetics
Audiophile Performance
Installation Ease

PERFORMANCE LOUDSPEAKER SPECIFICATIONS SHEET



AVAILABLE AT
DIGITAL CINEMA



DS7PR

7" LEFT/CENTER/RIGHT
DIRECTED SOUNDFIELD LOUDSPEAKER



Performance loudspeakers are optimal for primary and secondary listening rooms and home theater applications. Glass fiber woofer cones and proprietary Teteron[®] tweeters extend the frequency response for a superior listening experience.

FEATURES AND BENEFITS

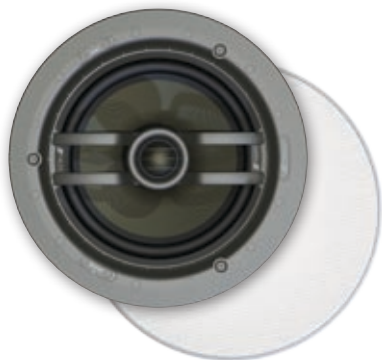
- **Designer Aesthetics** Magnetically attached MicroThin™ speaker grilles ensure a clean, virtually invisible appearance that blends with the room's aesthetics. Optional square grilles provide added design flexibility.
- **Superior Sound Quality** Patented Directed Soundfield™ technology directs the sound to the listening area for optimum sound quality. New patent-pending pivot mechanism adjusts smoothly and holds the loudspeaker woofer securely in position.
- **Installation Ease** Three patent-pending spring-tensioned mounting clamps permit quick installation and compensate for uneven mounting surfaces and varied environmental conditions. Weather-resistant construction enables installation in moist areas, such as bathrooms or outdoors under eaves.
- **Install With Confidence** The best-built loudspeakers deserve the best protection—the Niles Lifetime Limited Warranty.



DS7PR

7" Left/Center/Right Directed Soundfield™ Loudspeaker

For primary and secondary listening rooms and home theater applications



Packaged Individually with Round MicroThin™ Grille

Stock Number
FG01617

RELATED PRODUCTS	
	RWE7C Rear Wave Enclosure Stock Number: FG01643
	SG7C Square Loudspeaker Grille Stock Number: FG01645
	NCB7C New Construction Bracket Stock Number: FG01647

FEATURES

- Patented Directed Soundfield technology* with new patent-pending pivot mechanism directs the sound to the optimum listening area
- 7" glass fiber woofer cone with curvilinear profile and extended pole for improved dynamics, smoother sound and less peaking at high frequencies
- 1" fluid-cooled Teteron® dome tweeter provides ultra-wide dispersion and smooth high frequency response
- Zero-diffraction tweeter assembly pivots up to 15° (30° when the woofer is in its maximum position) for precise aiming of high frequencies to the listening area
- Magnetically attached, rust-resistant grille covers install quickly and provide a low profile look
- Integrated baffle/frame assembly increases the cone area for deeper bass than competitive speakers of the same diameter
- Dialog switch enhances vocal presence when used as the center channel in a home theater
- Tweeter level switch enables precise adjustments to match room acoustics
- Patent-pending spring tensioned mounting clamps permit quick installation and compensate for uneven mounting surfaces and varied environmental conditions
- Weather-resistant construction enables installation in wet environments and outdoors under eaves
- Optional rear wave enclosure provides predictable sound performance and eliminates unwanted sound from bleeding into adjacent rooms or spaces

SPECIFICATIONS

- Recommended amplifier power: 10 - 130 watts
- Impedance: 8 ohm nominal; 6 ohm minimum
- Frequency response: 52 Hz to 21 kHz +/- -3 dB
- Voice coil size: 1"

DIMENSIONS

- Frame dimensions (with grille): 9-7/8" (25.15 cm) diameter
- Hole cutout dimensions: 8-1/2" (21.60 cm) diameter
- Depth behind ceiling (5/8" drywall): 5-5/16" (13.6 cm)

WARRANTY: Lifetime Limited



*US Patent 6,070,694

Directed Soundfield™ technology with a new patent-pending pivot mechanism directs the sound to ensure the best possible listening experience.



BLENDING HIGH FIDELITY AND ARCHITECTURE®

