

PROFICIENT

# Protege™



**AVAILABLE AT  
DIGITAL CINEMA**

# New Subs, Stealthy Speakers & Flexible IR Kits.

*This year Proficient steps up in sound & style. And in convenience too.*

Our new Proficient Protege subwoofers is, without a doubt, the best floor-standing sub line we've ever made. All of them have powerful Class D amps, front-firing composite cone woofers and down-firing passive radiators for added deep bass impact. The Proficient Protege subs combine precise pitch definition and low distortion for true music lovers, with the bottom-end power that movie enthusiasts demand. We built the Proficient Protege subs for one reason: to take your finished installs from great to incredible!



Dealers really love our new Proficient Protege architectural speakers. They combine the clean thin-bezel look your clients prefer with the exact same Proficient sound. That's because all of our Protege speakers were adapted from the legacy line. The difference is in the look, and they're easier to install, too. The new Protege line includes 31 models: from our home theater line of 10 architectural speakers, showcased by our industry-leading 10" 3-way in-ceiling LCR speaker; to our selection of 18 whole-house loudspeakers; to our three in-wall and in-ceiling subs.

We've also made installing IR control systems way easier than ever before. The new Proficient One IR Kit combines a dime-sized sensor with a unique mounting system that works for any installation. Each kit includes three snap-in mounts — tabletop, TV mount and flush mount — so now you can stock just one IR kit instead of three. And you never have to worry about bringing the wrong one to the jobsite!



With our new subs, speakers and IR kit, it's going to be easier than ever before to create great-sounding and some really good looking installations. We think you — and your clients — will absolutely love them!



*Keith*

Keith Marshall  
Cell: 951.288.0945  
keith.marshall@corebrands.com

# Table of Contents

<b>Category</b>	<b>Page</b>
Proficient Protege Powered Subwoofers.....	6
Proficient Protege Passive Architectural Subwoofers.....	7
180 Watt Mono Sub Amp with Built-In Crossover.....	7
Proficient Protege Whole-House Ceiling Speakers.....	10
Proficient Protege Ceiling LCR Speakers .....	12
Proficient Protege Inwall LCR Speakers .....	13
Proficient Protege Inwall Speakers.....	14
Proficient Protege Twin-Tweeter Ceiling Speakers .....	15
Proficient Signature Series.....	16
Legacy PS Series Powered Subwoofers .....	17
Outdoor/Indoor Speakers.....	18
Outdoor/Indoor Twin-Tweeter Speakers.....	19
Rocks.....	19
Cabinet Loudspeakers.....	20
Speaker Selectors.....	21
Infrared Kits.....	22
Infrared Components .....	23
MultiRoom Controllers.....	24
Color Source Keypad & Dock.....	24
Controller Keypads & Accessories.....	25
Volume Controls .....	26
Pre-Construction Brackets .....	27
Ceiling Tile Brackets.....	28
Back Boxes .....	28
Speaker Cover Plates.....	29
Replacement Speaker Grilles .....	29



*New High Output Digital Subs*

# More Bass. Less Space.

The all new Proficient Protege subwoofers deliver as much as +10dB more deep bass output than typical subs of their size. That means a bigger boost than you'd get by adding a second sub.

All of the new floor-standing subwoofers feature powerful Class D amps and tough composite-cone woofers. Plus, a down-firing passive radiator that really brings out the ultra-deep bass notes.

Thanks to the passive radiator, you get extra bass without taking up more space. With line and LFE in, high-pass line out, and volume, crossover and phase controls, these subs interface with almost any kind of system.

Our new Proficient Protege line includes 8-inch, 10-inch and 12-inch models. All have the power to make your next home theater job sound really great. Quality built, of course. Just what you'd expect from Proficient.

PROFICIENT  
**Protege**<sup>™</sup>

PROFICIENT  
**Protege**  
Powered Subwoofers

## FS12 12" Floor Standing Sub

U/M  
Each

One subwoofer with 12" front-firing polypropylene-coated fiber composite woofer, 12" down-firing passive radiator and 300 watt Class D Amp. Anti-clipping circuitry assures high output with low distortion. Black wood grain finish and damped rubber feet.

- Power: 300 Watt RMS Class D Amp
- Frequency Response: 28Hz - 150Hz
- Input: Left & Right Line Level, LFE
- Output: Line Level High-Pass
- Phase Switch: 0 - 180°
- Crossover: 50Hz - 150Hz; Bypass
- Protection: Anti-Clipping Circuitry
- Power On/Off: Auto Sensing
- Finish: Wood Grain w/Dampened Rubber Feet
- Dimensions (H x W x D): 16 $\frac{5}{8}$ " x 14 $\frac{1}{2}$ " x 15 $\frac{1}{2}$ "



Shipping  
Q1 2015



Shipping  
Q1 2015

## FS10 10" Floor Standing Sub

U/M  
Each

One subwoofer with 10" front-firing polypropylene-coated fiber composite woofer, 10" down-firing passive radiator and 250 watt Class D Amp. Anti-clipping circuitry assures high output with low distortion. Black wood grain finish and damped rubber feet.

- Power: 250 Watt RMS Class D Amp
- Frequency Response: 30Hz - 150Hz
- Input: Left & Right Line Level, LFE
- Output: Line Level High-Pass
- Phase Switch: 0 - 180°
- Crossover: 50Hz - 150Hz; Bypass
- Protection: Anti-Clipping Circuitry
- Power On/Off: Auto Sensing
- Finish: Wood Grain w/Dampened Rubber Feet
- Dimensions (H x W x D): 15 $\frac{1}{8}$ " x 13 $\frac{1}{4}$ " x 14"

## FS8 8" Floor Standing Sub

U/M  
Each

One subwoofer with 8" front-firing polypropylene-coated fiber composite woofer, 8" down-firing passive radiator and 200 watt Class D Amp. Anti-clipping circuitry assures high output with low distortion. Black wood grain finish and damped rubber feet.

- Power: 200 Watt RMS Class D Amp
- Frequency Response: 32Hz - 150Hz
- Input: Left & Right Line Level, LFE
- Output: Line Level High-Pass
- Phase: 0 - 180°
- Crossover: 50Hz - 150Hz; Bypass
- Protection: Anti-Clipping Circuitry
- Power On/Off: Auto Sensing
- Finish: Wood Grain w/Dampened Rubber Feet
- Dimensions (H x W x D): 13 $\frac{3}{8}$ " x 11 $\frac{3}{4}$ " x 12 $\frac{1}{2}$ "



Shipping  
Q1 2015

PROFICIENT

# Protege™

## Passive Architectural Subwoofers



### IWS85 Inwall Sub

U/M  
Each

Dual 8" inwall passive subwoofer with long excursion graphite woofers and a power handling capacity of 200 watts. Fits vertically in a standard 2x4 stud bay. Designed to be used with the Proficient M3 Amp/Crossover.

- Replaces IWS82 Inwall Sub
- Power Handling: 200 Watts
- Frequency Response: 30Hz - 120Hz
- Includes Thin-Bezel Grille held by Neo Magnets
- Dimensions (H x W x D): 20" x 11½" x 3½"
- Wall Cut Out (H x W): 18½" x 9¾"

### IWS105 Inwall Sub

U/M  
Each

Inwall passive subwoofer with a 10" long excursion treated paper cone woofer and inverted ferrite magnet structure with a power handling capacity of 250 watts. Designed to be used with the Proficient M3 Amp/Crossover. For new construction, use the BB-IWS10 MDF back box.

- Replaces IWS100 Inwall Sub
- Power Handling: 250 Watts
- Frequency Response: 36Hz - 150Hz
- Includes Thin-Bezel Grille held by Neo Magnets
- Dimensions (H x W x D): 13⅝" x 13⅝" x 3¾"
- Wall Cut Out (H x W): 12¼" x 12¼"



### ICS11 Ceiling Sub

U/M  
Each

Ceiling passive subwoofer with a 10" long excursion graphite woofer and a power handling capacity of 175 watts. Designed to be used with the Proficient M3 Amp/Crossover.

- Replaces ICS10 Ceiling Sub
- Power Handling: 175 Watts
- Frequency Response: 30Hz - 120Hz
- Includes Thin-Bezel Grille held by Neo Magnets
- Diameter x Depth: 13⅝" x 6½"
- Ceiling Cut Out: 11⅞"

### M3 Amp/Crossover

U/M  
Each

180 watt high-current mono amp with built-in crossover network. Crossover features adjustments for subwoofer fine-tuning to individual room acoustics. Includes bolt-on rack ears.

- Use with Proficient Inwall & Ceiling Architectural Subs
- Premium Cast Aluminum Faceplate
- Power: 180 Watts Single Channel
- Variable Low Pass Crossover: 35Hz - 150Hz
- LFE Input & Pass Through Output
- Phase Switch
- Remote Power-On Switching via Signal Sensing
- Includes Bolt-On Rack Ears
- Dimensions (H x W x D): 4" x 17⅞" x 12⅝"
- Weight: 18 lbs



### BB-IWS10 Back Box

U/M  
Each

Medium Density Fiberboard (MDF) back box for the IWS105 inwall sub, designed to fit any standard 16" stud bay. Cuts down on translational energy vibration between adjacent walls. The IWS105 sub is tuned to the BB-IWS10 back box. *Not for use with ICS11 or IWS85.*

- Dimensions (H x W x D): 42¾" x 14⅜" x 3¼"



*New Thin-Bezel Architectural Speakers*



# Awesome Sound. Great New Look.

Our new Proficient Protege ceiling and inwall speakers have a thin-bezel design that really enhances the look of your installations without making you change the way you spec and install speakers.

Every Proficient Protege speaker is built on our existing Proficient speaker platform. So, the acoustical performance is the same. The features & specs are the same, as well as the cut-out templates.

The new magnetic grilles are easier to install. From a safety standpoint, our neo magnets are mounted behind the baffle so the grille won't detach, unlike other ceiling speaker designs that use front-mounted magnets.

The Proficient Protege line includes 18 ceiling speakers, 10 inwall speakers, two inwall subs and a ceiling subwoofer. Quality built, of course. Exactly what you'd expect from Proficient.

PROFICIENT  
**Protege**<sup>™</sup>

PROFICIENT

# Protege

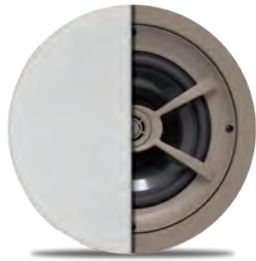
## Whole-House Ceiling Speakers

### C851

U/M  
Pair

One pair of ceiling speakers with 8" Kevlar® woofers, cast magnesium woofer baskets, 1" pivoting aluminum dome tweeters, ±3dB bass & treble contour switches and 175 watt power handling.

- Replaces C850 Ceiling Speakers
- Power Handling: 175 Watts
- Frequency Response: 28Hz - 22kHz
- Impedance: 8Ω
- Sensitivity: 92dB 1W/1m
- Includes Thin-Bezel Grilles held by Neo Magnets
- Diameter x Depth: 11½" x 4¼"
- Ceiling Cut Out: 9¾"



### C801

U/M  
Pair

One pair of ceiling speakers with 8" graphite woofers, 1" pivoting aluminum dome tweeters, +3dB bass & treble contour switches and 150 watt power handling.

- Replaces C800 Ceiling Speakers
- Power Handling: 150 Watts
- Frequency Response: 28Hz - 22kHz
- Impedance: 8Ω
- Sensitivity: 92dB 1W/1m
- Includes Thin-Bezel Grilles held by Neo Magnets
- Diameter x Depth: 11½" x 4¼"
- Ceiling Cut Out: 9¾"



### C791

U/M  
Pair

One pair of ceiling speakers with 8" polypropylene woofers, 1" pivoting soft dome tweeters and 125 watt power handling.

- Replaces C790 Ceiling Speakers
- Power Handling: 125 Watts
- Frequency Response: 36Hz - 20kHz
- Impedance: 8Ω
- Sensitivity: 92dB 1W/1m
- Includes Thin-Bezel Grilles held by Neo Magnets
- Diameter x Depth: 11½" x 4¼"
- Ceiling Cut Out: 9¾"



### C646

U/M  
Pair

One pair of ceiling speakers with 6½" Kevlar® woofers, cast magnesium woofer baskets, 1" pivoting aluminum dome tweeters, +3dB bass & treble contour switches and 150 watt power handling.

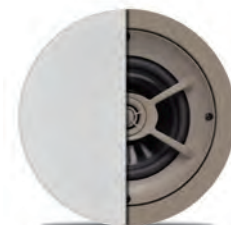
- Replaces C645 Ceiling Speakers
- Power Handling: 150 Watts
- Frequency Response: 32Hz - 22kHz
- Impedance: 8Ω
- Sensitivity: 92dB 1W/1m
- Includes Thin-Bezel Grilles held by Neo Magnets
- Diameter x Depth: 9¼" x 3⅝"
- Ceiling Cut Out: 8¼"

### C641

U/M  
Pair

One pair of ceiling speakers with 6½" graphite woofers, 1" pivoting aluminum dome tweeters, +3dB bass & treble contour switches and 125 watt power handling.

- Replaces C640 Ceiling Speakers
- Power Handling: 125 Watts
- Frequency Response: 32Hz - 22kHz
- Impedance: 8Ω
- Sensitivity: 92dB 1W/1m
- Includes Thin-Bezel Grilles held by Neo Magnets
- Diameter x Depth: 9¼" x 3⅝"
- Ceiling Cut Out: 8¼"



PROFICIENT

# Protege™

## Whole-House Ceiling Speakers



### C626

U/M  
Pair

One pair of ceiling speakers with 6½" graphite woofers, 1" pivoting silk dome tweeters and 100 watt power handling.

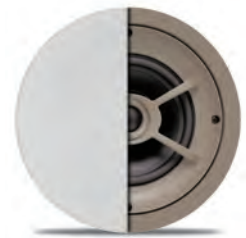
- Replaces C625 Ceiling Speakers
- Power Handling: 100 Watts
- Frequency Response: 45Hz - 20kHz
- Impedance: 8Ω
- Sensitivity: 91dB 1W/1m
- Includes Thin-Bezel Grilles held by Neo Magnets
- Diameter x Depth: 9¼" x 4"
- Ceiling Cut Out: 8¼"

### C621

U/M  
Pair

One pair of ceiling speakers with 6½" polypropylene woofers, 1" pivoting silk dome tweeters and 100 watt power handling.

- Replaces C620 Ceiling Speakers
- Power Handling: 100 Watts
- Frequency Response: 45Hz - 20kHz
- Impedance: 8Ω
- Sensitivity: 91dB 1W/1m
- Includes Thin-Bezel Grilles held by Neo Magnets
- Diameter x Depth: 9¼" x 3⅝"
- Ceiling Cut Out: 8¼"



### C612

U/M  
Pair

One pair of ceiling speakers with 6½" polypropylene woofers, 1" pivoting soft dome tweeters and 85 watt power handling.

- Replaces C610 Ceiling Speakers
- Power Handling: 85 Watts
- Frequency Response: 45Hz - 20kHz
- Impedance: 8Ω
- Sensitivity: 91dB 1W/1m
- Includes Thin-Bezel Grilles held by Neo Magnets
- Diameter x Depth: 9¼" x 3⅝"
- Ceiling Cut Out: 8¼"

### C606

U/M  
Pair

One pair of ceiling speakers with 6½" polypropylene woofers, ¾" soft dome tweeters and 75 watt power handling.

- Replaces C605 Ceiling Speakers
- Power Handling: 75 Watts
- Frequency Response: 45Hz - 20kHz
- Impedance: 8Ω
- Sensitivity: 90dB 1W/1m
- Includes Thin-Bezel Grilles held by Neo Magnets
- Diameter x Depth: 9¼" x 3⅝"
- Ceiling Cut Out: 8¼"



### C501

U/M  
Pair

One pair of ceiling speakers with 5¼" polypropylene woofers, ½" pivoting polyamide hard dome tweeters and 75 watt power handling.

- Replaces C500 Ceiling Speakers
- Power Handling: 75 Watts
- Frequency Response: 40Hz - 20kHz
- Impedance: 8Ω
- Sensitivity: 90dB 1W/1m
- Includes Thin-Bezel Grilles held by Neo Magnets
- Diameter x Depth: 7¾" x 3¼"
- Ceiling Cut Out: 6⅞"

# Protege

## Ceiling LCR Speakers

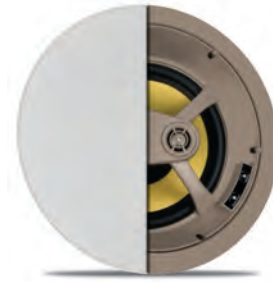
### C1031

U/M  
Each

One LCR ceiling speaker with woofer and midrange/tweeter bridge fixed at a 15° angle. 10" Kevlar® woofer, 3" pivoting Kevlar® midrange, 1" pivoting aluminum dome tweeter, ±3dB midrange & treble contour switches and 200 watt power handling. Required for installation, the included PCB-C1000 bracket is designed for new construction as well as retrofit applications.

- Replaces C1030 Ceiling LCR Speaker
- Power Handling: 200 Watts
- Frequency Response: 40Hz - 22kHz
- Impedance: 4Ω

- Sensitivity: 92dB 1W/1m
- Includes Thin-Bezel Grille held by Neo Magnets
- Diameter x Depth: 13 $\frac{3}{8}$ " x 7 $\frac{5}{8}$ "
- Ceiling Cut Out: 11 $\frac{1}{8}$ "



### C871

U/M  
Each

One LCR ceiling speaker with woofer and tweeter bridge fixed at a 15° angle. 8" Kevlar® woofer and 1" pivoting aluminum dome tweeter, ±3dB bass & treble contour switches and 175 watt power handling.

- Replaces C870 Ceiling LCR Speaker
- Power Handling: 175 Watts
- Frequency Response: 28Hz - 22kHz
- Impedance: 8Ω

- Sensitivity: 92dB 1W/1m
- Includes Thin-Bezel Grille held by Neo Magnets
- Diameter x Depth: 11 $\frac{1}{8}$ " x 5 $\frac{7}{8}$ "
- Ceiling Cut Out: 9 $\frac{3}{4}$ "

### C841

U/M  
Each

One LCR ceiling speaker with woofer and tweeter bridge fixed at a 15° angle. 8" graphite woofer and 1" pivoting silk dome tweeter, ±3dB bass & treble contour switches and 150 watt power handling.

- Replaces C840 Ceiling LCR Speaker
- Power Handling: 150 Watts
- Frequency Response: 40Hz - 22kHz
- Impedance: 8Ω

- Sensitivity: 92dB 1W/1m
- Includes Thin-Bezel Grille held by Neo Magnets
- Diameter x Depth: 11 $\frac{1}{8}$ " x 5 $\frac{7}{8}$ "
- Ceiling Cut Out: 9 $\frac{3}{4}$ "



### C661

U/M  
Each

One LCR ceiling speaker with woofer and tweeter bridge fixed at a 15° angle. 6 $\frac{1}{2}$ " graphite woofer and 1" pivoting aluminum dome tweeter and 125 watt power handling.

- Replaces C660 Ceiling LCR Speaker
- Power Handling: 125 Watts
- Frequency Response: 36Hz - 22kHz
- Impedance: 8Ω

- Sensitivity: 92dB 1W/1m
- Includes Thin-Bezel Grille held by Neo Magnets
- Diameter x Depth: 9 $\frac{1}{4}$ " x 4 $\frac{9}{16}$ "
- Ceiling Cut Out: 8 $\frac{1}{4}$ "

### C656

U/M  
Each

One LCR ceiling speaker with woofer and tweeter bridge fixed at a 15° angle. 6 $\frac{1}{2}$ " graphite woofer and 1" pivoting silk dome tweeter and 100 watt power handling.

- Replaces C655 Ceiling LCR Speaker
- Power Handling: 100 Watts
- Frequency Response: 45Hz - 20kHz
- Impedance: 8Ω

- Sensitivity: 91dB 1W/1m
- Includes Thin-Bezel Grille held by Neo Magnets
- Diameter x Depth: 9 $\frac{1}{4}$ " x 5"
- Ceiling Cut Out: 8 $\frac{1}{4}$ "



### C651

U/M  
Each

One LCR ceiling speaker with woofer and tweeter bridge fixed at a 15° angle. 6 $\frac{1}{2}$ " polypropylene woofer and 1" pivoting silk dome tweeter and 100 watt power handling.

- Replaces C650 Ceiling LCR Speaker
- Power Handling: 100 Watts
- Frequency Response: 45Hz - 20kHz
- Impedance: 8Ω

- Sensitivity: 91dB 1W/1m
- Includes Thin-Bezel Grille held by Neo Magnets
- Diameter x Depth: 9 $\frac{1}{4}$ " x 4 $\frac{9}{16}$ "
- Ceiling Cut Out: 8 $\frac{1}{4}$ "

PROFICIENT

# Protege™

## Inwall LCR Speakers



### IW655

U/M  
Each

One inwall LCR speaker with two 6½" Kevlar™ woofers, 1" pivoting aluminum dome tweeter, ±3dB bass & treble contour switches and 150 watt power handling. Fits horizontally between 16" on-center wall studs.

- Replaces IW650 Inwall LCR Speaker
- Power Handling: 150 Watts
- Frequency Response: 50Hz - 20kHz
- Impedance: 8Ω
- Sensitivity: 90dB 1W/1m
- Includes Thin-Bezel Grille held by Neo Magnets
- Dimensions (H x W x D): 9" x 16½" x 3"
- Wall Cut Out (H x W): 7½" x 14½"

### IW630

U/M  
Each

One inwall LCR speaker with two 6½" graphite woofers, 1" pivoting soft dome tweeter, ±3dB bass & treble contour switches and 125 watt power handling. Fits horizontally between 16" on-center wall studs.

- Replaces IW625 Inwall LCR Speaker
- Power Handling: 125 Watts
- Frequency Response: 55Hz - 20kHz
- Impedance: 8Ω
- Sensitivity: 90dB 1W/1m
- Includes Thin-Bezel Grille held by Neo Magnets
- Dimensions (H x W x D): 9" x 16½" x 3"
- Wall Cut Out (H x W): 7½" x 14½"



### IW555

U/M  
Each

One inwall LCR speaker with two 5¼" Kevlar™ woofers, 1" pivoting aluminum dome tweeter, ±3dB bass & treble contour switches and 125 watt power handling.

- Replaces IW550 Inwall LCR Speaker
- Power Handling: 125 Watts
- Frequency Response: 60Hz - 20kHz
- Impedance: 8Ω
- Sensitivity: 88dB 1W/1m
- Includes Thin-Bezel Grille held by Neo Magnets
- Dimensions (H x W x D): 8" x 15½" x 3⅞"
- Wall Cut Out (H x W): 6¾" x 14½"

### IW530

U/M  
Each

One inwall LCR speaker with two 5¼" graphite woofers, 1" pivoting aluminum dome tweeter, ±3dB bass & treble contour switches and 100 watt power handling.

- Replaces IW525 Inwall LCR Speaker
- Power Handling: 100 Watts
- Frequency Response: 65Hz - 20kHz
- Impedance: 8Ω
- Sensitivity: 88dB 1W/1m
- Includes Thin-Bezel Grille held by Neo Magnets
- Dimensions (H x W x D): 8" x 15½" x 3⅞"
- Wall Cut Out (H x W): 6¾" x 14½"



PROFICIENT

# Protege<sup>™</sup>

## Inwall Speakers

### W852

U/M  
Pair

One pair of inwall speakers with 8" Kevlar<sup>®</sup> woofers, cast magnesium woofer baskets, 1" pivoting aluminum dome tweeters, ±3dB bass & treble contour switches and 175 watt power handling.

- Replaces W850 Inwall Speakers
- Power Handling: 175 Watts
- Frequency Response: 28Hz - 22kHz
- Impedance: 8Ω
- Sensitivity: 92dB 1W/1m
- Includes Thin-Bezel Grilles held by Neo Magnets
- Dimensions (H x W x D): 14<sup>7</sup>/<sub>8</sub>" x 10<sup>1</sup>/<sub>8</sub>" x 3<sup>3</sup>/<sub>4</sub>"
- Wall Cut Out (H x W): 13<sup>5</sup>/<sub>8</sub>" x 8<sup>3</sup>/<sub>4</sub>"



### W802

U/M  
Pair

One pair of inwall speakers with 8" graphite woofers, 1" pivoting aluminum dome tweeters, +3dB bass & treble contour switches and 150 watt power handling.

- Replaces W800 Inwall Speakers
- Power Handling: 150 Watts
- Frequency Response: 28Hz - 22kHz
- Impedance: 8Ω
- Sensitivity: 92dB 1W/1m
- Includes Thin-Bezel Grilles held by Neo Magnets
- Dimensions (H x W x D): 14<sup>7</sup>/<sub>8</sub>" x 10<sup>1</sup>/<sub>8</sub>" x 3<sup>3</sup>/<sub>4</sub>"
- Wall Cut Out (H x W): 13<sup>5</sup>/<sub>8</sub>" x 8<sup>3</sup>/<sub>4</sub>"

### W692

U/M  
Pair

One pair of inwall speakers with 6<sup>1</sup>/<sub>2</sub>" Kevlar<sup>®</sup> woofers, cast magnesium woofer baskets, 1" pivoting aluminum dome tweeters, +3dB bass & treble contour switches and 150 watt power handling.

- Replaces W690 Inwall Speakers
- Power Handling: 150 Watts
- Frequency Response: 32Hz - 22kHz
- Impedance: 8Ω
- Sensitivity: 92dB 1W/1m
- Includes Thin-Bezel Grilles held by Neo Magnets
- Dimensions (H x W x D): 12<sup>1</sup>/<sub>4</sub>" x 8<sup>3</sup>/<sub>16</sub>" x 3<sup>3</sup>/<sub>16</sub>"
- Wall Cut Out (H x W): 10<sup>7</sup>/<sub>8</sub>" x 6<sup>3</sup>/<sub>4</sub>"



### W682

U/M  
Pair

One pair of inwall speakers with 6<sup>1</sup>/<sub>2</sub>" graphite woofers, 1" pivoting aluminum dome tweeters, +3dB bass & treble contour switches and 125 watt power handling.

- Replaces W680 Inwall Speakers
- Power Handling: 125 Watts
- Frequency Response: 32Hz - 22kHz
- Impedance: 8Ω
- Sensitivity: 92dB 1W/1m
- Includes Thin-Bezel Grilles held by Neo Magnets
- Dimensions (H x W x D): 12<sup>1</sup>/<sub>4</sub>" x 8<sup>3</sup>/<sub>16</sub>" x 3<sup>3</sup>/<sub>16</sub>"
- Wall Cut Out (H x W): 10<sup>7</sup>/<sub>8</sub>" x 6<sup>3</sup>/<sub>4</sub>"

### W672

U/M  
Pair

One pair of inwall speakers with 6<sup>1</sup>/<sub>2</sub>" polypropylene woofers, 1" pivoting silk dome tweeters and 100 watt power handling.

- Replaces W670 Inwall Speakers
- Power Handling: 100 Watts
- Frequency Response: 36Hz - 20kHz
- Impedance: 8Ω
- Sensitivity: 91dB 1W/1m
- Includes Thin-Bezel Grilles held by Neo Magnets
- Dimensions (H x W x D): 12<sup>1</sup>/<sub>4</sub>" x 8<sup>3</sup>/<sub>16</sub>" x 3<sup>1</sup>/<sub>8</sub>"
- Wall Cut Out (H x W): 10<sup>7</sup>/<sub>8</sub>" x 6<sup>3</sup>/<sub>4</sub>"



### W667

U/M  
Pair

One pair of inwall speakers with 6<sup>1</sup>/<sub>2</sub>" polypropylene woofers, ¾" soft dome tweeters and 75 watt power handling.

- Replaces W665 Inwall Speakers
- Power Handling: 75 Watts
- Frequency Response: 45Hz - 20kHz
- Impedance: 8Ω
- Sensitivity: 90dB 1W/1m
- Includes Thin-Bezel Grilles held by Neo Magnets
- Dimensions (H x W x D): 12<sup>1</sup>/<sub>4</sub>" x 8<sup>3</sup>/<sub>16</sub>" x 3<sup>3</sup>/<sub>16</sub>"
- Wall Cut Out (H x W): 10<sup>7</sup>/<sub>8</sub>" x 6<sup>3</sup>/<sub>4</sub>"

PROFICIENT

# Protege™

## Twin-Tweeter Ceiling Speakers



### C825TT

**U/M**  
Each

One ceiling speaker with 8" dual voice coil graphite woofer, two 1" pivoting aluminum dome tweeters, +3dB bass & treble contour switches and 150 watt power handling.

- Replaces C800TT Single Stereo Ceiling Speaker
- Power Handling: 150 Watts
- Frequency Response: 28Hz - 22kHz
- Impedance: 8Ω
- Sensitivity: 92dB 1W/1m
- Includes Thin-Bezel Grille held by Neo Magnets
- Diameter x Depth: 11<sup>1</sup>/<sub>8</sub>" x 4<sup>1</sup>/<sub>4</sub>"
- Ceiling Cut Out: 9<sup>3</sup>/<sub>4</sub>"

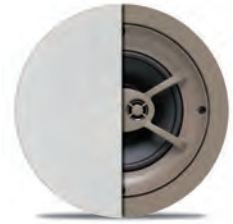
---

### C625TT

**U/M**  
Each

One ceiling speaker with 6<sup>1</sup>/<sub>2</sub>" dual voice coil polypropylene woofer, two 1/2" hard dome tweeters and 75 watt power handling.

- Replaces C600TT Single Stereo Ceiling Speaker
- Power Handling: 75 Watts
- Frequency Response: 36Hz - 20kHz
- Impedance: 8Ω
- Sensitivity: 92dB 1W/1m
- Includes Thin-Bezel Grille held by Neo Magnets
- Diameter x Depth: 9<sup>1</sup>/<sub>4</sub>" x 3<sup>5</sup>/<sub>8</sub>"
- Ceiling Cut Out: 8<sup>1</sup>/<sub>4</sub>"



# Proficient Signature Series

While Proficient is known for in-wall, in-ceiling, and outdoor speakers, the brand has recently launched a major effort to create a cabinet speaker and floor-standing sub that can suit the most demanding stereo and home theater jobs.

The GL6 and GS10 both have a beautiful black high-gloss finish with magnetically attached grilles and no visible fasteners.

The speakers are designed so they can be used with or without grilles. Whether you're setting up a high-quality music system or a deluxe home theater, the GL6 and GS10 can not only handle the job but handle it superbly.

The clarity and power of their sound are right up there with some of the finest speakers you'll ever hear.



## GL6 Flagship Dual 6½" LCR

U/M  
Each

One cabinet LCR speaker with two 6½" graphite woofers, 1" silk dome tweeter and 125 watt power handling. Features a seven-layer high-gloss black finish and wood framed grille with neo-magnets.

- Power Handling: 125 Watts
- Frequency Response: 46Hz - 20kHz
- Impedance: 4Ω
- Sensitivity: 89dB 1W/1m
- Cabinet Design
- Dimensions (H x W x D): 8" x 24" x 10½"



## GS10 Flagship 10" Sub

U/M  
Each

Powered subwoofer with 10" long-excursion pulp-composite cone woofer and 250 watt multi-voltage Class D Amp. Features a seven-layer high-gloss black finish, wood framed grille with neo-magnets and brushed aluminum feet.

- Power: 250 Watt RMS Class D Amp
- Frequency Response: 28Hz - 200Hz
- Input: Left & Right Line Level, LFE
- Phase Switch: 0 - 180°
- Protection: Overload Limiter Circuit
- Power On/Off: Auto Sensing
- Crossover: 50Hz - 150Hz
- Multi-Voltage
- Rear Port
- Dimensions (H x W x D): 13½" x 13½" x 14½"



# Legacy PS Series Powered Subwoofers



## PS12 Sub w/ Class D Amp

U/M  
Each

One subwoofer with 12" long excursion treated paper cone woofer and 250 watt multi-voltage Class D Amp. Slotted rear-firing port eliminates vent noise and distortion. Black wood grain finish and brushed aluminum feet.

- Power: 250 Watt RMS Class D Amp
- Frequency Response: 28Hz - 200Hz
- Input: Left & Right Line Level, LFE
- Phase Switch: 0 - 180°
- Protection: Overload Protection Circuit
- Power On/Off: Auto Sensing
- Port: Rear Slotted
- Dimensions (H x W x D): 18¼" x 14¼" x 17¼"

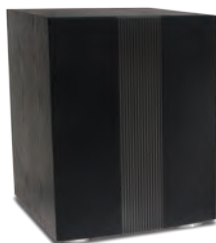
---

## PS10 Sub

U/M  
Each

One subwoofer with 10" long excursion treated paper cone woofer and 120 watt multi-voltage amplifier. Slotted rear-firing port eliminates vent noise and distortion. Black wood grain finish & aluminum feet.

- Power: 120 Watts RMS
- Frequency Response: 32Hz - 200Hz
- Input: Left & Right Line Level, LFE
- Phase Switch: 0 - 180°
- Protection: Overload Protection Circuit
- Power On/Off: Auto Sensing
- Port: Rear Slotted
- Dimensions (H x W x D): 15⅞" x 11½" x 17½"



## PS8 Sub

U/M  
Each

One subwoofer with 8" long excursion treated paper cone woofer and 80 watt multi-voltage amplifier. Slotted rear-firing port eliminates vent noise and distortion. Black wood grain finish & aluminum feet.

- Power: 80 Watts RMS
- Frequency Response: 45Hz - 200Hz
- Input: Left & Right Line Level, LFE
- Phase Switch: 0 - 180°
- Protection: Overload Protection Circuit
- Power On/Off: Auto Sensing
- Port: Rear Slotted
- Dimensions (H x W x D): 12⅜" x 9⅞" x 16"

# Outdoor / Indoor Speakers

## AW830wht | blk

U/M  
Pair



One pair of indoor/outdoor speakers with 8" polypropylene woofers, 3" graphite midrange, 1" pivoting soft dome tweeters and 175 watt power handling. Includes swivel mounting brackets. **Order in white or black.**

- Power Handling: 175 Watts
- Frequency Response: 35Hz - 20kHz
- Impedance: 4Ω
- Sensitivity: 89dB 1W/1m
- Dimensions (H x W x D): 15¾" x 8¾" x 8¾"



## AW650wht | blk

U/M  
Pair

One pair of indoor/outdoor speakers with 6½" polypropylene woofers, 1" pivoting Supernil soft dome tweeters and 150 watt power handling. Includes swivel mounting brackets. **Order in white or black.**

- Power Handling: 150 Watts
- Frequency Response: 37Hz - 20kHz
- Impedance: 8Ω
- Sensitivity: 89dB 1W/1m
- Dimensions (H x W x D): 11" x 7" x 6¼"

## AW525wht | blk

U/M  
Pair



One pair of indoor/outdoor speakers with 5¼" polypropylene woofers, 1" pivoting Supernil soft dome tweeters and 125 watt power handling. Includes swivel mounting brackets. **Order in white or black.**

- Power Handling: 125 Watts
- Frequency Response: 45Hz - 20kHz
- Impedance: 8Ω
- Sensitivity: 88dB 1W/1m
- Dimensions (H x W x D): 9¾" x 6½" x 6¾"



## AW400wht | blk

U/M  
Pair

One pair of indoor/outdoor speakers with 4" polypropylene woofers, ¾" Supernil soft dome tweeters and 100 watt power handling. Includes swivel mounting brackets. **Order in white or black.**

- Power Handling: 100 Watts
- Frequency Response: 55Hz - 20kHz
- Impedance: 8Ω
- Sensitivity: 87dB 1W/1m
- Dimensions (H x W x D): 7¾" x 5½" x 5½"

# Outdoor / Indoor Twin-Tweeter Speakers



## AW600TTwht | blk

U/M  
Each

One indoor/outdoor speaker with 6½" dual voice coil polypropylene woofer, two 1" pivoting Supernil soft dome tweeters and 125 watt power handling. Weather-resistant ABS housing, powder coated aluminum grille. Includes swivel mounting bracket. **Order in white or black.**

- Power Handling: 125 Watts
- Frequency Response: 50Hz - 20kHz
- Impedance: 4Ω
- Sensitivity: 91dB 1W/1m
- Dimensions (H x W x D): 7" x 12" x 8"

## AW500TTwht | blk

U/M  
Each

One indoor/outdoor speaker with 5¼" dual voice coil polypropylene woofer, two 1" pivoting Supernil soft dome tweeters and 100 watt power handling. Weather-resistant ABS housing, powder coated aluminum grille. Includes swivel mounting bracket. **Order in white or black.**

- Power Handling: 100 Watts
- Frequency Response: 60Hz - 20kHz
- Impedance: 4Ω
- Sensitivity: 89dB 1W/1m
- Dimensions (H x W x D): 7" x 11" x 6¼"



# Rocks

## R800G / R800S

U/M  
Pair

One pair of rock speakers with 8" graphite woofers, 1" polyamide dome tweeters and 90 watt power handling. **Order in granite or sandstone.**

- Power Handling: 90 Watts
- Frequency Response: 65Hz - 20kHz
- Impedance: 8Ω
- Sensitivity: 95dB 1W/1m
- Weather-Resistant Design
- Dimensions (H x W x D): 14½" x 14½" x 11"



## R650G / R650S

U/M  
Pair

One pair of rock speakers with 6½" graphite woofers, 1" polyamide dome tweeters and 60 watt power handling. **Order in granite or sandstone.**

- Power Handling: 60 Watts
- Frequency Response: 80Hz - 20kHz
- Impedance: 8Ω
- Sensitivity: 88dB 1W/1m
- Weather-Resistant Design
- Dimensions (H x W x D): 11½" x 9½" x 8¼"

# Cabinet Loudspeakers

## GL6 Flagship Dual 6½" LCR

U/M  
Each

One cabinet LCR speaker with two 6½" graphite woofers, 1" silk dome tweeter and 125 watt power handling. Features a seven-layer high-gloss black finish and wood framed grille with neo-magnets.

- Power Handling: 125 Watts
- Frequency Response: 46Hz - 20kHz
- Impedance: 4Ω
- Sensitivity: 89dB 1W/1m
- Cabinet Design
- Dimensions (H x W x D): 8" x 24" x 10½"



## CC550

U/M  
Each

One cabinet LCR speaker with two 5¼" Kevlar® woofers, 3" Kevlar® midrange, 1" aluminum dome tweeter and 125 watt power handling.

- Power Handling: 125 Watts
- Frequency Response: 40Hz - 20kHz
- Impedance: 8Ω
- Sensitivity: 88dB 1W/1m
- Cabinet Design
- Dimensions (H x W x D): 6¾" x 20½" x 8¾"

## CC540

U/M  
Each

One cabinet LCR speaker with two 5¼" graphite woofers, 3" graphite midrange, 1" aluminum dome tweeter and 100 watt power handling.

- Power Handling: 100 Watts
- Frequency Response: 70Hz - 20kHz
- Impedance: 8Ω
- Sensitivity: 89dB 1W/1m
- Cabinet Design
- Dimensions (H x W x D): 6¾" x 20½" x 8¾"



## CC400

U/M  
Each

One cabinet LCR speaker with two 4" polypropylene woofers, 1" aluminum dome tweeter and 85 watt power handling.

- Power Handling: 85 Watts
- Frequency Response: 80Hz - 20kHz
- Impedance: 8Ω
- Sensitivity: 89dB 1W/1m
- Cabinet Design
- Dimensions (H x W x D): 5½" x 20" x 7¼"

# Speaker Selectors



## SS4VC

U/M  
Each

Four-pair transformer-based on/off speaker selector with volume controls provides quick, convenient access for up to four stereo pairs. 60 watts power handling per channel, rear override switch for circuit protection and suction feet for stable operation.

- Power Handling: 60 Watts per Channel
- Frequency Response: 20Hz - 20kHz
- Protection: Front Mounted Switch & Rear Override
- Includes Area Labels
- Dimensions (H x W x D): 2<sup>3</sup>/<sub>16</sub>" x 17" x 6<sup>13</sup>/<sub>32</sub>"



## SS8P

U/M  
Each

Eight-pair resistor-based on/off speaker selector provides quick, convenient access for up to eight stereo pairs. 125 watts power handling per channel, rear override switch for circuit protection and suction feet for stable operation.

- Power Handling: 125 Watts per Channel
- Frequency Response: 20Hz - 20kHz
- Protection: Front Mounted Switch & Rear Override
- Includes Area Labels
- Dimensions (H x W x D): 2<sup>3</sup>/<sub>16</sub>" x 17" x 6<sup>13</sup>/<sub>32</sub>"



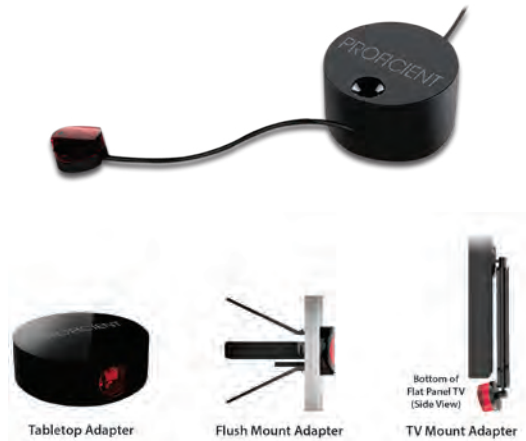
## SS4P

U/M  
Each

Four-pair resistor-based on/off speaker selector provides quick, convenient access for up to four stereo pairs. 125 watts power handling per channel, rear override switch for circuit protection and suction feet for stable operation.

- Power Handling: 125 Watts per Channel
- Frequency Response: 20Hz - 20kHz
- Protection: Front Mounted Switch & Rear Override
- Includes Area Labels
- Dimensions (H x W x D): 2<sup>3</sup>/<sub>16</sub>" x 8<sup>3</sup>/<sub>8</sub>" x 6<sup>13</sup>/<sub>32</sub>"

# Infrared Kits



## Proficient One Universal IR Kit

Shipping  
Now

U/M  
Each

Proficient One is the only IR kit needed for any application, containing all components for a one room system setup. The revolutionary new micro IR receiver design provides tremendous installation flexibility. Includes snap-in adapters for tabletop, TV mount and flush mount applications. Compatible with most plasma, LCD, LED, OLED and DLP TVs.

- Replaces all previous Proficient IR Kits
- (1) Micro IR Sensor
- (1) Tabletop Adapter
- (1) TV Mount Adapter
- (1) Flush Mount Adapter
- (1) IR Router
- (2) IR Dual Flashers
- (1) IR Power Supply

## IR Shelf Top Kit

U/M  
Each

Contains all components needed for a one room system setup. Includes the following IR components:

- (1) IR Shelf Top Receiver
- (1) IR Router
- (1) IR Power Supply–250mA
- (4) IR Single Flashers



## IR Plasma Kit

U/M  
Each

Compatible with most Plasma, LCD, LED and DLP. Contains all components needed for a one room system setup. Includes the following IR components:

- (1) IR Plasma Receiver
- (1) IR Router
- (1) IR Power Supply–250mA
- (4) IR Single Flashers

## IR Mini-blk Kit

U/M  
Each

Contains all components needed for a one room system setup. Includes the following IR components:

- (1) IR Mini Receiver–blk
- (1) IR Router
- (1) IR Power Supply–250mA
- (4) IR Single Flashers



## IR Fish Eye Kit

U/M  
Each

Compatible with most Plasma, LCD, LED and DLP. Contains all components needed for a one room system setup. Includes the following IR components:

- (1) IR Fish Eye Receiver
- (1) IR Router
- (1) IR Power Supply–250mA
- (4) IR Single Flashers

# Infrared Components



## IR Shelf Top Receiver

U/M  
Each

Shelf-top IR receiver features Ambient Noise Suppression and LEDs to indicate system status and IR activity. IR Terminal included for easy, no-cut connection.  
• Dimensions (L x W x D): 1 $\frac{1}{8}$ " x 3 $\frac{3}{16}$ " x 1 $\frac{1}{16}$ "

## IR Plasma Receiver

U/M  
Each

Super small, surface-mount IR plasma receiver. Two-piece design separates the receiver from the "Smart Circuit" electronics package for clean looking installation. The "Smart Circuit" blocks interference from plasmas or CFLs. LEDs indicate system status and IR activity. IR Terminal included for easy, no-cut connection. Compatible with most Plasma, LCD, LED and DLP.



## IR Mini Receiver-blk

U/M  
Each

Surface-mount mini IR receiver features Ambient Noise Suppression and LEDs to indicate system status and IR activity. IR Terminal included for easy, no-cut connection.  
• Dimensions (L x W x D): 2 $\frac{9}{16}$ " x 1 $\frac{7}{32}$ " x  $\frac{9}{16}$ "

## IR Fish Eye Receiver

U/M  
Each

Flush-mount IR receiver features Ambient Noise Suppression and LEDs to indicate system status and IR activity. Includes four flavors of bezels (white, black, almond, and bone) and two Ambient Light Restrictor (ALR) bezels for severe plasma or CFL environments. IR Terminal included for easy, no-cut connection. Compatible with most Plasma, LCD, LED and DLP.

- Dimensions (Dia x L) : 1 $\frac{5}{32}$ " x 2 $\frac{5}{8}$ "
- Color Bezel (Dia x L): 4 $\frac{7}{64}$ " x  $\frac{1}{8}$ "

- ALR Bezel (Dia x L): 4 $\frac{7}{64}$ " x 2 $\frac{3}{64}$ "



## IR Router

U/M  
Each

Central router for all Proficient IR systems. Controls IR receivers and IR Flashers. Equipped with 3.5mm mini jacks for quick connection of IR Receivers and Flashers. Multiple IR Routers can be cascaded for additional IR Flasher output jacks.

## IR Power Supply-250mA

U/M  
Each

12V DC, 250mA regulated power supply designed for use in small to moderate IR systems. Powers the IR Receivers, IR Router and IR Flashers.



## IR Single Flasher

U/M  
Each

LED flashes red to indicate operation. Features docking port which allows quick installation of IR Flasher on a component, as well as easy removal of IR Flasher. Includes an 8' wire for painless hookup to IR Router.

## IR Dual Flasher

U/M  
Each

LEDs flash red to indicate operation. Features docking ports which allow quick installation of IR Flashers on components, as well as easy removal of IR Flashers. The Dual IR Flasher splits to two 8' wires for easy hookup to IR Router.



# MultiRoom Controllers

## M6 MultiRoom Receiver

U/M  
Each



Distributed audio receiver that plays right out of the box. Runs six zones, has dual tuners built-in and will accommodate six source components. Has 12 channels of digital amplification with 30 watts per channel. Includes six PMKIR single-gang keypads with built-in IR receiver and six IR Single Flashers. Keypads feature installer-configurable buttons. Both AM/FM tuners have 10 presets per zone. Program the M6 via Proficient Editor software. Includes bolt-on rack ears. Expandable to 24 zones and eight sources.

- Premium Cast Aluminum Faceplate
- Six Zone Audio Receiver
- Six source inputs + 2 AM/FM Tuners
- Power: 30 Watts x 12 Channels
- Telephone Paging & Doorbell Mute
- All Digital Amplification
- Includes Six PMKIR Master Keypads w/IR
- Includes Six IR Single Flashers & Bolt-On Rack Ears
- Includes Programming Cable
- Programmable via Proficient Editor software
- Dimensions (H x W x D): 5<sup>3</sup>/<sub>16</sub>" x 17<sup>1</sup>/<sub>8</sub>" x 15<sup>1</sup>/<sub>2</sub>"
- Weight: 26 lbs

## M4 MultiRoom Controller



U/M  
Each

Distributed audio controller. Hook it up and it immediately runs without any programming. Plays 4 zones and 6 component sources. Features 8 channels of digital amplification with 30 watts per channel. Includes four PMKIR single-gang keypads with built-in IR receiver and six IR Single Flashers. Keypads have installer-configurable buttons. Program the M4 via Proficient Editor software. Includes bolt-on rack ears. Expandable to 16 zones and 6 sources.



- Premium Cast Aluminum Faceplate
- Four zone audio controller
- Six Source Inputs
- Power: 30 Watts x 8 Channels
- Telephone Paging & Doorbell Mute
- All Digital Amplification
- Includes Four PMKIR Master Keypads w/IR
- Includes Six IR Single Flashers & Bolt-On Rack Ears
- Includes Programming Cable
- Programmable via Proficient Editor software
- Dimensions (H x W x D): 5<sup>3</sup>/<sub>16</sub>" x 17<sup>1</sup>/<sub>8</sub>" x 15<sup>1</sup>/<sub>2</sub>"
- Weight: 20 lbs

# Color Source Keypad & Dock

## The Source Keypad wht

U/M  
Each



Designed specifically for Proficient M4 & M6, The Source Keypad creates the ultimate media control experience by providing real-time system status, menu-driven control options, and source metadata with its high-resolution color LCD. Menu options include system source selection, internal tuner presets with frequency (when used with M6), iPod® menus and metadata as well as a variety of keypad setup options.

- High-Res, 64K Color (16 Bit) LCD Display
- Menu, Source Component & Metadata Display
- Fully Retrofit Compatible with PMKIR Installations
- Easy Navigation Scroll Wheel
- Volume Control Knob w/Back-Lit Level Indicator
- 7 Back-Lit, Configurable 'Hard Keys'
- Built-In IR Receiver
- Fits Most Dual Gang Electrical Boxes
- Includes White bezel

## The Source Dock wht

U/M  
Each

The Source Dock and The Source Dock Adapter provide an enhanced interface when used in conjunction with The Source Keypad and M4 or M6. Universal style dock is compatible with most iPod® models. Also charges the iPod and allows USB connection to computer for syncing with iTunes. The Source Dock and The Source Dock Adapter ship together in one convenient package (every Source Dock requires a Source Dock Adapter). Linking Dock Adapters allow up to Six Source Docks per system.

- Converts iPod Audio into a Balanced Audio Signal
- Converts iPod Serial Data to RS485 Data
- RJ45 Jack for CAT5 Connection to Dock Adapter
- USB Port for Syncing iPod to Computer
- Auxiliary Audio Input
- Designed Specifically for Proficient M4 & M6
- Includes (1) iPod-Compatible Source Dock
- Includes (1) Source Dock Adapter
- Includes (1) Stereo Mini to RCA Audio Cable
- Requires The Source Power Supply



## The Source Power Supply

U/M  
Each

24V DC 2.5 Amp Power Supply for the Source Dock. Supports up to six Dock Adapters.



# Controller Keypads & Accessories

## PMKIR

U/M  
Each

Single-gang Master keypad with built-in IR receiver. All buttons are removable and configurable. Includes extra buttons to customize any job. **MUST be connected to a Proficient M4 or M6.**

- Single-Gang Keypad
- Built-In IR Receiver
- 8 Source Select Buttons
- 7 Source Buttons Can Be Programmed For Function Control (One Of The 8 Must Be For Source Selection)
- 4 Additional Buttons Can Be Programmed For Any Function Excluding Source Selection
- Includes Extra Buttons for Custom Configuration
- Includes White, Bone and Almond Plates & Inserts



## PMK

U/M  
Each

Single-gang Master keypad. All buttons are removable and configurable. Includes extra buttons to customize any job. **MUST be connected to a Proficient M4 or M6.**

- Single-Gang Keypad
- 8 Source Select Buttons
- 7 Source Buttons Can Be Programmed For Function Control (One Of The 8 Must Be For Source Selection)
- 5 Additional Buttons Can Be Programmed For Any Function Excluding Source Selection
- Includes Extra Buttons For Custom Configuration
- Includes White, Bone and Almond Plates & Inserts

## PFK

U/M  
Each

Function keypad **must be connected to a PMKIR or PMK Master keypad.** Features 14 custom configurable buttons. Includes extra buttons with text and icons to customize any job.

- 14 Configurable Buttons
- Includes Ribbon Cable for Connection to PMKIR or PMK
- Includes Extra Buttons for Custom Configuration
- Includes White, Bone and Almond Inserts



Shown with Optional Wall Plate (Not Included)



Shown with Optional Wall Plate (Not Included)

## PNK

U/M  
Each

Numeric keypad **must be connected to a PMKIR or PMK Master keypad.** Features 16 custom configurable buttons: 10 numeric and 6 function. Includes extra buttons with text and icons to customize any job.

- 16 Configurable Buttons
- Includes Ribbon Cable for Connection to PMKIR or PMK
- Includes Extra Buttons for Custom Configuration
- Includes White, Bone and Almond Inserts

## Command Interface Kit

U/M  
Each

Contains everything you need to connect and program an M4 or M6 from your laptop. Includes:

- (1) Command Interface
- (1) USB to DB9 adapter cable
- (1) 6' DB9 to Quad 3.5mm Plug Transfer Cable
- (1) Power Supply



## Control Module

U/M  
Each

This Proficient Control Module is specifically programmed to interface Proficient M4 or M6 and Third-Party Control Platforms. The RS232 Data I/O connects directly to the Third-Party Control Hardware, and the Expansion Port connects to M4 or M6 via CAT5 cable.

- Communication Interface for M4 & M6
- Expansion Port RS232 Buffer for External Control
- Connects via Cat5 to M4 or M6 Expansion Port
- RS232 9-Pin Male Data I/O

# Volume Controls



## VC60i

U/M  
Each

60-watt impedance-balancing volume control with autoformer. Features quick & secure wire connecting system. Fits in most single-gang J-boxes and plaster rings. Includes white, bone and almond plates, inserts and knobs.

- Power Handling: 60 Watts Continuous  
120 Watts Peak Music Power
- Frequency Response: 20Hz - 20kHz
- Steps: 12 (Make Before Break)
- Total Attenuation: 42dB (Max)
- Depth: 2½" Behind Plate

## VC45i

U/M  
Each

45-watt impedance-balancing volume control with autoformer. Features removable wire block terminal for easy connection. Fits in most single-gang J-boxes and plaster rings. Includes white, bone and almond plates, inserts and knobs.

- Power Handling: 45 Watts Continuous  
90 Watts Peak Music Power
- Frequency Response: 20Hz - 20kHz
- Steps: 10 (Make Before Break)
- Total Attenuation: 42dB (Max)
- Depth: 2½" Behind Plate



## VCS60

U/M  
Each

60-watt stereo volume control with autoformer. Features quick & secure wire connecting system. Fits in most single-gang J-boxes and plaster rings. Includes white, bone and almond plates, inserts and knobs.

- Power Handling: 60 Watts Continuous  
120 Watts Peak Music Power
- Frequency Response: 20Hz - 20kHz
- Steps: 12 (Make Before Break)
- Total Attenuation: 42dB (Max)
- Depth: 2½" Behind Plate

## VC60SL

U/M  
Each

60-watt slider stereo volume control with removable screw down wire terminal design. Fits in most single-gang J-boxes and plaster rings. Includes white, bone and almond plates, inserts and sliders.

- Power Handling: 60 Watts Continuous  
120 Watts Peak Music Power
- Frequency Response: 20Hz - 20kHz
- Steps: 12 (Make Before Break)
- Total Attenuation: 42dB (Max)
- Dimensions (H x W x D): 4" x 1⅝" x 3⅛"



## VC60AW

U/M  
Each

60-watt weather-resistant volume control sealed against dust and moisture. Fits onto ¾" conduit or can be surface mounted. Available in Gray.

- Power Handling: 60 Watts Continuous  
120 Watts Peak Music Power
- Frequency Response: 20Hz - 20kHz
- Steps: 12 (Make Before Break)
- Total Attenuation: 42dB (Max)
- Dimensions (H x W x D): H 4½" x W 2¾" x D 3½"

# Pre-Construction Brackets

## PCB-C800

U/M  
Pair

One pair of pre-construction brackets for new construction. Fits 8" ceiling speakers, 8" single stereo ceiling speakers and 8" ceiling LCR speakers.



## PCB-C600

U/M  
Pair

One pair of pre-construction brackets for new construction. Fits 6½" ceiling speakers, 6½" single stereo ceiling speakers and 6½" ceiling LCR speakers.

## PCB-C500

U/M  
Pair

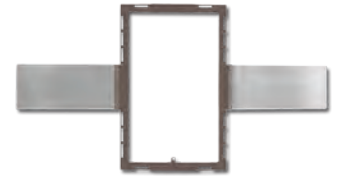
One pair of pre-construction brackets for new construction. Fits 5¼" ceiling speakers.

---

## PCB-W800

U/M  
Pair

One pair of pre-construction brackets for new construction. Fits 8" inwall speakers.



## PCB-W600

U/M  
Pair

One pair of pre-construction brackets for new construction. Fits 6½" inwall speakers.

---

## PCB-C800 Extension Wings

U/M  
Pair

One pair of 15" extension wings for PCB-C800 pre-construction brackets.



## PCB-C600 Extension Wings

U/M  
Pair

One pair of 15" extension wings for PCB-C600 pre-construction brackets.

## PCB-C500 Extension Wings

U/M  
Pair

One pair of 15" extension wings for PCB-C500 pre-construction brackets.

---

## PCB-IW600

U/M  
Each

One each pre-construction bracket for new construction. Fits 6½" inwall LCR speakers.



## PCB-IW500

U/M  
Each

One each pre-construction bracket for new construction. Fits 5¼" inwall LCR speakers.

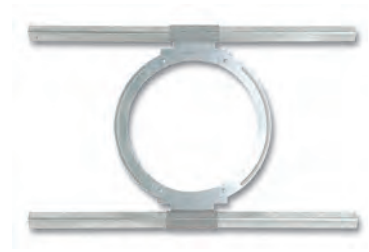


# Ceiling Tile Brackets

## CTB-C800

U/M  
Each

One each ceiling tile bracket used in drop ceiling and T-bar type ceiling applications. Fits 8" ceiling speakers, 8" single stereo ceiling speakers and 8" ceiling LCR speakers.



## CTB-C600

U/M  
Each

One each ceiling tile bracket used in drop ceiling and T-bar type ceiling applications. Fits 6½" ceiling speakers, 6½" single stereo ceiling speakers and 6½" ceiling LCR speakers.

---

## Back Boxes



## BB-IWS10

U/M  
Each

Medium Density Fiberboard (MDF) back box for the IWS105 & IWS100 inwall subs, designed to fit any standard 16" stud bay. Cuts down on translational energy vibration between adjacent walls. The IWS105 & IWS100 subs are tuned to the BB-IWS10 back box. *Not for use with ICS11, ICS10, IWS85 and IWS82.*

• Dimensions (H x W x D): 42¾" x 14¾" x 3¼"

---

## BB-C800

U/M  
Each

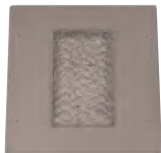
One metal back box for 8" ceiling speakers, 8" single stereo ceiling speakers and 8" ceiling LCR speakers. **UL 263-03 1-hour fire rating.**



## BB-C650

U/M  
Each

One metal back box for 6½" ceiling speakers, 6½" single stereo ceiling speakers and 6½" ceiling LCR speakers. CMB-24 mounting bars are needed when installing in ceiling joists 24" on-center or suspended ceilings. **UL 263-03 1-hour fire rating.**



## BB-W600

U/M  
Each

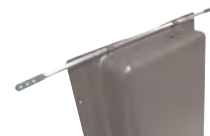
One metal back box for 6½" inwall speakers. **UL 263-03 1-hour fire rating.**

---

## CMB-24

U/M  
Pair

One pair of ceiling mounting bars slip into clips on BB-C650 back box. For installation in ceiling joists 24" on-center or suspended ceilings.



# Speaker Cover Plates



## CPC-800

One pair of white cover plates for 8" ceiling speakers, 8" single stereo ceiling speakers and 8" ceiling LCR speakers.

U/M  
Pair

## CPC-600

One pair of white cover plates for 6½" ceiling speakers, 6½" single stereo ceiling speakers and 6½" ceiling LCR speakers.

U/M  
Pair

## CPW-600

One pair of white cover plates for 6½" inwall speakers.

U/M  
Pair



# Replacement Speaker Grilles



## Protege 5¼" Ceiling Grille

Compatible with Proficient Protege 5¼" Ceiling Speakers

U/M  
Each

## Protege 6½" Ceiling Grille

Compatible with Proficient Protege 6½" 2-Way, LCR & Single Stereo Ceiling Speakers

U/M  
Each



## Protege 8" Ceiling Grille

Compatible with Proficient Protege 8" 2-Way, LCR & Single Stereo Ceiling Speakers

U/M  
Each

## Protege 10" Ceiling LCR Grille

Compatible with Proficient Protege 10" Ceiling LCR Speakers

U/M  
Each



# Replacement Speaker Grilles

## Protege 6½" Inwall Grille

Compatible with Proficient Protege 6½" Inwall Speakers

U/M  
Each



## Protege 8" Inwall Grille

Compatible with Proficient Protege 8" Inwall Speakers

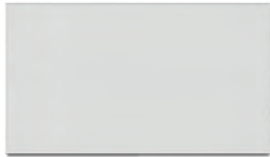
U/M  
Each

---

## Protege 5¼" Inwall LCR Grille

Compatible with Proficient Protege 5¼" Dual Woofer Inwall LCR Speakers

U/M  
Each



## Protege 6½" Inwall LCR Grille

Compatible with Proficient Protege 6½" Dual Woofer Inwall LCR Speakers

U/M  
Each

---

## Protege 8" Inwall Sub Grille

Compatible with Proficient Protege 8" Dual Woofer Inwall Subwoofers

U/M  
Each



## Protege 10" Inwall Sub Grille

Compatible with Proficient Protege 10" Inwall Subwoofers

U/M  
Each

---

## Protege 10" Ceiling Sub Grille

Compatible with Proficient Protege 10" Ceiling Subwoofers

U/M  
Each



# Replacement Speaker Grilles



## AW400 White Grille

Compatible with AW400wht Indoor/Outdoor Speakers

U/M  
Pair

## AW400 Black Grille

Compatible with AW400blk Indoor/Outdoor Speakers

U/M  
Pair

---

## AW525 White Grille

Compatible with AW525wht Indoor/Outdoor Speakers

U/M  
Pair

## AW525 Black Grille

Compatible with AW525blk Indoor/Outdoor Speakers

U/M  
Pair



## AW650 White Grille

Compatible with AW650wht Indoor/Outdoor Speakers

U/M  
Pair

## AW650 Black Grille

Compatible with AW650blk Indoor/Outdoor Speakers

U/M  
Pair

---

## AW830 White Grille

Compatible with AW830wht Indoor/Outdoor Speakers

U/M  
Pair

## AW830 Black Grille

Compatible with AW830blk Indoor/Outdoor Speakers

U/M  
Pair



## AW500TT White Grille

Compatible with AW500TTwht TT Indoor/Outdoor Speakers

U/M  
Each



## AW500TT Black Grille

Compatible with AW500TTblk TT Indoor/Outdoor Speakers

U/M  
Each

---

## AW600TT White Grille

Compatible with AW600TTwht TT Indoor/Outdoor Speakers

U/M  
Each

## AW600TT Black Grille

Compatible with AW600TTblk TT Indoor/Outdoor Speakers

U/M  
Each



# PROFICIENT®

1800 S McDowell Blvd • Petaluma, CA 94954 • 800.472.5555 • Fax 707.283.5901 • [proficientaudio.com](http://proficientaudio.com)

©2014 Core Brands, LLC. All rights reserved. Proficient® is a registered trademark of Core Brands, LLC, a Nortek company.

*iPod is a trademark of Apple, Inc., registered in the U.S. & other countries*

*Kevlar is a registered trademark of DuPont*

PB0914-C