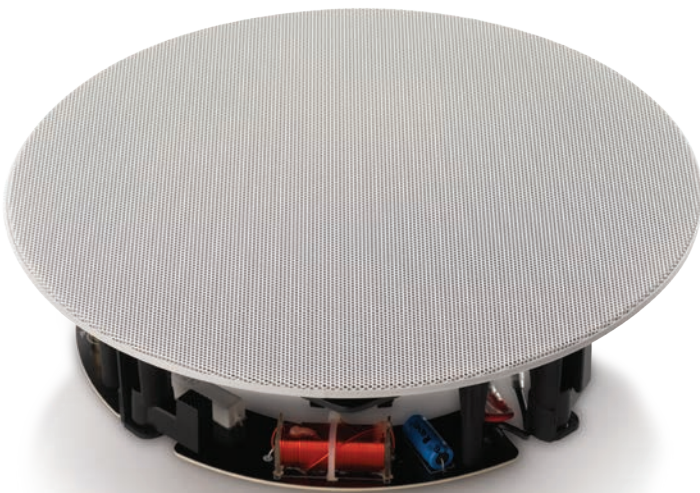


**DIGITAL  
CINEMA**

**AVAILABLE AT  
DIGITAL CINEMA**



REVEL® EXTREME CLIMATE FLUSH-MOUNT  
LOUDSPEAKERS

 **REVEL®**  
The World's Finest Loudspeakers



## REVEL® EXTREME CLIMATE LOUDSPEAKERS

No longer must you sacrifice sound quality in the name of durability and style. The XC Series combines Revel's award-winning sound and design with durability that survives the toughest elements. Perfect for indoor and outdoor locations and anyplace that is hot, cold, damp, humid, or wet, the shallow-depth XC flush-mount models fit just about anywhere. Revel's unobtrusive Zero-bezel, magnetically attached grilles deliver on style with a look that allows the speakers to blend easily into any décor. This beauty is more than skin-deep with Revel's low-distortion Aluminum cone woofer and articulate Aluminum dome tweeter engineered for true audiophile performance.

Revel's XC Series flush-mount loudspeakers are available in two sizes: the C363XC 6.5-inch (165mm) 2-way design and the C383XC 8-inch (200mm) 2-way design. With a style and sound that perfectly matches Revel's no-compromise range of architectural loudspeakers, the XC Series flush-mount models seamlessly integrate into environments where moisture, wind, and dust are of primary concern.

## DESIGNED FOR TOUGH ENVIRONMENTS

XC flush-mount loudspeakers have been specifically engineered and rigorously tested to perform to Revel's exacting standards under conditions that would make traditional architectural speakers wither. Rated to meet IP65 standards for dust and water resistance, XC models are guaranteed to perform in harsh conditions. Indoor locations such as showers and saunas and outdoor locations under eaves, and around patios and decks are perfect applications for XC flush-mount models. Their marine-grade components even make them suitable for yachts, power boats, and other marine vehicles where durability, high-performance sound, and stylish appearances are necessary. The shallow mounting depth required – less than 2.75-inches (70mm) – and extremely thin finished grille design allows them to fit into difficult locations where others cannot.





## MODERN LOOK AND FUNCTIONAL DESIGN

Requiring less than 2.75-inches (70mm) mounting depth, the C363XC and C383XC provide an ideal installation solution in applications where depth is a concern. Zero-bezel magnetic grilles offer a modern design and elegant appearance. The marine-grade 6.5-inch (165mm) and 8-inch (200mm) round Extreme Climate grilles are identical in appearance to the rest of the Revel Architectural in-wall and in-ceiling models providing cohesive aesthetics throughout the home. With black woofers and tweeters and an all black baffle, the C363XC and C383XC can be used without a grille scrim-cloth and still remain visually unobtrusive.

## REVEL SOUND QUALITY

Revel loudspeakers are known for their outstanding sound quality and the XC models are no exception. Featuring superior materials including a 1-inch (25mm) Aluminum dome tweeter with phase ring and powerful cast-frame, Aluminum cone woofers, the XC models utilize advanced engineering and design to achieve the ultimate in performance for any given application. As with all Revel loudspeakers, the XC Series has been proven to perform in double-blind listening tests against the competition.



## RATED TO PERFORM

Revel XC Series loudspeakers feature weatherized components and construction and meet IP65 (International Protection Rating) standards for solid materials and water ingress exposure. With the IP65 rating, they are fully protected against dust and water jets from all directions making them ideal for outdoor and marine applications.



## SPECIFICATIONS



### C363XC

- » 6-1/2" (165mm) Aluminum Cone, Cast-polymer frame woofer
- » 1" Aluminum dome tweeter with phase ring
- » Mounting depth: 2.72" (69.1mm)
- » Weight: 3.1 lb (1.41kg) / Shipping weight: 4.6 lb (2.1kg)
- » Extreme Climate Zero-bezel round magnetic grille
- » Finished grille dimension (dia.): 9.1" (23.1cm)
- » Cutout dimensions (dia.): 8" (20.3cm)
- » Nominal impedance: 8 ohms
- » Recommended amplifier power range: 10-100 watts
- » Sensitivity (2.83V/1m): 85dB
- » Frequency range -3dB from 50-15kHz; -10dB from 36-18kHz



### C383XC

- » 8" (200mm) Aluminum Cone, Cast-polymer frame woofer
- » 1" Aluminum dome tweeter with phase ring
- » Mounting depth: 2.69" (68.3mm)
- » Weight: 3.9 lb (1.8kg) / Shipping weight: 5.9 lb (2.7kg)
- » Extreme Climate Zero-bezel round magnetic grille
- » Finished grille dimension (dia.): 10.7" (27.2cm)
- » Cutout dimensions (dia.): 9.6" (24.4cm)
- » Nominal impedance: 8 ohms
- » Recommended amplifier power range: 10-100 watts
- » Sensitivity (2.83V/1m): 87dB
- » Frequency range -3dB from 45-15kHz; -10dB from 33-18kHz



© 2015 HARMAN International Industries, Incorporated. All rights reserved.  
Revel and the Revel logo are registered trademarks of HARMAN International Industries, Incorporated.  
Features, specifications and appearance are subject to change without notice.



HARMAN International Industries, Incorporated.  
8500 Balboa Blvd. Northridge, CA 91329 USA  
[www.RevelSpeakers.com](http://www.RevelSpeakers.com)