

**DIGITAL
CINEMA**

**AVAILABLE AT
DIGITAL CINEMA**



REVEL® IN-CEILING LOUDSPEAKERS

 **REVEL**®
by HARMAN

The World's Finest Loudspeakers



REVEL® IN-CEILING LOUDSPEAKERS

Presenting an entirely new range of in-ceiling loudspeakers that combine Revel® best-in-class sound quality with a new mechanism and a sleek new look that integrates easily into any décor.

For true audiophile performance and easy timbre-matching to Revel in-wall, floorstanding, monitor and center-channel loudspeakers, all models* feature Revel low-distortion motor-structure designs with aluminum-dome tweeters and Micro-Ceramic Composite (MCC) cone woofers. This allows for easy integration into home cinema systems.

SLEEK NEW LOOK THAT INTEGRATES EASILY INTO ANY DÉCOR

The new C-2 installation mechanism** is quick and easy and accommodates a wide variety of construction types and wall thicknesses up to two inches.

For the finishing touch, frameless grilles attach magnetically, giving the loudspeaker an elegant, yet unobtrusive look. All twelve in-ceiling loudspeaker models* include both round and square grilles to provide a perfect match for existing ceiling fixtures and lighting.

This new in-ceiling loudspeaker product line offers a solution for any application ranging from background audio to high-end multichannel home theater installations, proving once again that Revel builds the World's Finest Loudspeakers.

* Except 2-Series

** Not available with C540 model

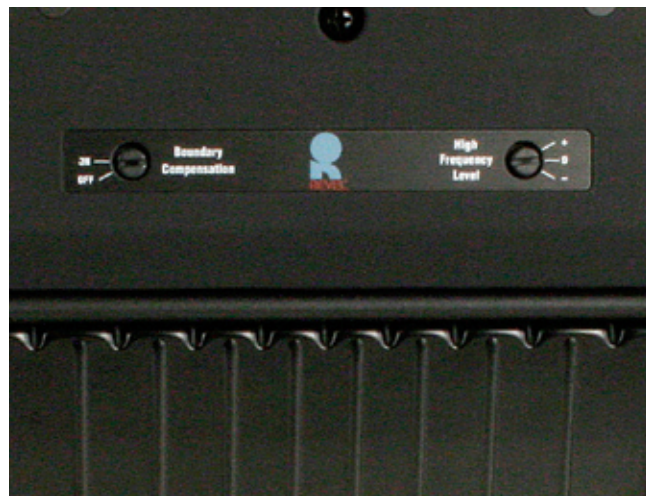


TWEETER WAVEGUIDE ASSEMBLY

High-frequencies are reproduced from minimum diffraction, acoustically optimized tweeter waveguide pods. Waveguides match the dispersion of the tweeter and woofer through the crossover region, resulting in smooth response over a wide listening area. The offset placement significantly reduces acoustic anomalies that occur with traditional coaxial or “bridge-mounted” tweeter in-ceiling speaker designs.

PROVEN SUPERIOR SOUND

All twelve in-ceiling loudspeaker models have undergone exclusive HARMAN double-blind listening tests, proving their sound quality superior to that of their competitors. The premium components of the Revel in-ceiling loudspeakers include the high-performance tweeters with waveguide, high-order crossovers and cast-frame drivers.



HIGH FREQUENCY AND BOUNDARY GAIN COMPENSATION

High Frequency (HF) level controls and Boundary Gain Compensation (BGC) controls are valuable features to optimize performance in a variety of applications. Both the 5- and 7-Series models have HF level control switches, and the 7-Series models have a BGC On/Off switch control. The HF level control helps adjust the sound for unusually damped or live rooms, while the BGC switch provides low-frequency compensation when the loudspeakers must be placed very close to a wall.

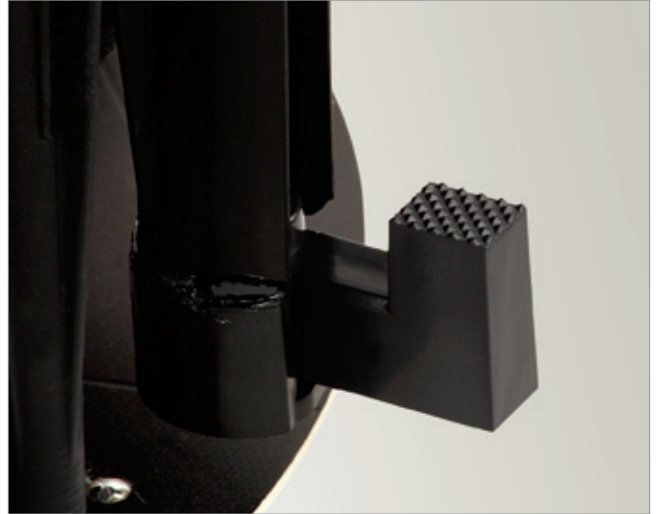
NEW C-2 INSTALLATION MECHANISM

A new mounting method improves on traditional mechanisms by accommodating material up to two inches thick. This new installation method provides a firm mechanical grip to minimize resonances.



COHESIVE AESTHETICS

The industrial design that has been created for the in-ceiling loudspeaker line allows for a very unobtrusive, clean look in home applications. With minimal visual impact, the installed speakers provide cohesiveness within the room, as well as maximum sound quality and performance. The Revel bezel-free design enables these speakers to become virtually invisible within the room.



ZERO-BEZEL MAGNETIC GRILLES

The zero-bezel grilles provide an unobtrusive look that allows the product to blend in seamlessly with its surroundings. The ultra-thin design attaches magnetically and completely covers the speaker. The lack of a traditional bezel on the speaker reduces labor when painting the grilles, as no paint mask is required.



6-1/2" IN-CEILING LOUDSPEAKERS



C263

- » 6-1/2" Aluminum Cone, Cast-Polymer Frame Woofer
- » 1" Aluminum-Dome Swiveling Tweeter with Waveguide
- » Sensitivity: 86dB @ 2.83V, 1m
- » Recommended Amplifier Power Range: 10W – 100W
- » Mounting Depth: 4.8" (120mm)
- » Weight: 3.1 lbs (1.4kg) / Shipping Weight: 4.6 lbs (2.1kg)



C363

- » 6-1/2" Micro-Ceramic Composite (MCC) Cone, Cast-Polymer Frame Woofer
- » 1" Aluminum-Dome Swiveling Tweeter with Waveguide
- » Sensitivity: 87dB @ 2.83V, 1m
- » Recommended Amplifier Power Range: 10W – 120W
- » Mounting Depth: 4.8" (12.2cm)
- » Weight: 1.6 lbs (0.8kg) / Shipping Weight: 2.4 lbs (1.1kg)



C563

- » 6-1/2" Micro-Ceramic Composite (MCC) Cone, Cast-Aluminum Frame Woofer
- » 1" Aluminum-Dome Swiveling Tweeter with Waveguide
- » 3-Position HF Level Control
- » Sensitivity: 88dB @ 2.83V, 1m
- » Recommended Amplifier Power Range: 10W – 130W
- » Mounting Depth: 4.9" (12.5cm)
- » Weight: 2 lbs (0.9kg) / Shipping Weight: 2.7 lbs (1.2kg)



C763

- » 6-1/2" Micro-Ceramic Composite (MCC) Cone, Cast-Aluminum Frame, High-Output Woofer
- » 1" Aluminum-Dome Low-Distortion, High-Output Tweeter with Waveguide
- » 3-Position HF Level Control
- » LF Boundary Gain Compensation
- » Sensitivity: 88dB @ 2.83V
- » Recommended Amplifier Power Range: 10W – 140W
- » Mounting Depth: 4.9" (12.5cm)
- » Weight: 2.4 lbs (1.1kg) / Shipping Weight: 3.2 lbs (1.5kg)

COMMON SPECIFICATIONS

- » Includes Both Round and Square Zero-Bezel Magnetic Grilles (C263 supplied with round grille only)
- » Round Grille Finished Dimension (D): 9.1" (23.1cm)
- » Square Grille Finished Dimensions (H x W): 9.1" x 9.1" (23.1cm x 23.1cm)
- » Cutout Dimensions (D): 8" (20.3cm)
- » C-2 Installation Mechanism
- » Compatible with Wall Material Thickness Range: 0.5" – 2.0" (1.3cm – 5cm)
- » Preconstruction Bracket and Fire-Rated Back-Box Accessories Available

6-1/2" DUAL TWEETER IN-CEILING LOUDSPEAKERS



C363DT

- » 6-1/2" Micro-Ceramic Composite (MCC) Cone, Cast-Polymer Frame Woofer
- » Two 1" Aluminum-Dome Tweeters with Waveguides
- » Sensitivity: 88dB @ 2.83V, 1m
- » Recommended Amplifier Power Range: 10W – 120W (per channel)
- » Mounting Depth: 4.8" (12.2cm)
- » Weight: 1.9 lbs (0.9kg) / Shipping Weight: 2.6 lbs (1.2kg)



C563DT

- » 6-1/2" Micro-Ceramic Composite (MCC) Cone, Cast-Aluminum Frame Woofer
- » Two 1" Aluminum-Dome Tweeters with Waveguides
- » 3-Position HF Level Control
- » Sensitivity: 88dB @ 2.83, 1m
- » Recommended Amplifier Power Range: 10W – 130W (per channel)
- » Mounting Depth: 4.9" (12.5cm)
- » Weight: 2.2 lbs (1kg) / Shipping Weight: 3 lbs (1.4kg)

COMMON SPECIFICATIONS

- » Includes Both Round and Square Zero-Bezel Magnetic Grilles
- » Round Grille Finished Dimension (D): 9.1" (23.1cm)
- » Square Grille Finished Dimensions (H x W): 9.1" x 9.1" (23.1cm x 23.1cm)
- » Cutout Dimensions (D): 8" (20.3cm)
- » C-2 Installation Mechanism
- » Compatible with Wall Material Thickness Range: 0.5" – 1.0" (1.3cm – 2.5cm)
- » Preconstruction Bracket and Fire-Rated Back-Box Accessories Available



8" IN-CEILING LOUDSPEAKERS



C283

- » 8" Aluminum Cone, Cast-Polymer Frame Woofer
- » 1" Aluminum-Dome Swiveling Tweeter with Waveguide
- » Sensitivity: 87dB @ 2.83V, 1m
- » Recommended Amplifier Power Range: 10W – 100W
- » Mounting Depth: 5" (130mm)
- » Weight: 3.9 lbs (1.8kg) / Shipping Weight: 5.9 lbs (2.71kg)



C383

- » 8" Micro-Ceramic Composite (MCC) Cone, Cast-Polymer Frame Woofer
- » 1" Aluminum-Dome Swiveling Tweeter with Waveguide
- » Sensitivity: 87dB @ 2.83V, 1m
- » Recommended Amplifier Power Range: 10W – 125W
- » Mounting Depth: 5.2" (13.2cm)
- » Weight: 2.1 lbs (1kg) / Shipping Weight: 3.1 lbs (1.4kg)



C583

- » 8" Micro-Ceramic Composite (MCC) Cone, Cast-Aluminum Frame Woofer
- » 1" Aluminum-Dome Swiveling Tweeter with Waveguide
- » 3-Position HF Level Control
- » Sensitivity: 88dB @ 2.83V, 1m
- » Recommended Amplifier Power Range: 10W – 135W
- » Mounting Depth: 5.2" (13.2cm)
- » Weight: 2.8 lbs (1.3kg) / Shipping Weight: 3.8 lbs (1.7kg)



C783

- » 8" Micro-Ceramic Composite (MCC) Cone, Cast-Aluminum Frame, High-Output Woofer
- » 1" Aluminum-Dome Low-Distortion, High-Output Tweeter with Waveguide
- » 3-Position HF Level Control
- » LF Boundary Gain Compensation
- » Sensitivity: 88dB @ 2.83V, 1m
- » Recommended Amplifier Power Range: 10W – 150W
- » Mounting Depth: 5.2" (13.2cm)
- » Weight: 3.1 lbs (1.4kg) / Shipping Weight: 4.1 lbs (1.9kg)

COMMON SPECIFICATIONS

- » Includes Both Round and Square Zero-Bezel Magnetic Grilles (C283 supplied with round grille only)
- » Round Grille Finished Dimension (D): 10.7" (27.2cm)
- » Square Grille Finished Dimensions (H x W): 10.7" x 10.7" (27.2cm x 27.2cm)
- » Cutout Dimensions (D): 9.6" (24.4cm)
- » C-2 Installation Mechanism
- » Compatible with Wall Material Thickness Range: 0.5" – 2.0" (1.3cm – 2.5cm)
- » Preconstruction Bracket and Fire-Rated Back-Box Accessories Available

SPECIALTY IN-CEILING LOUDSPEAKERS



C763L

- » 7.8" x 3.4" Micro-Ceramic Composite (MCC) Diaphragm Flat-Panel Woofer
- » Two 3.5" Micro-Ceramic Composite (MCC) Cone, Cast-Aluminum Frame, High-Output Midranges
- » 1" Aluminum High-Output Tweeter with Waveguide
- » 3-Position HF Level Control
- » LF Boundary Gain Compensation
- » Sensitivity: 86dB @ 2.83V, 1m
- » Recommended Amplifier Power Range: 10W – 200W
- » Mounting Depth: 5.7" (14.5cm)
- » Weight: 4 lbs (1.8kg) / Shipping Weight: 5.2 lbs (2.4kg)
- » Cutout Dimensions (D): 11.3" (28.7cm)
- » Includes Both Round and Square Zero-Bezel Magnetic Grilles
- » Round Grille Finished Dimension (D): 12.5" (31.8cm)
- » Square Grille Finished Dimensions (H x W): 12.5" x 12.5" (31.8 cm x 31.8cm)
- » Compatible with Wall Material Thickness Range: 0.5" – 1.0" (1.3cm – 2.5cm)
- » Preconstruction Bracket and Fire-Rated Back-Box Accessories Available



C540

- » 4" Micro-Ceramic Composite (MCC) Cone, Cast-Aluminum Frame Woofer
- » 1" Aluminum-Dome Swiveling Tweeter with Waveguide
- » 3-Position HF Level Control
- » Sensitivity: 85dB @ 2.83V, 1m
- » Recommended Amplifier Power Range: 10W – 80W
- » Mounting Depth: 3.3" (8.4cm)
- » Weight: 1.5 lbs (0.7kg) / Shipping Weight: 1.9 lbs (0.9kg)
- » Cutout Dimensions (D): 3.5" (8.9cm)
- » Includes Both Round and Square Zero-Bezel Magnetic Grilles
- » Round Grille Finished Dimension (D): 4.4" (11.2cm)
- » Square Grille Finished Dimensions (H x W): 4.4" x 4.4" (11.2cm x 11.2cm)
- » Roller Lock Tool-Free Installation Mechanism
- » Compatible with Wall Material Thickness Range: 0.5" – 0.9" (1.3cm – 2.3cm)
- » Preconstruction Bracket and Fire-Rated Back-Box Accessories Available

